

3. BATHROOM HARDWARE



12. ANCHOR FIXINGS



14. PIVOT DOOR HARDWARE



20. SLIDING DOOR SYSTEMS



30. FOLDING DOOR SYSTEMS



32. STACKING DOOR SYSTEMS

MFGS

MODERN FRAMELESS
GLASS SYSTEMS

PRODUCT BROCHURE

What's important to you when investing in frameless glass products?

Technical Advice ☒ Good Friendly Service ☒ Quality ☒ Affordable Price ☒



PRODUCTS HIGHLIGHTED IN BLUE ARE SUPPLIED BY MODERN FRAMELESS GLASS SYSTEMS

PRODUCTS HIGHLIGHTED IN RED ARE SUPPLIED BY MANUFACTURED FRAMELESS GLASS SYSTEMS

Since 2003 **MFGS** have designed and manufactured the highest quality stainless steel, brass and aluminium frameless glass fittings. From balustrades, to frameless sliding doors, to canopies. If you're designing your bathroom, living space or outside area, these unique innovations are practical and stylish. With many years of experience, offering **technical advice**, dedication to **good friendly service** and the highest **quality** products at an **affordable price**, there is only one name for all your frameless glass hardware needs, **Modern Frameless Glass Systems**. To offer a larger range of custom hardware with better leadtimes and more affordable pricing in 2015 we introduced **Manufactured Frameless Glass Systems** (S & L Manufacturing Pty Ltd). To compliment our hardware we now have **Ultraview Glass & Hardware** aiming to provide an ever increasing range of ultra clear glass panels and associated hardware.

Modern Frameless Glass Systems Pty Ltd

PO Box 3239, Kirrawee 2232
Unit 13 / 205-213 Port Hacking Road Miranda 2228
Mon to Fri - 8am to 4pm P: 02 9522 3983
customer.service@mfgs.com.au www.mfgs.com.au

S & L Manufacturing Pty Ltd trading as

Manufactured Frameless Glass Systems

Unit 11 / 26-32 Abel Street Jamisontown 2750
Mon to Fri - Please Call First P: 02 4708 2563
manufacturing@mfgs.com.au www.mfgs.com.au

* Hardware images shown in this brochure are not necessarily to scale and may only be a representation. For more detailed information on the products shown in this brochure please refer to our Technical Product Guide, available via the download section of our website.

BATHROOM HARDWARE



ELITE PIVOT & HINGES FOR 10MM GLASS

Available in Polished Chrome, Brushed Satin Chrome, Polished Gold & some in Matt Black



MFP1
(Heavyweight)



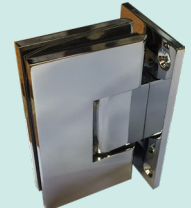
MF1



MF1L



MF1-L3



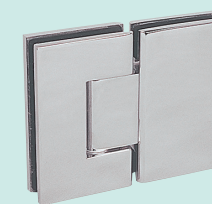
MF1-SH
(Heavyweight)



MF1-XL



MF1-90



MF2



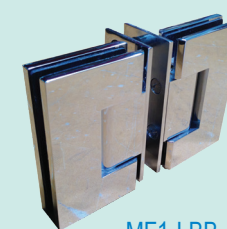
MF2-SH
(Heavyweight)



MF2-135



MF2-90



MF1-LBB



MF2-BF

SOME AVAILABLE IN CUSTOM ANGLES

MF2-125 TO 165 IN 5° INCREMENTS (POLISHED CHROME EXSTOCK)

PLEASE ENQUIRE AS TO WHETHER YOUR PREFERRED FINISH IS AVAILABLE

Consult with your Frameless Glass Shower Installer in the early stages of bathroom construction, as it is important that relevant trades understand the design requirements of a Frameless Glass Shower Screen. Including wall & floor levels, tap & shower head placement in relation to door position and whether to have a drop down into the shower area or a raised hob.

BEVEL EDGE HINGES FOR 10MM GLASS

Available in Polished Chrome, Brushed Satin Chrome & Polished Gold



BMF1



BMF1-L
BMF1-L3



BMF2



BMF2-135



BMF2-BF

SOME AVAILABLE IN CUSTOM ANGLES
PLEASE ENQUIRE AS TO WHETHER YOUR PREFERRED FINISH IS AVAILABLE

CREST HEAVYWEIGHT HINGES FOR 8/10MM GLASS

Available in Polished Chrome, Brushed Satin Chrome & Polished Gold



CH1



CH1L



CH2



CH2-90



CH2-135

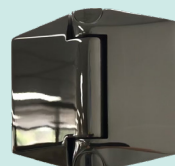


CHP1

PLEASE ENQUIRE AS TO WHETHER YOUR PREFERRED FINISH IS AVAILABLE

POLARIS SOFT CLOSE SHOWER HINGES FOR 10/12MM GLASS

Available in Polished Chrome,
Brushed Satin Chrome
& Matt Black



320SGG



320SGW



320WB



WHITE CS15 CHANNEL,
MK403 KNOB & CH2 HINGES

CS15 CHANNEL, GTRA250
HANDLE & MF2 HINGES



ELITE LIGHTWEIGHT HINGES FOR 6/8MM GLASS

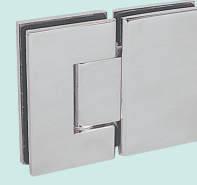
Available in Polished Chrome & some in Brushed Satin Chrome



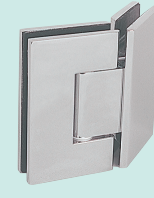
EL1



EL1-L3



EL2



EL2-135



EL2-BF

PLEASE ENQUIRE AS TO WHETHER YOUR PREFERRED FINISH IS AVAILABLE

CREST LIGHTWEIGHT HINGES FOR 6/8MM GLASS

Available in Polished Chrome, some in Brushed Satin Chrome & Polished Gold



CL1



CL1-L



CL2



CL2-135



CL2-BF

PLEASE ENQUIRE AS TO WHETHER YOUR PREFERRED FINISH IS AVAILABLE

PIVOT & SLIDING DOOR PRIVACY LATCHES FOR 6/8MM GLASS

Available in Polished Chrome, some in Brushed Satin Chrome & Brushed Nickel



MP65



MPL1



MPL2



MFPL1



CPL1



CPL1-H



CPL2 / CPL2-H

PLEASE ENQUIRE AS TO WHETHER YOUR PREFERRED FINISH IS AVAILABLE

MODERN SLIDING SHOWER COMPONENTS FOR 8/10MM GLASS

Available in Matt Black, Polished & Satin Stainless Steel Finish



ELITE & BEVEL EDGE BRACKETS FOR 10MM GLASS

Available in Polished Chrome, Brushed Satin Chrome, Polished Gold & some in Matt Black



BRACKETS AVAILABLE IN ROUND, SQUARE & BUTTON STYLES

SOME AVAILABLE WITH CUSTOM ANGLES

PLEASE ENQUIRE AS TO WHETHER YOUR PREFERRED FINISH IS AVAILABLE

F001 SLIDING SHOWER HARDWARE



MBR90 BKTS, DELTA HANDLE
& MF2-135 HINGES



SHOWER DOOR STOPS FOR 10MM GLASS

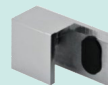
Available in Polished Chrome & Brushed Satin Chrome



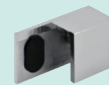
MB10DS



MBS10DS



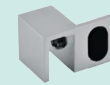
DSP-25-L



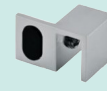
DSP-25-R



DSP-26



DSP-27-L



DSP-27-R

PLEASE ENQUIRE AS TO WHETHER YOUR PREFERRED FINISH IS AVAILABLE

CREST BRACKETS FOR 6/8/10MM GLASS

Available in Polished Chrome, Brushed Satin Chrome & Polished Gold



MBC90SF



MBC90-2



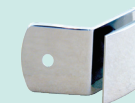
MBC90D



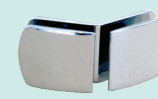
MBC180



MBC180D



MBC135

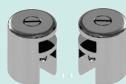


MBC135D

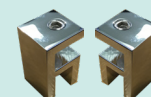
PLEASE ENQUIRE AS TO WHETHER YOUR PREFERRED FINISH IS AVAILABLE

OVERPANEL CLAMPS & ADJUSTABLE BRACING BARS

Available in Polished Chrome, Brushed Satin Chrome & Polished Gold



OPF1



OPF2-SQ



MGGB-135



MGGBS-135



MGWBS-90



MGWB240



MGWB-90

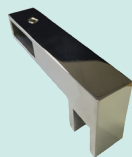
PLEASE ENQUIRE AS TO WHETHER YOUR PREFERRED FINISH IS AVAILABLE

CUT TO LENGTH HEADER TUBE WITH CONNECTORS

Available in Polished Stainless Steel



OF-WS-18



OF-WS-16



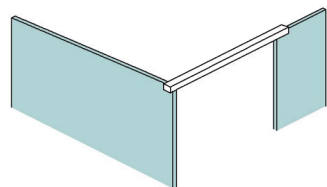
OF-WS-3010
(Header Tube)



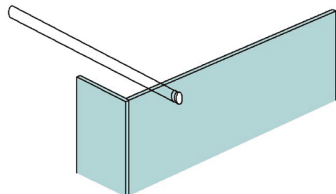
OF-WS-4

PLEASE ENQUIRE AS TO WHETHER YOUR PREFERRED FINISH IS AVAILABLE

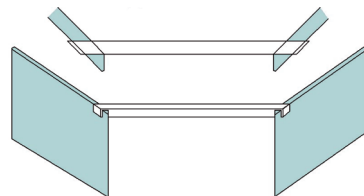
CUSTOM LENGTH BRACING BARS



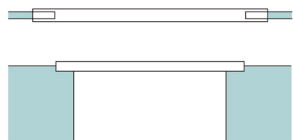
MCB1



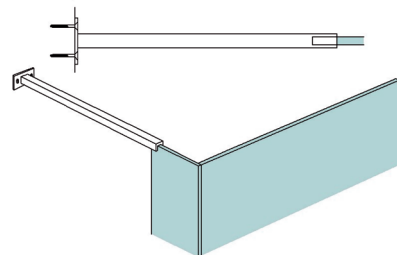
MCB2



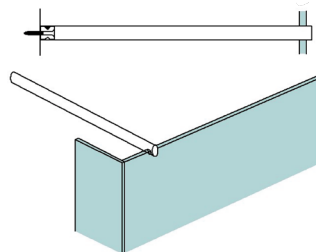
MCB3



MCB4



MCB5



MCB6

PLEASE ENQUIRE AS TO WHETHER YOUR PREFERRED FINISH IS AVAILABLE

FIXED & SWING BATH SCREEN WITH
MBR90 BKTS & MF2-BF BIFOLD HINGES

8



CS15 CHANNEL, MFS150 & MF2 HINGES



GLASS SHELVES

Available in Clear and some in Ultra Clear



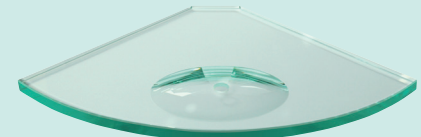
ANGLED
GSA200/250



RADIUS
GS150/200/250/300



GS-CRESCENT



SOAP DISH
GSS200/250



CURVED
GSC500/GSWAVE



GS-CIRCO



GSL500
GS-RECTO 300
GS-RECTO 600
GS-RECTO 900



TAPERED
GST500

SHOWER HANDLES

Available in Polished Chrome, some in Brushed Satin Chrome, Polished Gold, Polished Stainless Steel, Satin Stainless Steel & Matt Black



M150

MW30/37/43



M210/250/300
M400/450/500



MD250



MF150
GTR150/250



MFS150
GTFS150/250



TRK210/250/300/400/450/500



MTR210/250/300/400/450/500



GTRA250



CUBIX 25210



Curve210



Wave210



SDFP60



SDFP70

PLEASE ENQUIRE AS TO WHETHER YOUR PREFERRED FINISH IS AVAILABLE

MBR90 / MBR135D BKTS, MS500 HANDLE AND MF2-135 HINGES

10



CS15 CHANNEL, GTRA250 HANDLE & MF2 HINGES

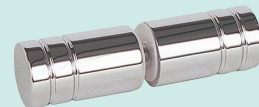


SHOWER KNOBS & PULLS

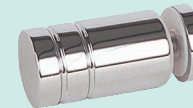
Available in Polished Chrome, Brushed Satin Chrome, Polished Gold & Matt Black



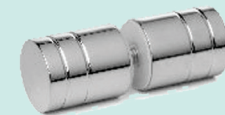
MK20



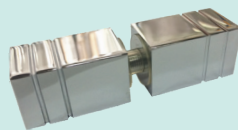
MK25



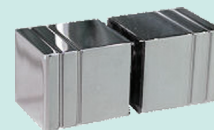
MK25B



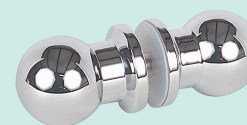
MH40



MKS25



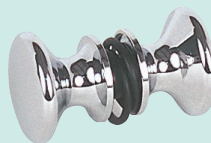
SK38



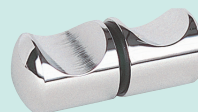
MK38



MK60



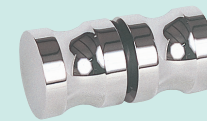
MK241



MK311



MK401



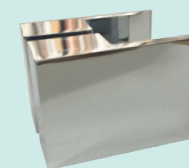
MK402



MK403



SK30



SK50



SH50

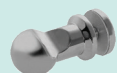
PLEASE ENQUIRE AS TO WHETHER YOUR PREFERRED FINISH IS AVAILABLE

ROBE HOOKS/TOILET ROLL HOLDERS/TOWEL RAILS

Available in Polished Chrome, some in Brushed Satin Chrome & Polished Gold



RH19-B
Also available with
Csk Fixing & for
Wall Mounting



RH1



EX-105



RE-105



TRH1



MTRH1



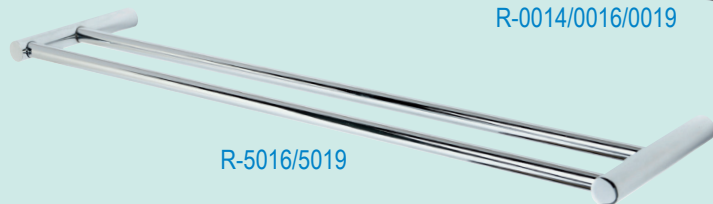
EX-1309



RE1309



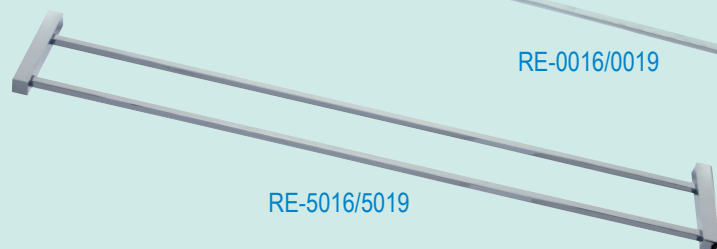
R-0014/0016/0019



R-5016/5019



RE-0016/0019



RE-5016/5019

PLEASE ENQUIRE AS TO WHETHER YOUR PREFERRED FINISH IS AVAILABLE

SLIDING SHOWER SCREEN WITH SDFP70 FINGER PULLS

12

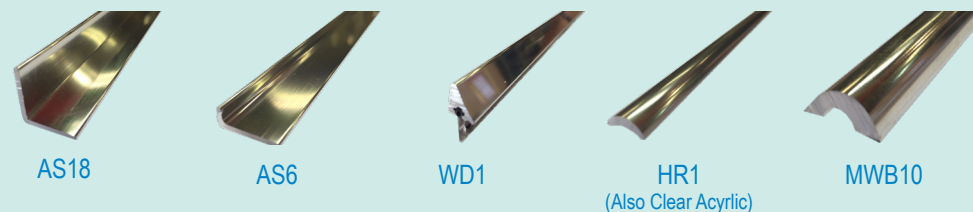




CS15 CHANNEL, MF150 HANDLE & MF2 HINGES

CHANNELS/WATERSEALS/WATERBARS

Available in Anodised Polished Silver, some in Natural, Polished Gold & Matt Black



WATERSEALS SHOWN ARE FOR 10MM GLASS, SOME ALSO AVAILABLE FOR 6 & 8MM GLASS

PLEASE ENQUIRE AS TO WHETHER YOUR PREFERRED FINISH IS AVAILABLE

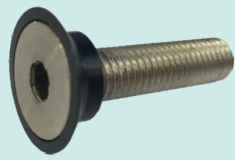
ANCHOR FIXINGS

Available in Satin or Polished Stainless Steel



CCB4 / M4CCB4
CCB6 / M6CCB6
CCB8 / M8CCB8
CCB10 / M10CCB10

Covered CSK Bushes
& Setscrews



UCB6 / M6UCB6
UCB8 / M8UCB8
UCB10 / M10UCB10
UCB12 / M12UCB12

Uncovered CSK Bushes
& Setscrews



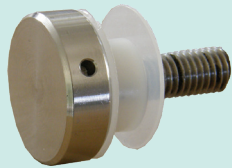
DB19 / 25 / 32 / 38 / 50 - X

Double Buttonhead
& Thread



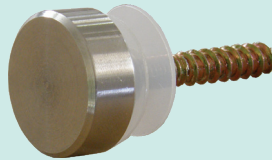
MB19S

19mm Buttonhead
with bush & Screw



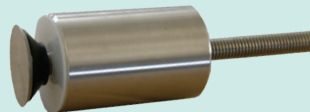
BT19 / 25 / 32 / 38 / 50 - Y

Buttonhead & Thread



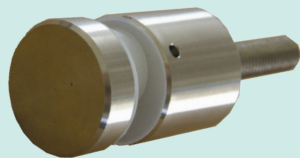
BL19 / 25 / 32 / 38 / 50 - Z

Buttonhead & Lagscrew



GSCC - 19 / 25 / 32 x 25 / 50

Covered CSK Anchors



GSBH - 19 / 25 / 32 x 25 / 50

Buttonhead Anchors



MACS19-50

19 - 50mm C Spanner



MACS38-50

38 - 50mm C Spanner

C-SPANNERS AVAILABLE FOR TIGHTENING BUTTON HEADS & BODIES

PLEASE ENQUIRE AS TO WHETHER YOUR PREFERRED FINISH IS AVAILABLE

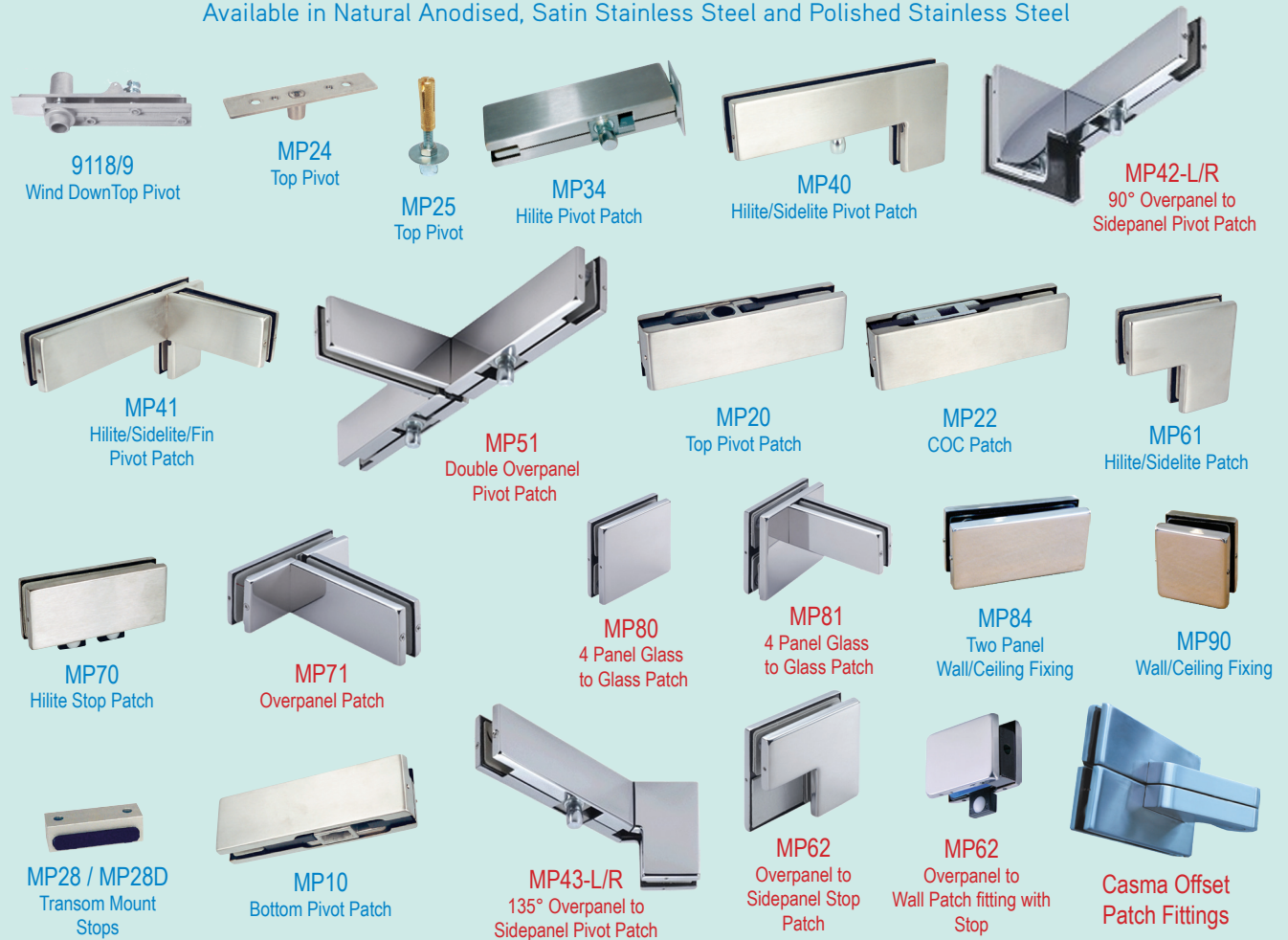


PIVOT DOORS



PATCH FITTINGS & ACCESSORIES

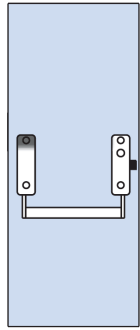
Available in Natural Anodised, Satin Stainless Steel and Polished Stainless Steel



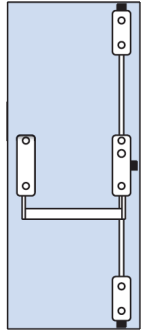
PLEASE ENQUIRE AS TO WHETHER YOUR PREFERRED FINISH IS AVAILABLE

Modern Frameless Glass Hardware is supplied for custom designed refurbishment and new developments. The seamless look of frameless glass will enhance any environment by adding extra light and a feeling of space. Generally pivot doors operate on floorsprings which provide controlled closing and a 90 degree hold open option. A variety of pivot hardware can be used from patch fittings, door rails, pivot poles, and spider pivots. All frameless glass assemblies should be manufactured from 10mm, 12mm or 15mm toughened safety glass.

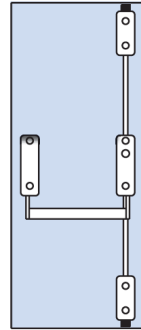
PANIC EXIT DEVICE SETS



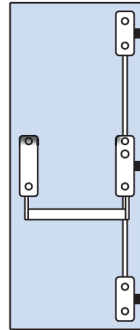
SPED1



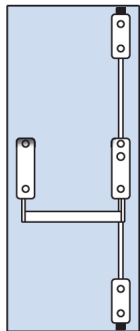
SPED2



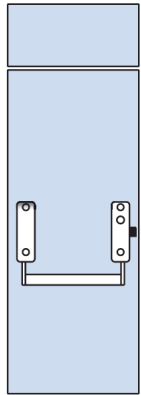
SPED3



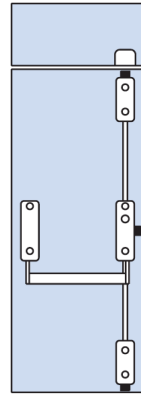
SPED4



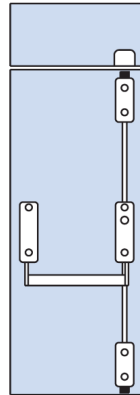
SPED5



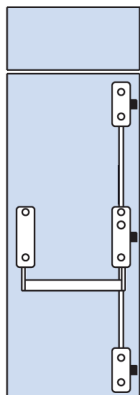
SPED6



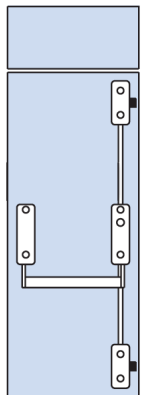
SPED7



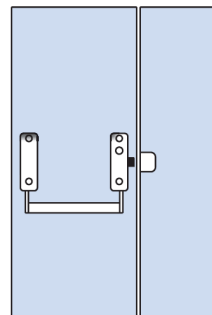
SPED8



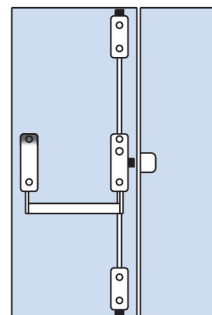
SPED9



SPED10

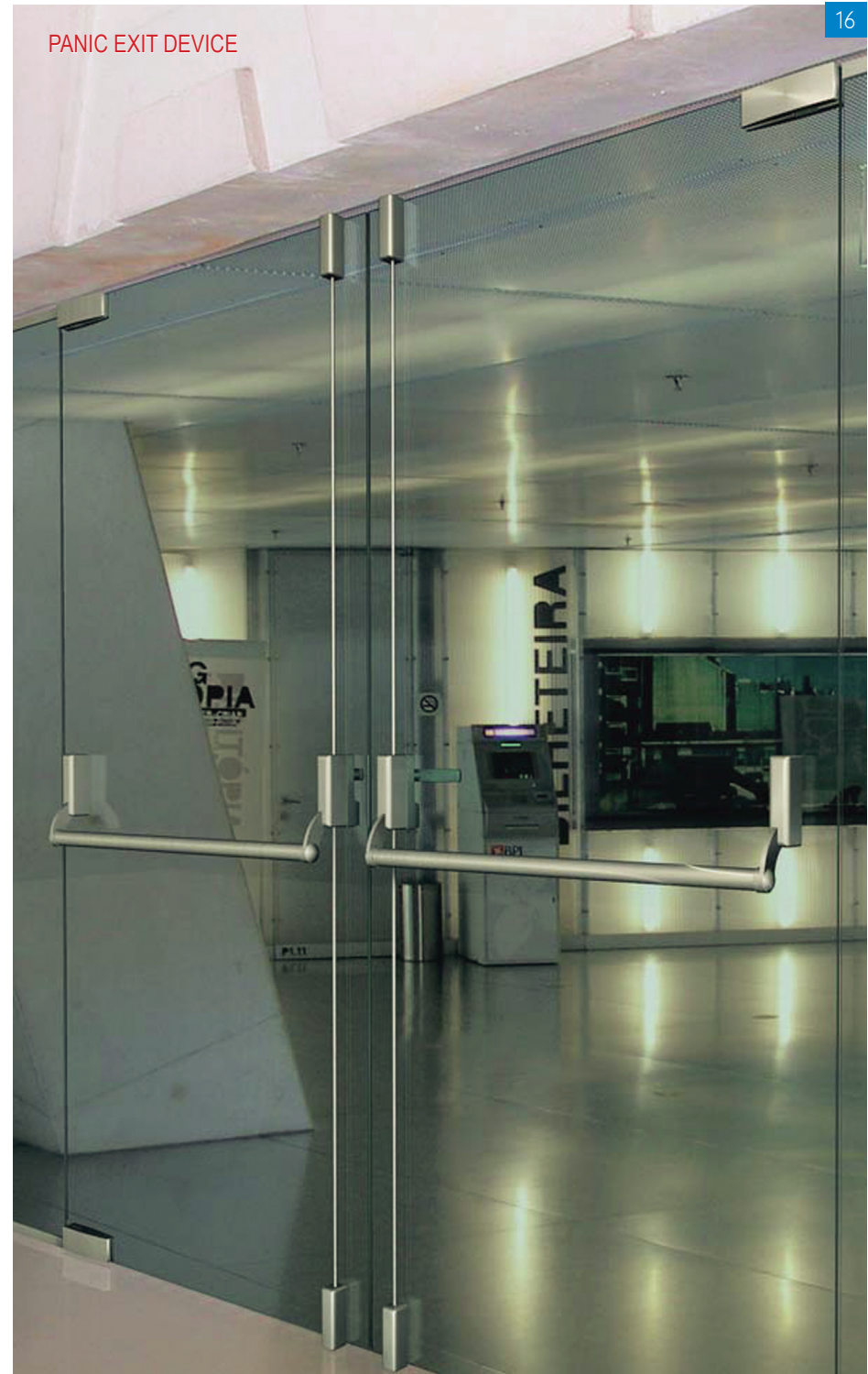


SPED11



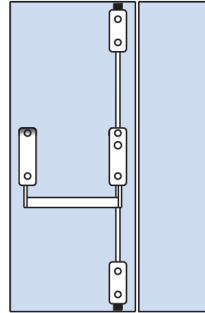
SPED12

PANIC EXIT DEVICE

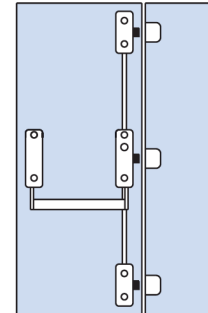


451 SPIDER PIVOTS, PATCH LOCKS,
MD600 HANDLE, CHANNEL & SPIDER

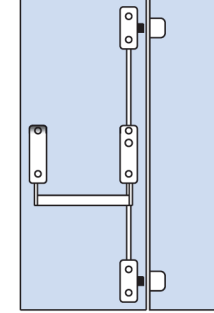
PANIC EXIT DEVICE SETS



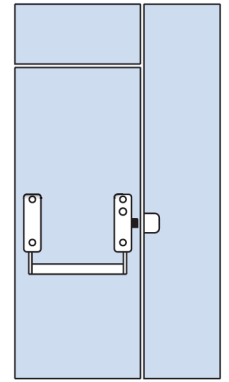
SPED13



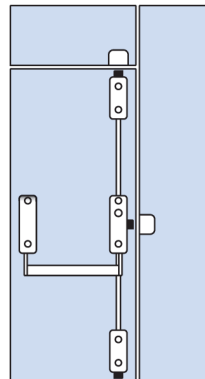
SPED14



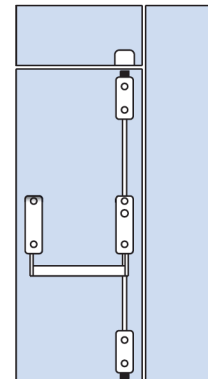
SPED15



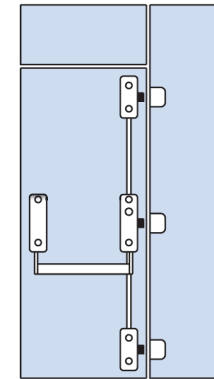
SPED16



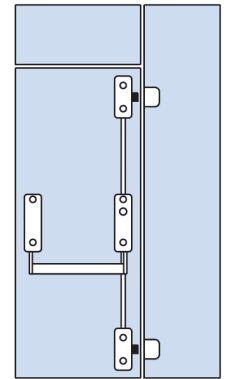
SPED17



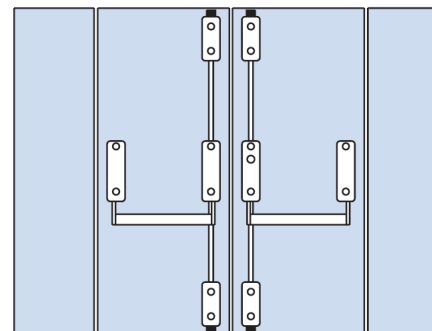
SPED18



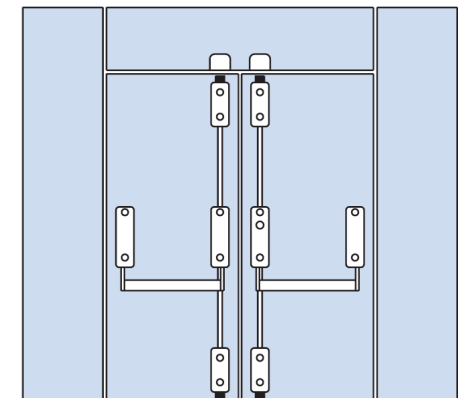
SPED19



SPED20



SPED21



SPED22

DOOR STRAPS, FLOOR PIVOTS & PACKERS



9123
Bottom Door Strap



MP26
Floor Bearing Pivot



MP26 P5 & P10
Packers

GLASS CONNECTORS



VB32CNRL

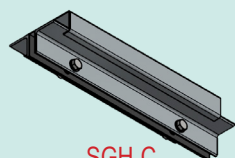


GX62.4

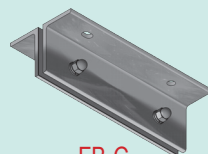


GX62.1

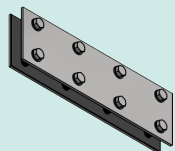
GLASS FIN HARDWARE



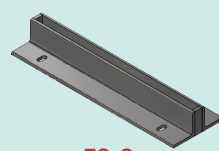
SGH-C



FB-C



SP-C



FS-C

PLEASE ENQUIRE AS TO WHETHER YOUR PREFERRED FINISH IS AVAILABLE



TOP PATCH, LOCKING BOTTOM DOOR RAIL,
PATCH LOCK / KEEPER, CS25 / 40 CHANNEL,
FLOORSRING & MB450 HANDLE



DOOR STOPS



MP32-1



MP32-2



MP32-2S



MP32-3



MP32-4



MP32-5

PIVOT POLES



MPP25



MPP34



MPP40



MPP60



MPP10



MPP20

AUSTVISION SPIDER FITTINGS



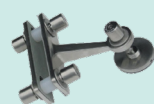
451
Bottom Pivot Spider



452
Top Pivot Spider



444/2
Light Weight Spider



444/2/1
Light Weight Spider



444/4
Light Weight Spider
4 Way



444/4/2
Light Weight Spider
4 Way 1 Side



445/4M
Heavy Duty Spider
4 Way



445/4M/2
Heavy Duty Spider
2 Way 1 Side



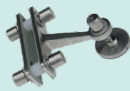
445/4M/2Y
Heavy Duty Spider
2 Way



445/4M/1Y
Heavy Duty Spider
2 Way 1 Side



445/2M
Heavy Duty Spider
2 Way



445/2M/1
Heavy Duty Spider
2 Way 1 Side



443/4
Light Weight Spider
4 Way



443/2
Light Weight Spider
2 Way



443/4/2
Light Weight Spider
4 Way 2 Arm



443/2/1
Light Weight Spider
1 Way



446/4M
Heavy Duty Spider
4 Way



446/4M/2
Heavy Duty Spider
2 Way



446/2M
Heavy Duty Spider
2 Way



446/4M/3
Heavy Duty Spider
3 Way



446/2M/1
Heavy Duty Spider
1 Way



446/4M/90
Heavy Duty Spider
4 Way 90°



446/2M/90
Heavy Duty Spider
2 Way 90°



DOUBLE PIVOT DOORS WITH PATCH FITTINGS / LOCKS,
FIN ROOT BKTS, 445/4 SPIDERS, MD600 HANDLES & CS25 / 40 CHANNEL



DOOR RAILS, MD600 HANDLES & FLOOR SPRINGS

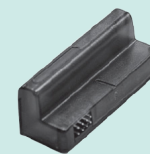
YALE DIGITAL SMART TOUCH LOCKSET



YDG313L
Smart Touch Lockset



YDG313K
Smart Touch Glass Keeper



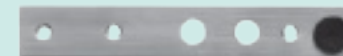
RCM100
Remote Access Receiver Module



WRC100
Wall Mountable Remote



PRC100
Key Fob Remote



ATS100
Aluminium/Timber Strike Plate

GFS ELOCK TO SUIT 8-10MM GLASS



E06E01810 / E06E11810
GFS E-Lock



E06E21810
Glass Keeper

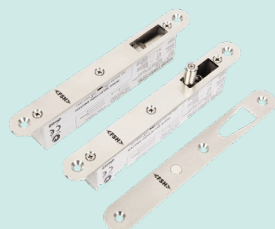


E06E31810
Wall Keeper

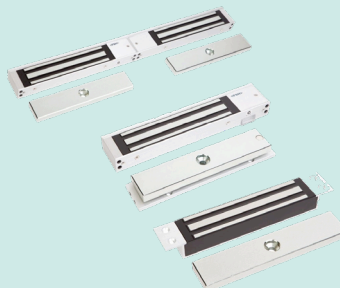
ELECTRIC DROP BOLTS, MAG LOCKS, STRIKES & LATCHES



FEM2600
Dropbolt



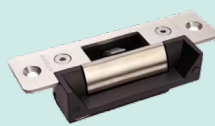
VES1260
Vlock



FEM2600 / FEM2600D
Vlock



FEM2618
Ubracket for glass mounting
Mag Lock



FES1000
Electric Strike
(Weather Resistant)



FES2000
High Security
Electric Strike



EDH2005
Glass Door Latch

SLIDE-ON & STANDARD PATCH BOLTS / LOCKS



143006
Slide on
GFS Bolt



374
Slide on
Patch Bolt



GFS023018
GFS Bolt with
Pull & Keeper
Plate



GFS023028
Glass Keeper
for GFS Bolt
with Pull



MP700N
Slide-On Patch Lock



MP700
Patch Lock



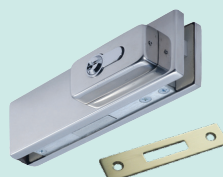
456
Profile Plunger
Lock



MP100P
Bottom Corner
Pin Patch Lock



MK240P
Keeper Plate for
MP100P, MP700N
& MP700



MP100
Bottom Corner Tongue
Patch Lock



MP200
Centre Patch Lock



MP220
Glass Keeper



MK240
Keeper Plate for
MP100 & MP200

PLEASE ENQUIRE AS TO WHETHER YOUR PREFERRED FINISH IS AVAILABLE

LOCKING DOOR RAILS,
PATCH FITTINGS & FINELINE HANDLES



MODERN PATCH LOCKS (SECURITY, LEVER, LATCH, ETC.)

Available in Natural Anodised, Satin Stainless Steel and Polished Stainless Steel



MP300L
Inside Locked & Outside
Opened Angle View



MP300/320
Bottom/Centre Patch/
Lock Keeper



MK590
MP300 Door Rail
Floor Keeper



MP3582A
Inside & Outside
Angle View



MP3582B
Inside & Outside
Angle View



MP3582C
Inside & Outside
Angle View



MP3582D
Inside & Outside
Angle View



MP3582E
Inside & Outside
Angle View



MP3582K
Side Angle
View



Lever Locks

Some lever & patch
locks are available
in several variations
& finishes



**Lever Lock
Glass Keepers**



PCL-C



PCL-NC



PCL-GK



PCL-WK



PCL-HS

PLEASE ENQUIRE AS TO WHETHER YOUR PREFERRED FINISH IS AVAILABLE



OFFSET TOP & BOTTOM PATCH FITTINGS



DOOR RAILS, FLOORSPRINGS, SPINDLES, HINGES, ETC.



Modern Floor Springs
100kg Capacity



MFX5, 10, 15, etc.



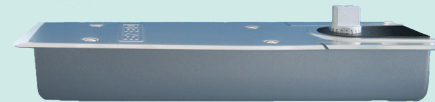
GES5, 8, etc.



MAFG



GCC & METRO
DOOR RAILS



GEZE TS500NV
150kg Capacity



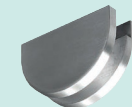
GCC GTS-750VHO / NHO
150kg Capacity



GEZE TS550NV
300kg Capacity



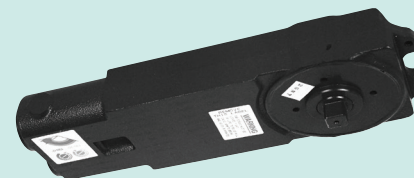
GFS E08C037



GFS E08C027



GFS E08C017



Modern COC's
100kg Capacity



FH-100
Ozone Hydraulic
Patch Fitting & Packers



GFS E08R007
90kg Capacity



SH073
Biloba
Glass to Glass
Hydraulic Hinge



SH074
Biloba
Glass to Wall
Hydraulic Hinge



SH075
Biloba
Glass to Wall
Hydraulic Hinge



220IGG
Polaris
Glass to Glass
Hinge



220IGW
Polaris
Glass to Wall
Hinge



220IGJ
Polaris
Glass to Door
Jamb Hinge

PULL HANDLES

Available in Satin Stainless Steel, Polished Stainless Steel & some in Matt Black



MD300/305/450/500/600



MO300/305/450



MCS300



MCR305



MRD300/450/600
RA450/600



MB450/600



MF450/600/900/1200



MFS600, SQ25-600,
SQ600/1000



MFC450/600



MSD450/600



CUBIX 50210



DH90



PH32550AH



A450/500/750



E07M088



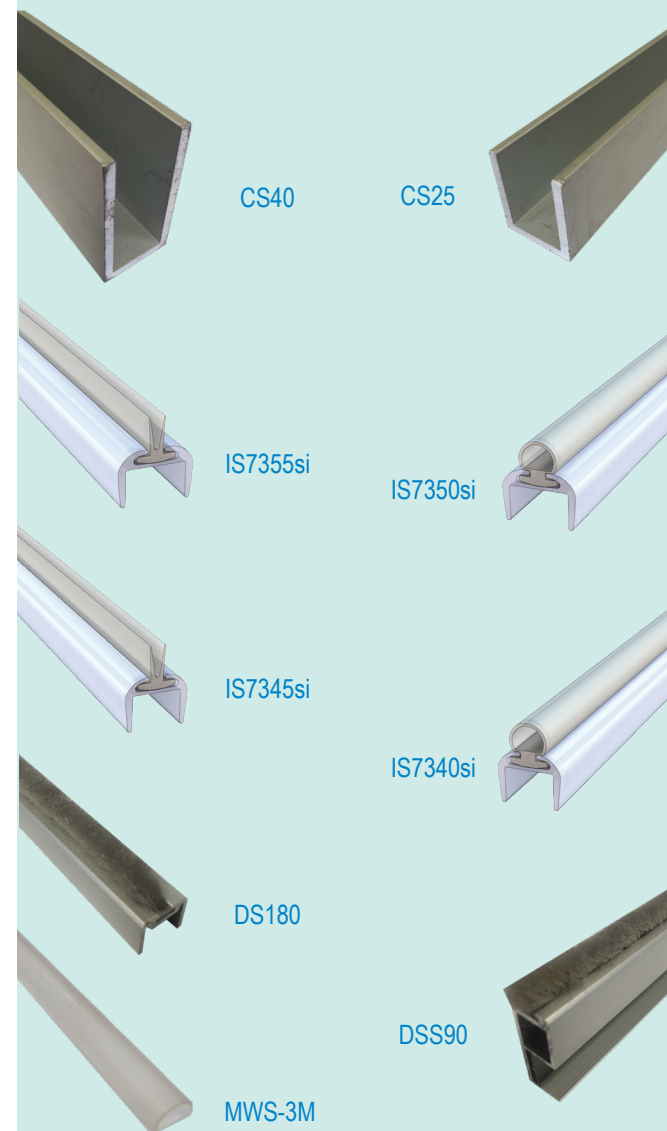
M750/1250/1750
Icon Handle

PLEASE ENQUIRE AS TO WHETHER YOUR PREFERRED FINISH IS AVAILABLE



DOUBLE PIVOT DOORS WITH PATCH FITTINGS / LOCKS,
SQUARE FINELINE HANDLES & CS25 / 40 CHANNEL

CHANNEL SECTIONS & SEALS



PLEASE ENQUIRE AS TO WHETHER YOUR
PREFERRED FINISH IS AVAILABLE

DOUBLE PIVOT DOORS WITH PATCH FITTINGS / LOCKS, D HANDLES,
CS25 / 40 CHANNEL, SPIDER FITTINGS & FIN ROOT BRACKETS

FRAMELESS GLASS SLIDING DOORS

From Geze Levolan 60 to Metro MF250 we have a sliding door system to suit almost any requirement. These can take weight ranging from 60kg to 250kg.

Geze Levolan 60

60kg Capacity in 2450mm Kits & Custom Lengths
Available with Softstop Rated to 60kg
Wall, Ceiling or Glass Mounted



SLIDING DOOR LOCKS, FINGER / FLUSH PULLS

Possibly available in Natural Anodised, Mill, Satin Stainless Steel,
Satin Stainless Similar, Polished Stainless Steel & Chrome



MP300-H/320-H
Sliding Door Lock / Keeper



MK590-H
Wall Mount
Strike Box



FP150
Sliding Door
Flush Pull



MP200-H/220-H
Sliding Door Lock / Keeper
(wall mount keeper available)



E07N037 / E07N047
Left or Right Hand
GFS T-Lock
Cavity Installation



SDFP60
Finger Pull
with blanking disc



SDFP70
Finger Pull



E07M027
GFS Sliding Door
Flush Pull



E07N047
GFS Wall
Keeper T-Lock

PLEASE ENQUIRE AS TO WHETHER YOUR
PREFERRED FINISH IS AVAILABLE



Geze Levolan 60

60kg Capacity in 2450mm Kits & Custom Lengths
Available with Softstop Rated to 60kg
Wall, Ceiling or Glass Mounted



Brisa-160
60kg Capacity in 2400mm Kits
Supplied with Softstop Rated to 60kg
Wall or Ceiling Mounted



Brisa-160
60kg Capacity in 2400mm Kits
Supplied with Softstop Rated to 60kg
Wall or Ceiling Mounted



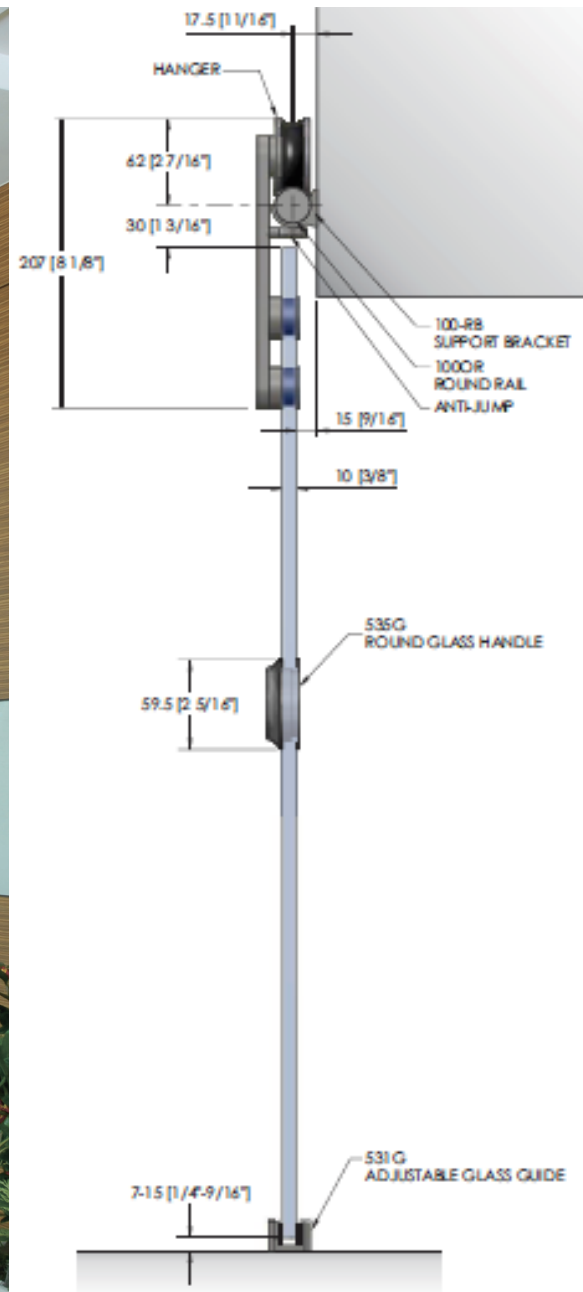
Cutaway showing Track & Clamp



Track & Roller Carriage



GEZE ROLLAN 80
 80KG CAPACITY IN 1900MM KITS & CUSTOM LENGTHS
 AVAILABLE WITH SOFTSTOP RATED TO 40KG
 WALL & CEILING MOUNTED



531G
 ADJUSTABLE GLASS GUIDE
 SUITABLE FOR 8 [5/16"],
 10 [3/8"] AND 12 [1/2"] GLASS

BRIO OPEN RAIL GLASS

100KG CAPACITY IN CUSTOM LENGTHS
 WALL MOUNTED
 AVAILABLE IN BRUSHED SATIN STAINLESS
 & PVD BLACK FINISH



GEZE LEVOLAN 120/150

120/150KG CAPACITY IN 2850MM/2450MM KITS & CUSTOM LENGTHS
AVAILABLE IN NATURAL ANODISED & SATIN STAINLESS ANODISED



VALENCIA

120KG CAPACITY IN 2000MM KITS
INCLUDES SOFT STOPS
AVAILABLE IN
SATIN STAINLESS ANODISED



VALENCIA
CLAMP
&
TRACK

CONTINUOUS CLAMP COVER



GGS HANGER

PERLAN 140 AUTO
WITH COVER REMOVED



HIDDEN WALL MOUNT



GEZE PERLAN 140

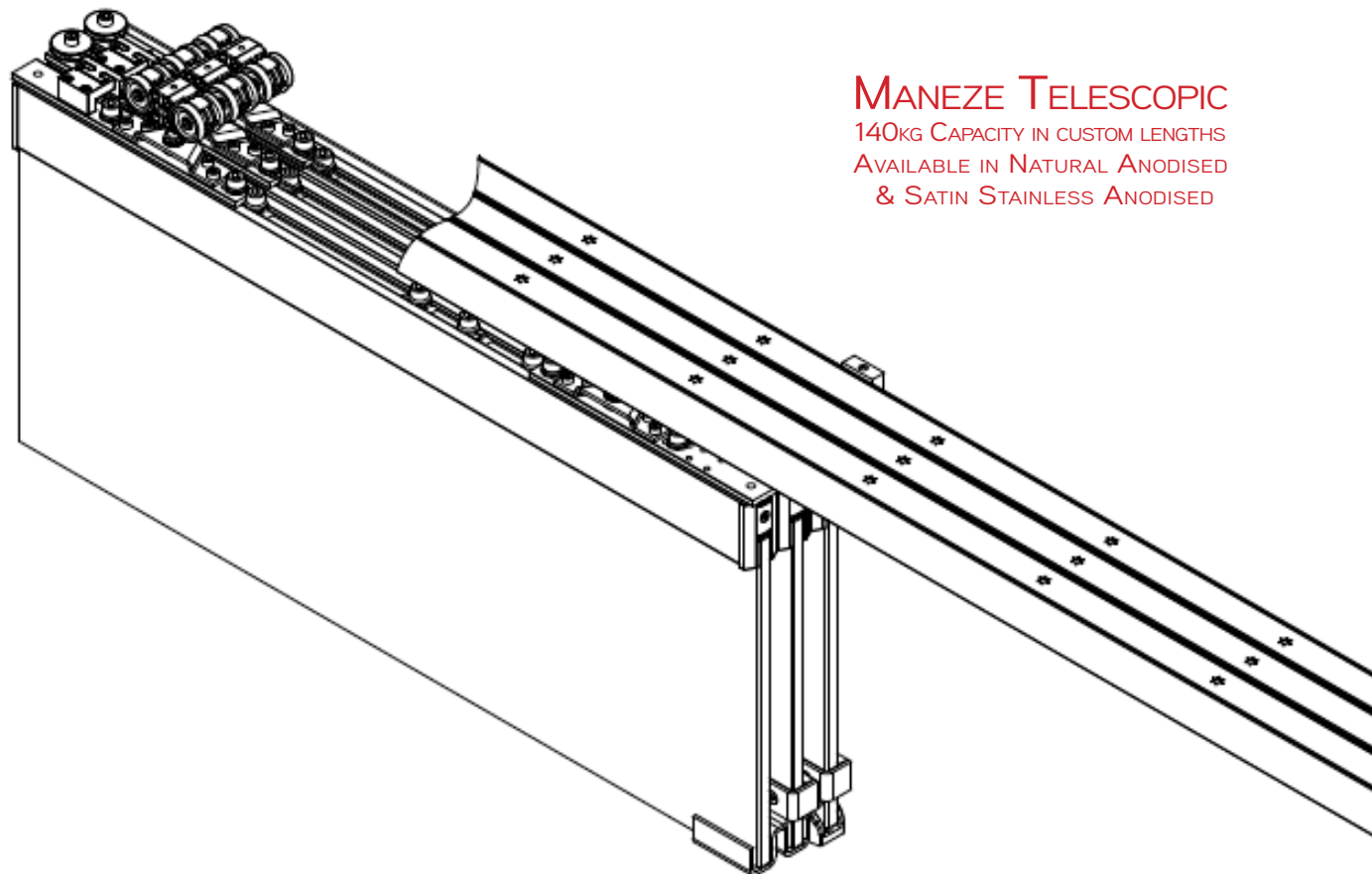
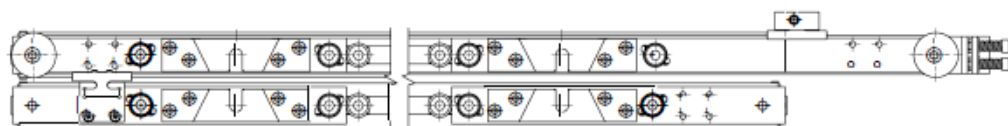
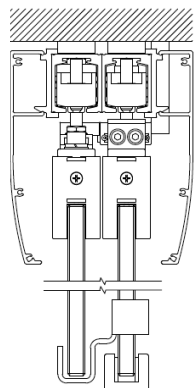
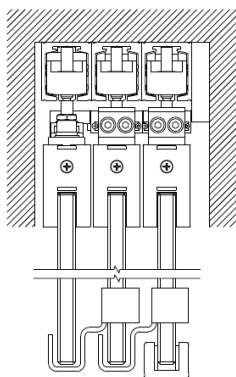
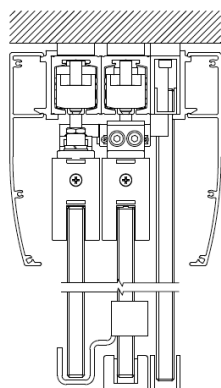
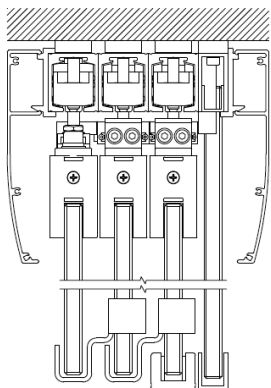
140KG CAPACITY IN 2450MM KIT

& CUSTOM LENGTHS

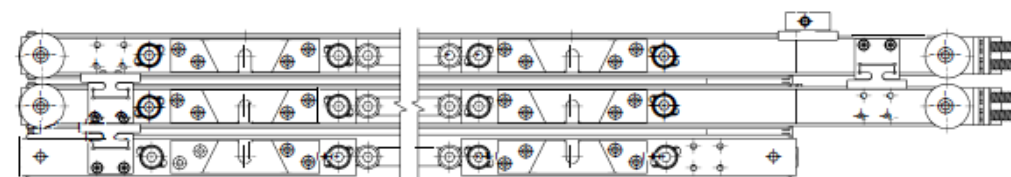
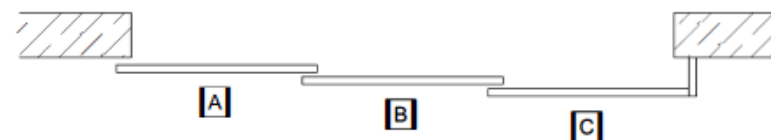
SOFTSTOP RATED TO 80KG

AVAILABLE IN NATURAL ANODISED

& SATIN STAINLESS ANODISED



MANEZE TELESCOPIC
 140KG CAPACITY IN CUSTOM LENGTHS
 AVAILABLE IN NATURAL ANODISED
 & SATIN STAINLESS ANODISED







**METRO
GLASSGLIDE**
150kg CAPACITY IN
2000/3000/5000MM KITS
& CUSTOM LENGTHS
WALL & CEILING MOUNTED
AVAILABLE IN NATURAL ANODISED FINISH



**METRO
LINEAR 100**
170kg CAPACITY IN
2000/3000/4000MM KITS





METRO MF100/180/250 SLIDING DOORS
250KG CAPACITY IN 2000/3000/4000MM KITS
& CUSTOM LENGTHS IN NATURAL ANODISED FINISH

38



METRO MF75 INTERNAL FOLDING DOORS

SEE THE 3D ANIMATION ON OUR WEBSITE



*An effective
room divider*



FRAMELESS GLASS FOLDING/STACKING DOORS

With the fully frameless effect the Metro MF75 Folding Door System is not only an effective room divider, it is also a stunning design feature when used with different styles of glass. It is very versatile, being able to fold doors from two panels to six panels in one direction. Available below is the Austvision Folding Door System suitable for 10, 12 & 15mm toughened glass with Covers in 25 Micron Natural Anodised, 316 Stainless Steel or Powder Coated. The GCC Folding Door System on the following page is suitable for 10 & 12mm toughened glass and available standard in a Natural Anodised Finish, other finishes available on request.



GGG Hangers



GEZE MSW STACKING DOORS
WITH INTEGRATED PIVOT DOOR



AUSTVISION FSR & FSS

STACKING DOORS
AVAILABLE WITH RAILS OR SPIDERS



FRAMELESS GLASS CANOPIES

Frameless glass canopies can be achieved using a variety of support systems ranging from stainless steel rod systems with profiled stainless steel glass fittings to spider fitting canopies to standard disc anchor systems. All systems can be designed for commercial or residential applications.





FRAMELESS GLASS FIN, FACADE & TRUSS SYSTEMS



FRAMELESS GLASS BALUSTRADE AND POOL FENCING

Our various balustrade and pool fence systems will showcase exceptional views and extraordinary landscaping. Please enquire with your glazier regarding the best system to suit your requirements.



CBS250 / CBS250F
CONCEPT CORE DRILLED
ROUND SPIGOTS

BALUSTRADE & POOL FENCE SPIGOTS

Available in Satin Stainless Steel
& Polished Stainless Steel



MRS175SMF



MSS175SMF



HSS177SMF



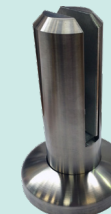
MRS275F



MSS275F



HSS245F



CBS160SMF
CBS250F



CBS250
CBS250F



METRO NAUTECH STRUT POST

Most unobtrusive due to their slim profile of 160mm H by 16mm W.

Spaced at 700mm to 1000mm centres depending on application.

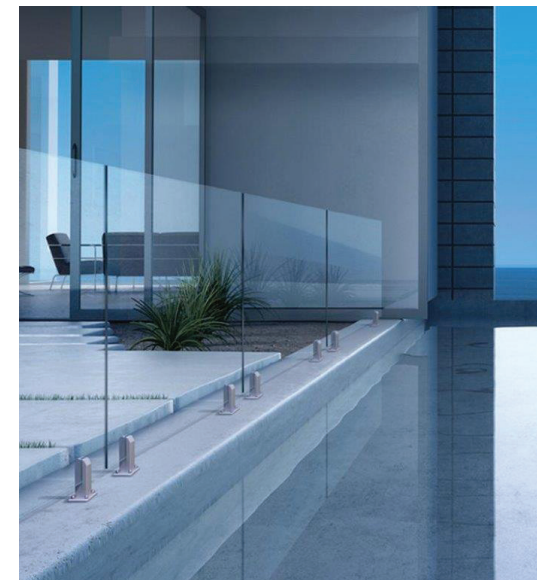
Simple installation—no holes required in the glass.

Allows both horizontal and vertical adjustment.

Available in side fixed and base fixed options.

Tested to AS/NZS1170
Occupancy A.





METRO PL200 & PL400 ALUMINIUM STRUT POSTS

Compliant to AS1170 for balustrades & pool fences. Adjustable for glass alignment & concealed fixings. Special Powder Coat Colours on Request. No Hole in Glass, Friction Fit



PL200

Silver Frost
Powder Coating
Standard



PL400

AZC

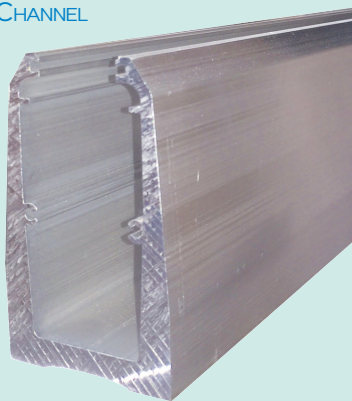
ALUMINIUM BALUSTRADE CHANNEL

No glass preparation required other than height deduction for channel base, setting block and handrail.

Designed for use with 10mm, 12mm or 15mm Toughened Glass and installed with Non Shrink Grout.

Timber, concrete or steel installation

Non toehold with optional end caps & gaskets.



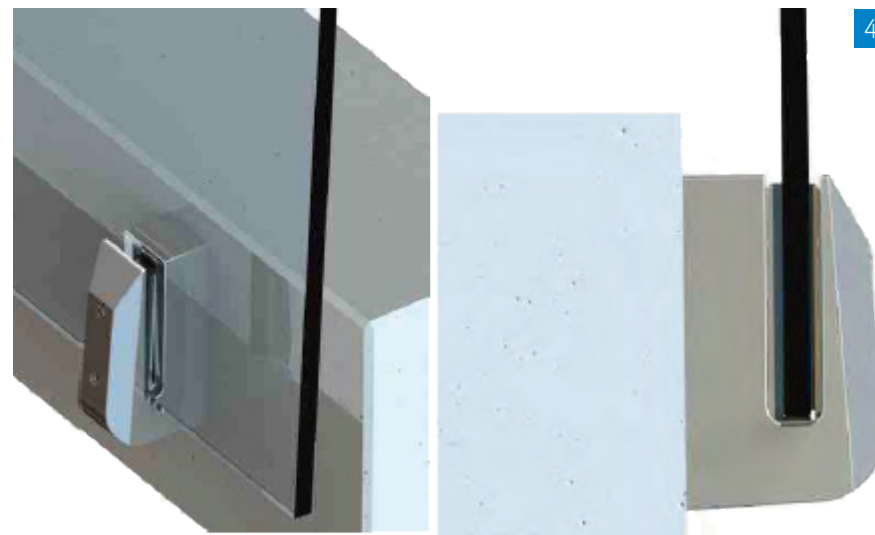
MSF150

MODERN SIDE FIX SPIGOTS

Friction Fit & Suitable for 12-17.52mm toughened glass including Ultraview Pool Fence Panels.

Adjustable for alignment, simply tilt and lock the glass in position.

2205 Duplex Stainless Steel in Polished & Satin Finishes.



BA124

INFINITY SIDE FIX GLASS BALUSTRADE SYSTEM

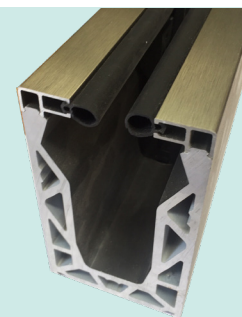




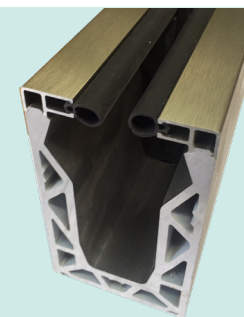
The Posiglaze Frameless Glass Balustrade System was developed for cantilevered structural balustrades to cope with the transition from monolithic toughened safety glass (TSG) to toughened laminated safety glass (TLSG).

The unique design uses a special high strength hollow core aluminium extrusion and special glass clamp kits that clamp the glass and locate into the section. This means the system can be used on 12, 15 & 19mm TSG and 13.5, 17.5 and 21.5mm LTSG without holes in the glass. Holes can make the systems more complex and often the holes are the point of failure.

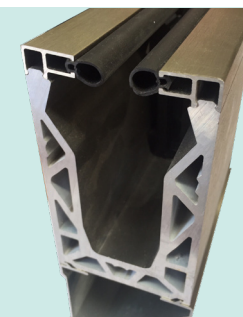
The other key to Posiglaze is its clever locating and adjusting technique which allows the installers to adjust the glass panels once in place, with a turn of a spanner, saving on installation time.



PG120B



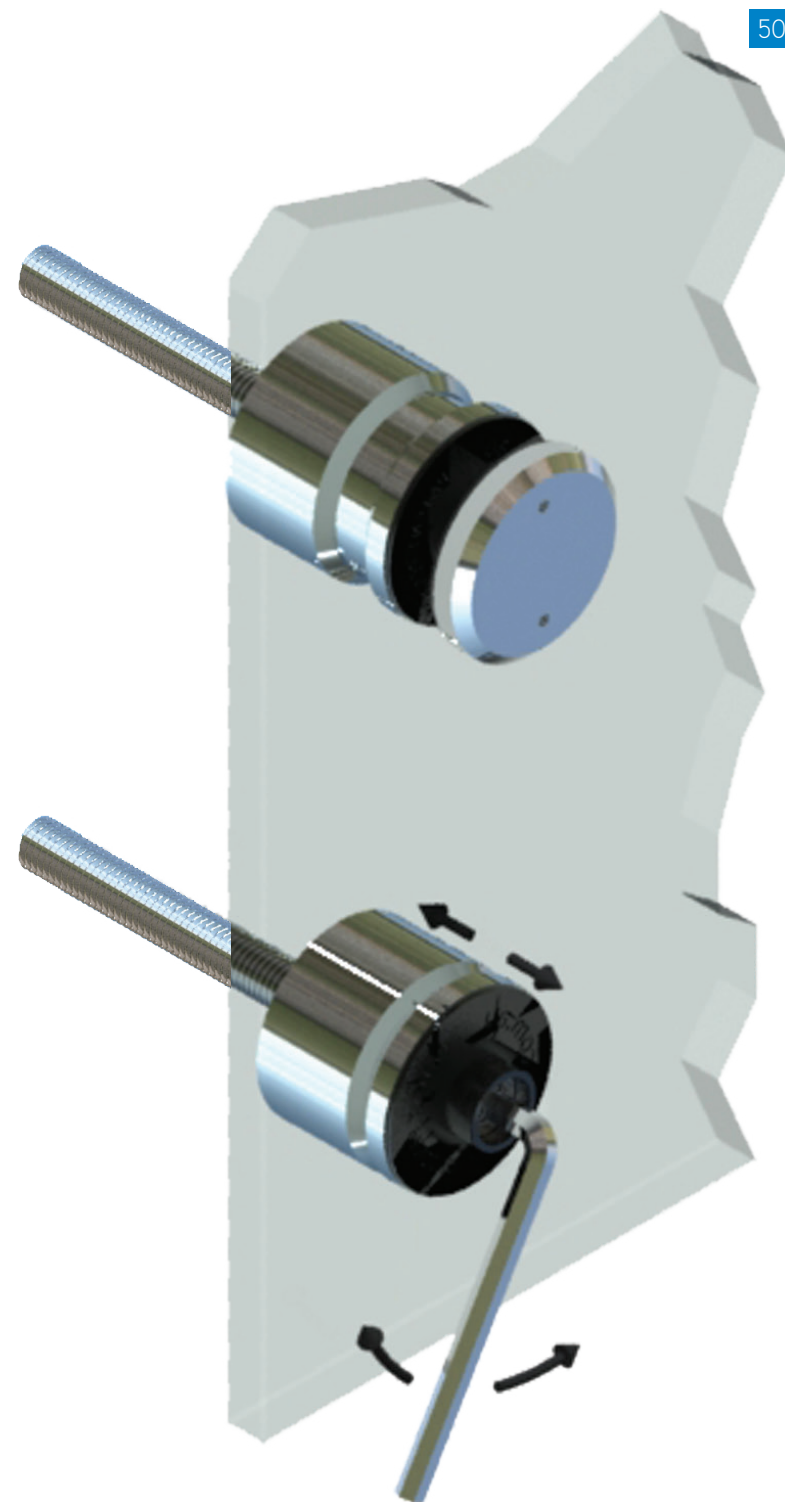
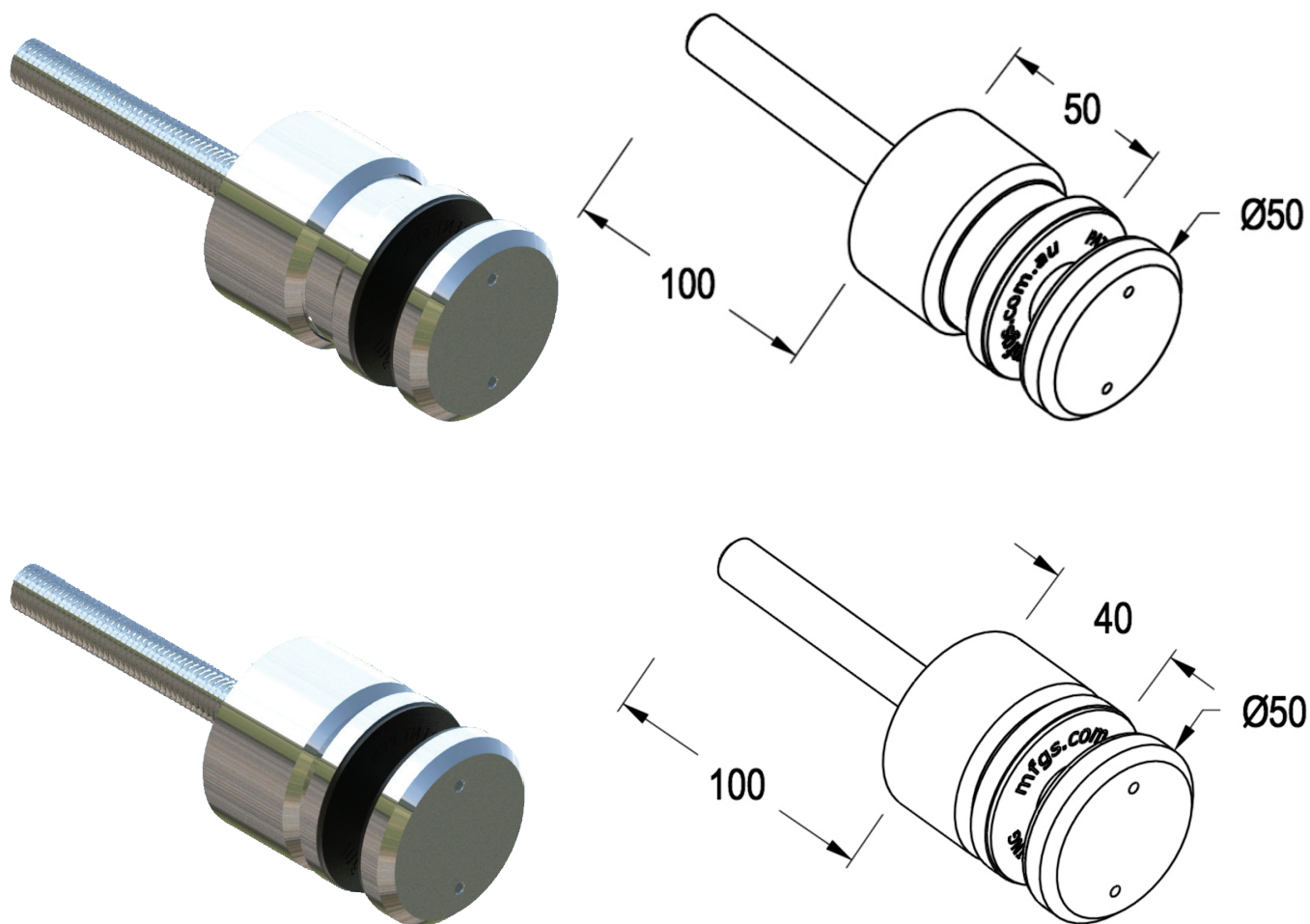
PG120S



PG180S

MB50x40-50

MODERN ADJUSTABLE GLASS ANCHORS



- Adjustable with Allen Key before/after installation of glass panels
- Passed AS/NZS1170 Testing Loads due to a 20mm Diameter glass hole preparation & 50mm Diameter Mounting Body/Cap
- Telescopic Body hides the thread for a seamless appearance
- See separate brochure for more Innovative & Superior Features

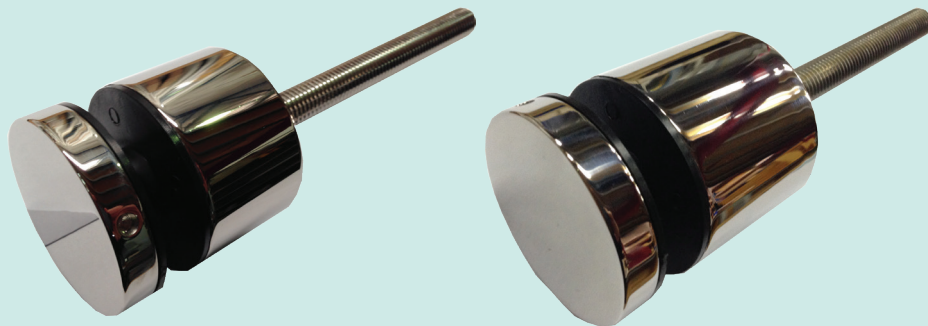
MGA-50 & MGA-38

MODERN FIXED LENGTH GLASS ANCHORS



MGA-50x10

MGA-50x20



MGA-50x30

MGA-50x40



MGA-50x50

M12 Lagscrews





MB50/75 ANCHORS AND SQUARE COVERS

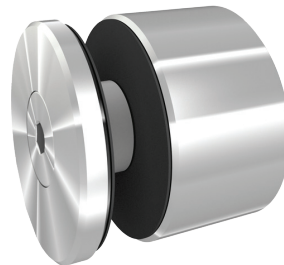
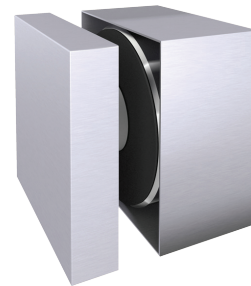
This is a proprietary system using 50/75mm diameter 316SSS anchors.

The standard anchors have a 30mm long body which helps with water drainage and cleaning. Anchor fixed balustrades are suitable for external decks and stairs as well as internal landings and stairs.

They can be fixed directly to concrete, timber and steel and fixing details are available on request for each structure type.

The disc fittings are generally positioned at 300-400mm centres horizontally in a single line for the MB75 and 100mm vertically apart for the MB50.

Producer Statements can be provided.





MB75 ANCHORS
WITH SQUARE COVERS



MB75 ANCHORS



MB75 ANCHORS



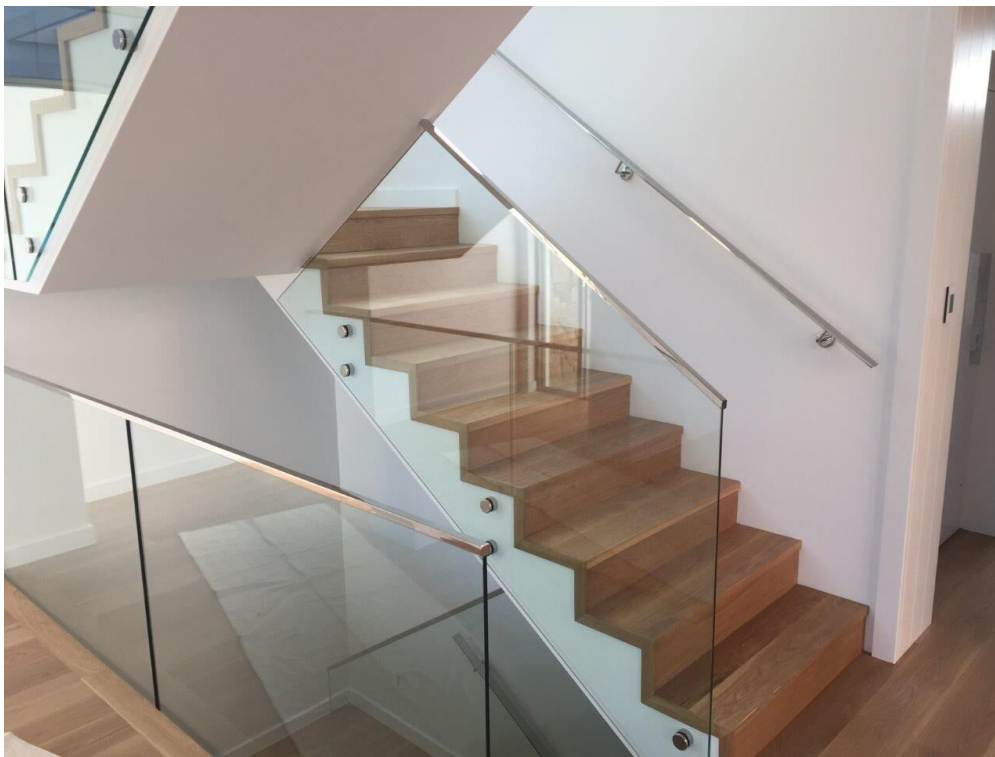
MB100
HEAVYWEIGHT SINGLE ANCHORS



MB100
HEAVYWEIGHT SINGLE ANCHORS

PF-150
PLATE FIX SINGLE ANCHORS





MODERN MINI ROUND & RECTANGULAR 2205 STAINLESS STEEL TOPRAILS FOR 10 & 12MM TOUGHENED GLASS



MH25R



MH25S



MH25RAJ



MH25SAJ



MH25RJ



MH25SJ



MH25RWB



MH25SWB



MH25R90



MH25S90



MH25RWB T



MH25SWB T



MH25RAC



MH25SAC



MH25REC



MH25SEC

EDGETEC 220 LINK RAIL



EDGETEC 220 LINK RAIL



316 STAINLESS STEEL HANDRAIL BRACKETS FOR 12MM TOUGHENED GLASS



MHBG



MHB2



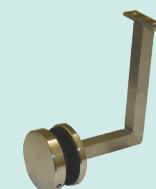
MHB3



MHB4



HB50/R/90



HB50/S/90

NHB1
Radius HandrailNHB2
Flat Handrail

HR-SD50D



HR-SD50



QRHB3



QRHB3W



QRHB4



QRHB4W



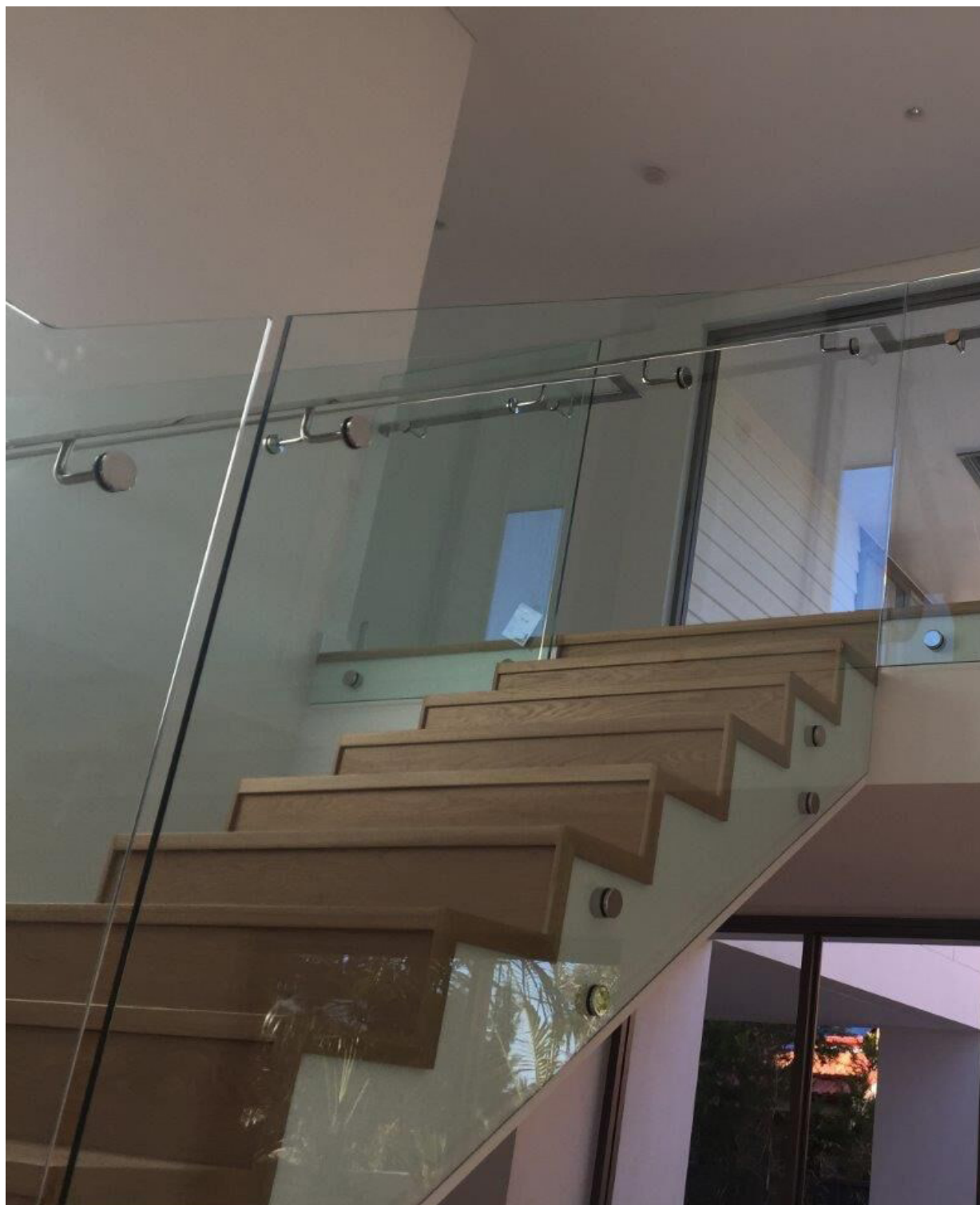
QRHB5



QRHB5W



QRHB6W



AUSTVISION LIGHT WEIGHT SPIDER FITTINGS
FOR BALUSTRADE USE IN
316 SATIN & POLISHED STAINLESS STEEL



444/2



444/4



444/4/2



443/4



443/2



443/2/1



444 SPIDER FITTINGS



ALIGNMENT BRACKETS IN 2205 POLISHED & SATIN STAINLESS STEEL



AB25-W



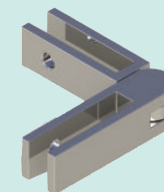
AB25-90



AB25-135



AB25-180



AB25-A

GLASS CLAMPS IN 316 POLISHED & SATIN ELECTROPOLISHED STAINLESS STEEL



ABC60
Round Post



ABC55
Flat Surface



MBC60
Round Post



MBC55
Flat Surface



MBC66
Round Post



MBC62
Flat Surface



MBC47
Round Post



MBC45
Flat Surface



MBC52
Round Post



MBC50
Flat Surface

A collection of various stainless steel pipe fittings, including elbows, tees, crosses, and flanges, arranged on a light blue background. The fittings are made of polished metal and include standard 90-degree and 45-degree elbows, T-junctions, cross-junctions, and various types of flanges and end caps. Some fittings have flared ends or specific mounting features. The arrangement is a grid-like display of different sizes and types of components.

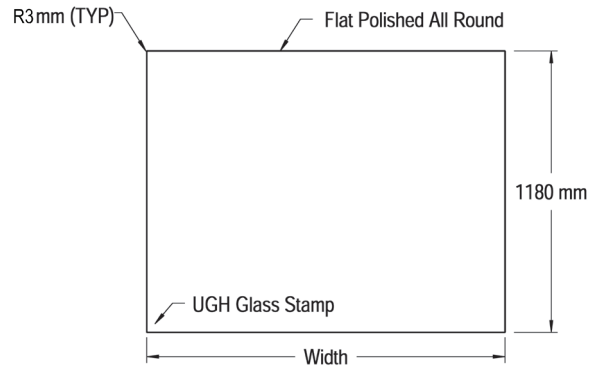
BBD70SQ



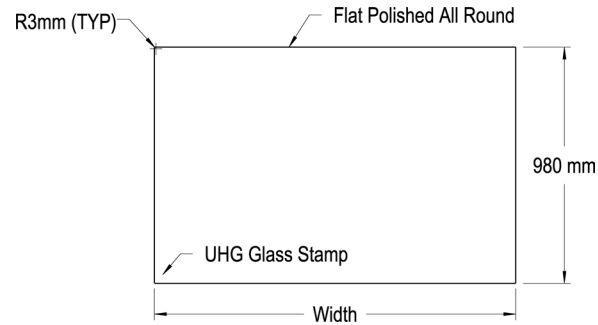


METRO ALUMINIUM POST SYSTEM

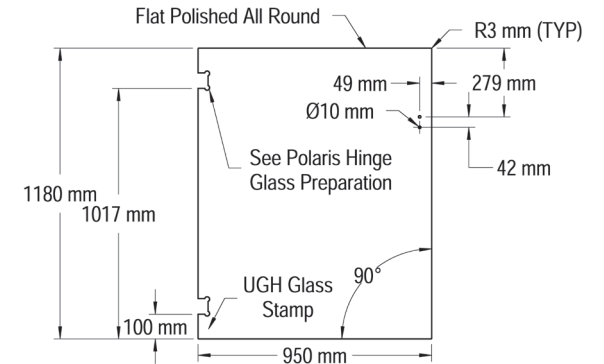
12MM ULTRACLEAR TOUGHENED FRAMELESS GLASS PANELS



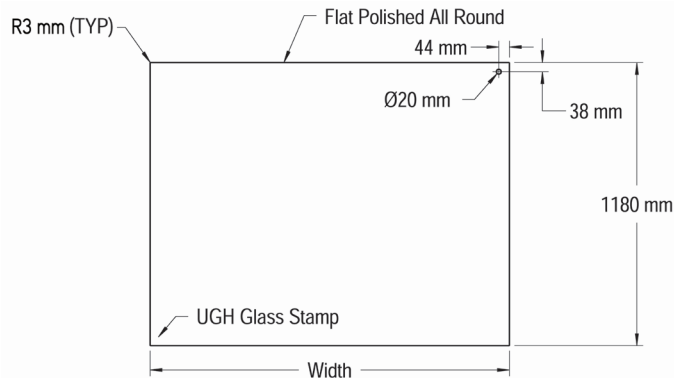
Pool Fence Panel



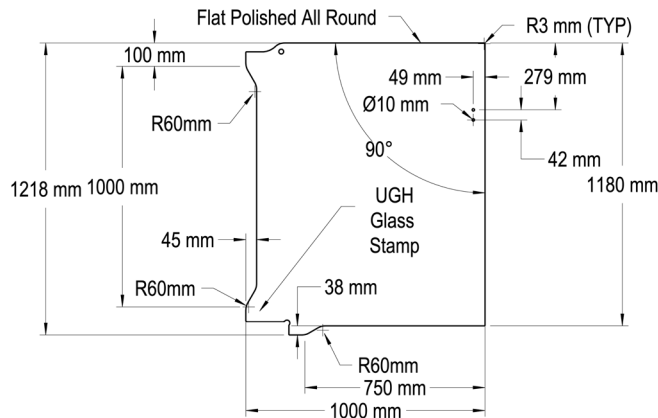
Balustrade Panel



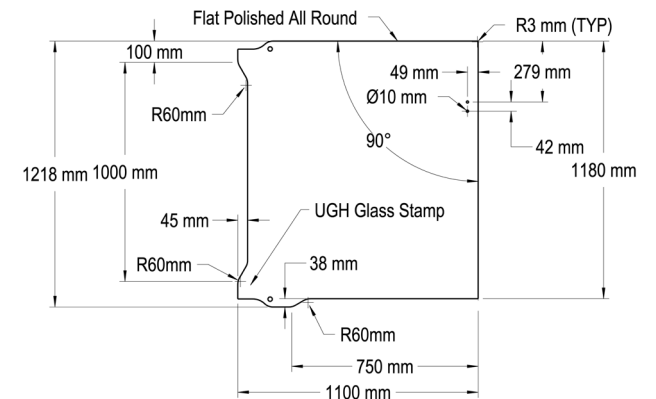
Polaris Hinge Gate Panel



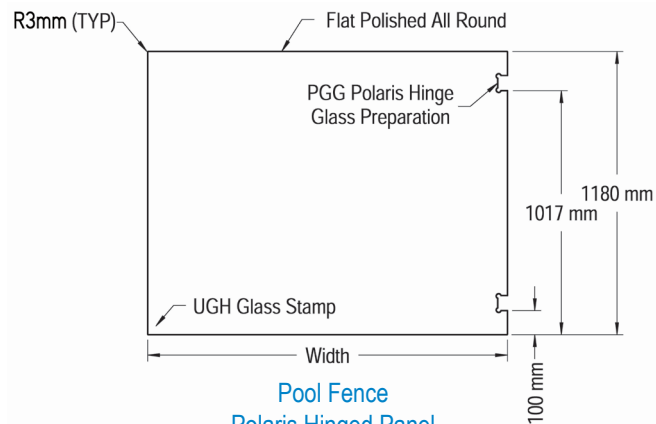
Pool Fence Pivot Panel



Hydraulic Patch Gate Panel



Floorspring Gate Panel



Pool Fence
Polaris Hinged Panel

FRAMELESS GLASS POOL GATES

MFGS provide five self closing mechanism options and several latches that comply with pool fencing requirements.

- Ozone Hydraulic Patch with 316 Stainless Steel Covers
- Modern Floorspring with 316 Stainless Steel Covers
- Biloba Hydraulic Hinges in 25 Micron Brushed Anodised Finish
- Polaris Hinges in 2205 Stainless Steel
- Slimline Spring Hinges in 316 Stainless Steel
- Elite, Slimline & Polaris Latches in 316 Stainless Steel

ELITE & POLARIS LATCHES 316 POLISHED, SATIN STAINLESS STEEL & LA TYPE ALSO IN BLACK



ELITE PIVOT ARMS 316 POLISHED & SATIN STAINLESS STEEL



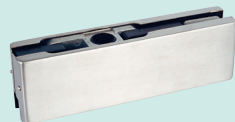
PGA-1 TOP PIVOT ARM, 2 X MP20 TOP PATCHES,
FH-100NHO OZONE HYDRAULIC PATCH & PGL LATCH



FLOORSPRINGS, PATCHES, POOL GATE HINGES & ACCESSORIES



FH-100 NHO
Ozone Hydraulic Patch



MP20P
Top Patch



MFX5/10/15, etc.
Extended Spindles



MP10P
Bottom Patch



MFX840WNHO
Modern Floorspring



GFSSC
Floor Spring
Sealing Compound



SH-070A



SH-071A



SH-072A



120PGG



120PGW



120PRP



120PSP



PGA-1 TOP PIVOT ARM, 2 X MP20
TOP PATCHES, MP10 BOTTOM PATCH,
MFX840WNHO FLOOR SPRING
& PGL LATCH



SLIMLINE LATCHES & HINGES



PGS-75



PGR-75V



PGR-75



PG-180



PG-180V



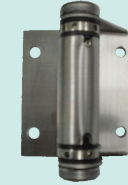
PGC-90



PGH77



PGH77EM



PH01



PGH77L

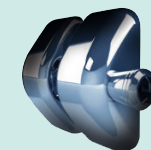
D & D SIDE PULL LATCHES



MLSPS2L

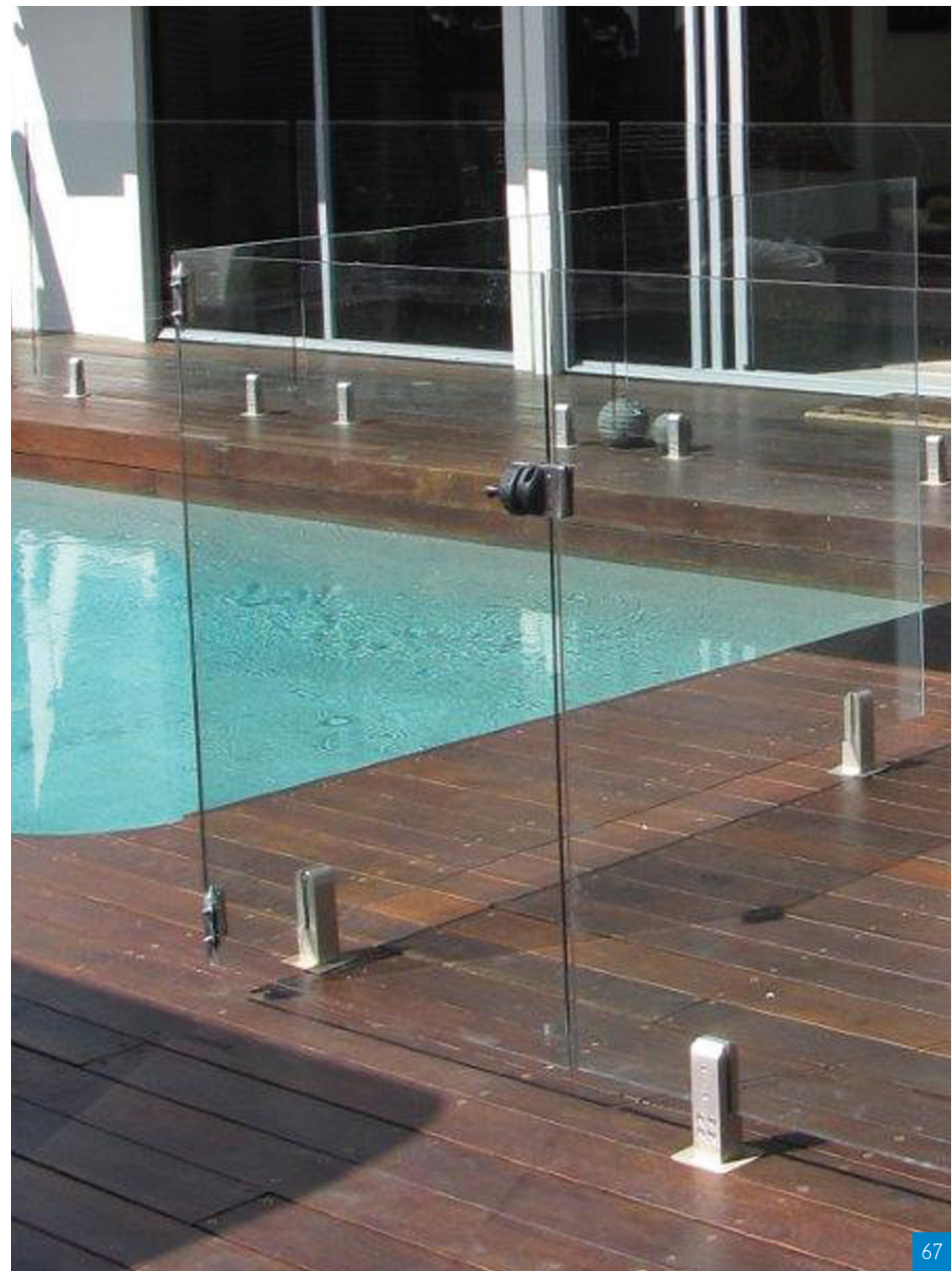


MLSPS2



MLSPS2V

GLAZING SUPPLIES & TOOLS





48. POOL GATE HARDWARE



35. FIN, FACADE & TRUSS SYSTEMS

MANUFACTURED FRAMELESS
GLASS SYSTEMS

MFGS

ULTRAVIEW GLASS
AND HARDWARE
uvgh.com.au



AUSTVISION

GEZE
DISTRIBUTOR

AUSTRALIAN AGENT
GCC

Your local approved glass company is:



36. BALUSTRADE &
POOL FENCE HARDWARE



34. CANOPY
HARDWARE

SUNGLASS BAR