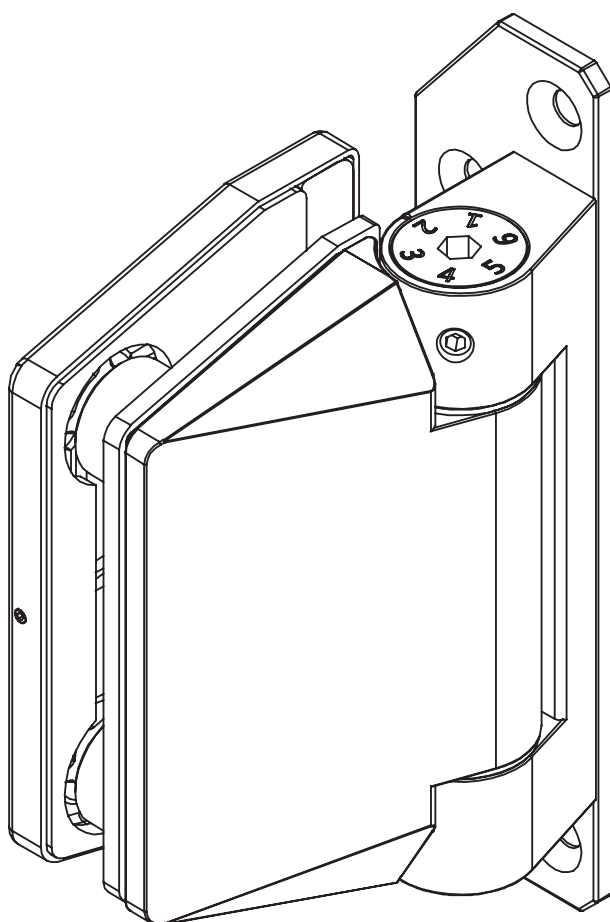


220 SERIES INTERNAL HINGE

GLASS TO DOOR JAMB



FINISHES AND FUNCTIONS

- 2205 GRADE STAINLESS STEEL
- POLISHED STAINLESS
- BRUSHED STAINLESS
- SINGLEACTION
- SOFTCLOSE
- NON-HOLD OPEN



10mm
12mm



MAX.
900mm WIDE

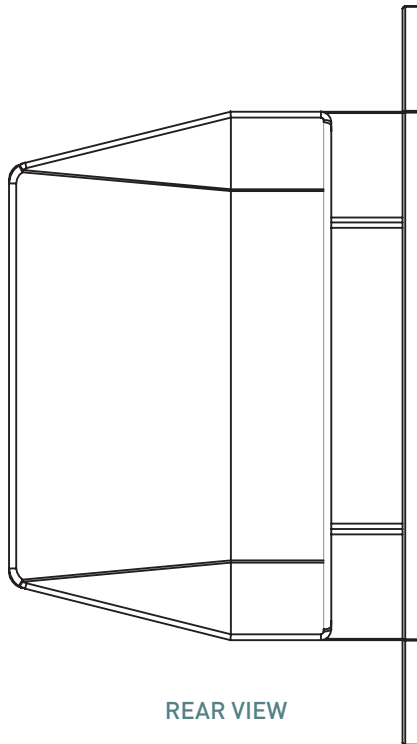


MAX 60kg

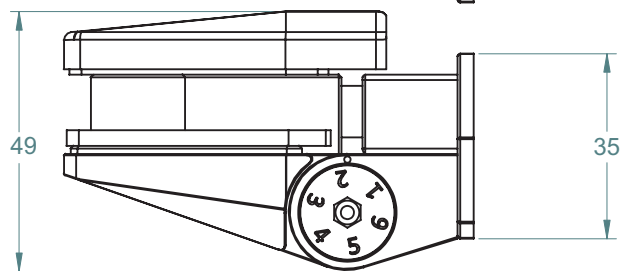


90°

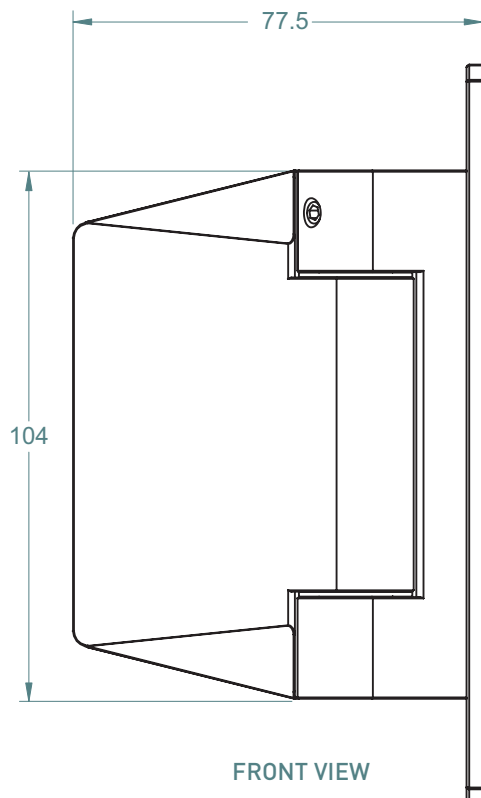
CLOSING FORCE
OPEN 90° = 4Nm
CLOSED 0° = 2Nm



REAR VIEW



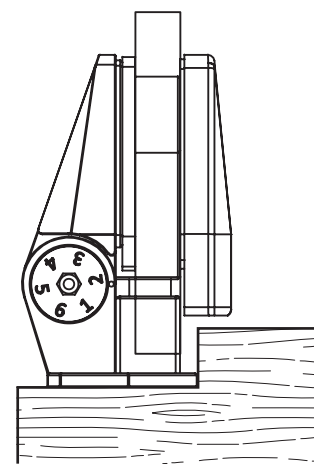
TOP VIEW



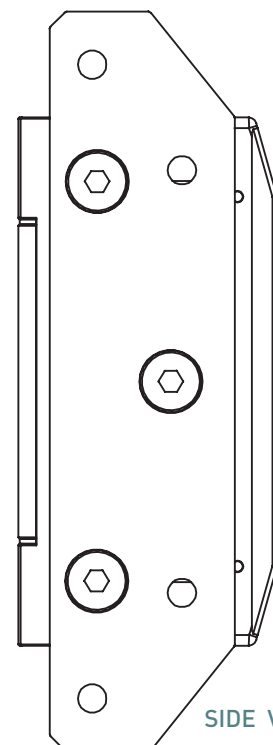
FRONT VIEW

TO ORDER SPECIFY:

- **220IGJP** POLISHED FINISH
- **220IGJS** BRUSHED FINISH



DOOR JAMB ILLUSTRATION

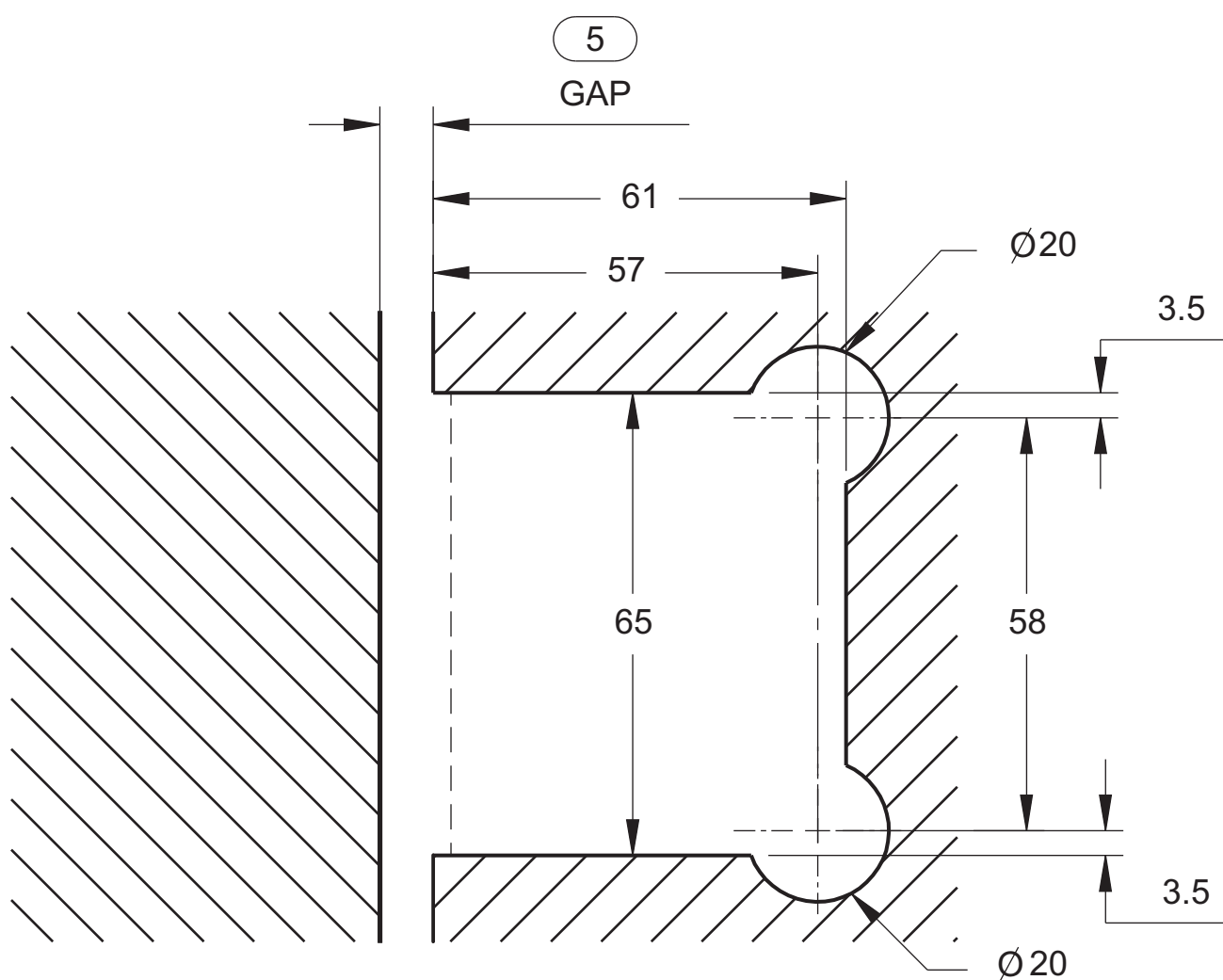


SIDE VIEW

GLASS PREPARATION

120, 220 & 320 SERIES HINGE

GLASS TO WALL/POST



GLASS CUT-OUT TOP AND BOTTOM
(ALL DIMENSIONS IN MILLIMETERS)