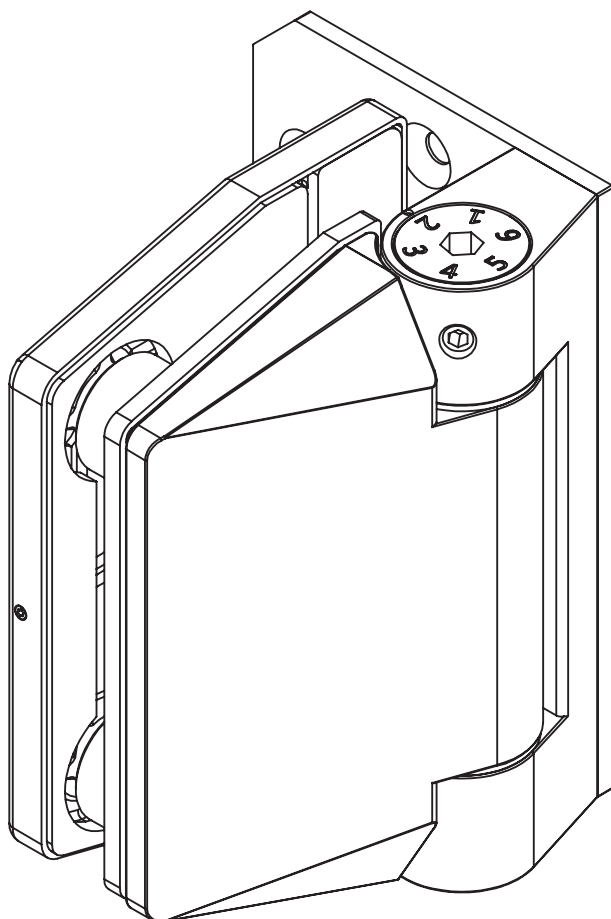


220 SERIES INTERNAL HINGE

GLASS TO WALL



FINISHES AND FUNCTIONS

- 2205 GRADE STAINLESS STEEL
- POLISHED STAINLESS
- BRUSHED STAINLESS
- SINGLE ACTION
- SOFT CLOSE
- NON-HOLD OPEN



10mm
12mm



MAX.
900mm WIDE

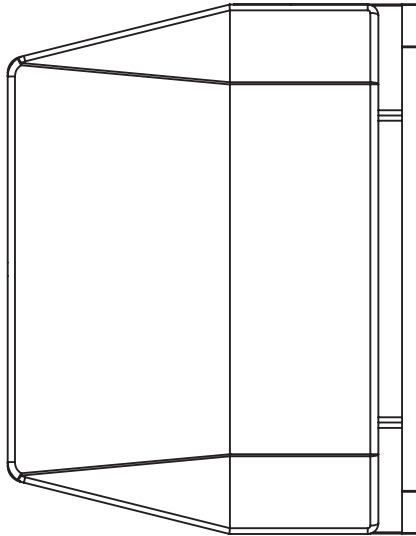


MAX 60kg



90°

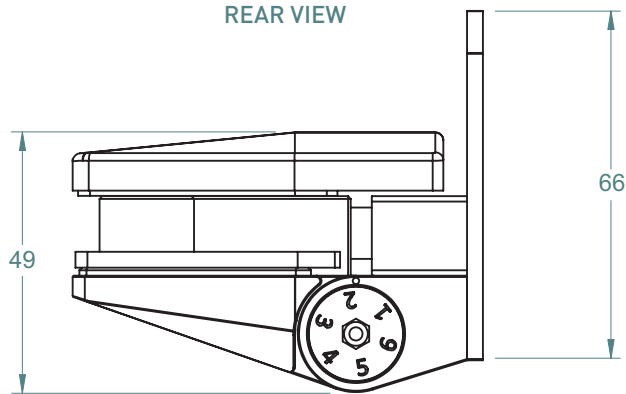
CLOSING FORCE
OPEN 90° = 4Nm
CLOSED 0° = 2Nm



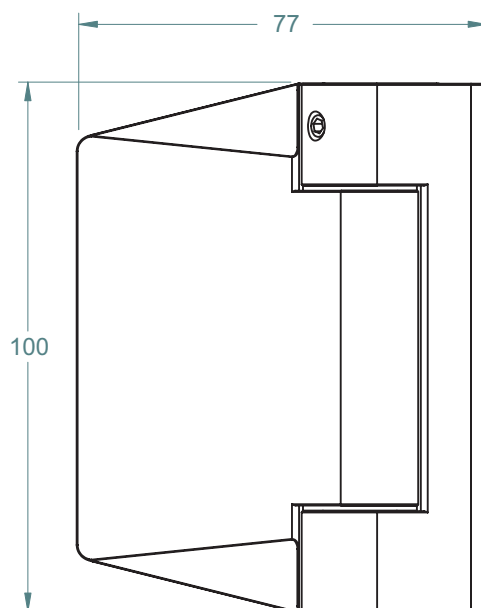
TO ORDER SPECIFY:

- **220IGWP** POLISHED FINISH
- **220IGWS** BRUSHED FINISH

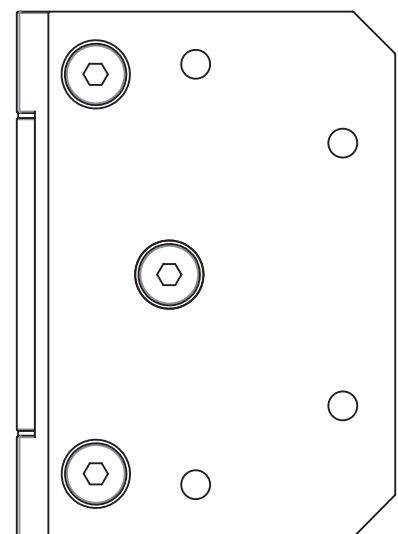
REAR VIEW



TOP VIEW



FRONT VIEW

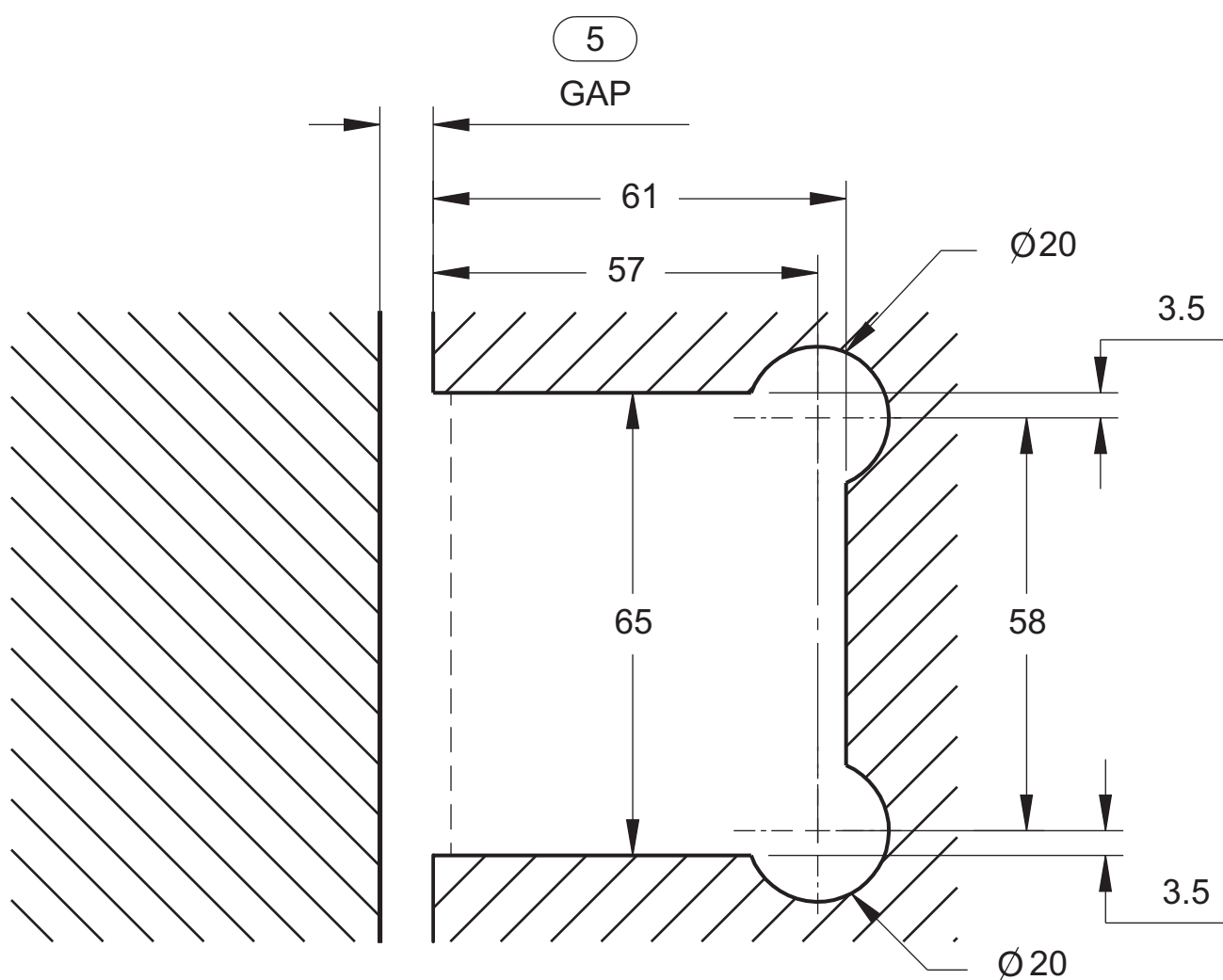


SIDE VIEW

GLASS PREPARATION

120, 220 & 320 SERIES HINGE

GLASS TO WALL/POST



GLASS CUT-OUT TOP AND BOTTOM
(ALL DIMENSIONS IN MILLIMETERS)