

FRAMELESS GLASS POOL GATE HARDWARE INDEX

- 9.1 Latches**
- 9.2 Pivots**
- 9.3 Hydraulic Patch / Floorspring**
- 9.4 Patch Fittings**
- 9.5 Biloba Hydraulic Hinges**
- 9.6 Polaris Hinges**
- 9.7 Slimline Latches**
- 9.8 Slimline Spring Hinges**

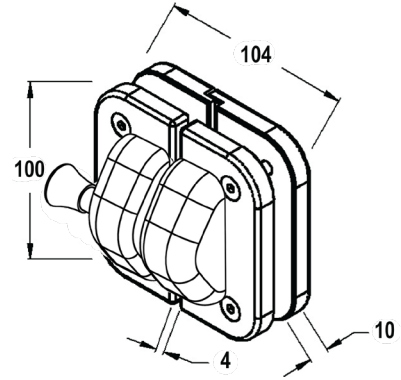
INTENTIONALLY

LEFT

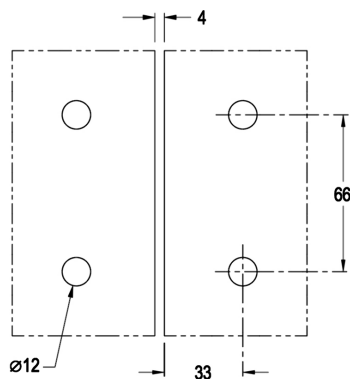
BLANK

FRAMELESS GLASS POOL GATE HARDWARE
PGL/PL2

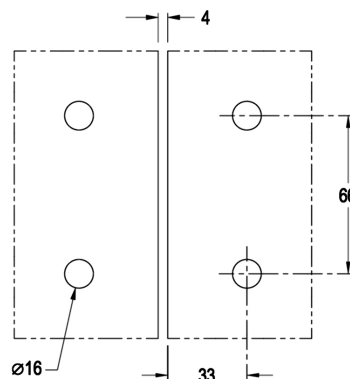

Product Image



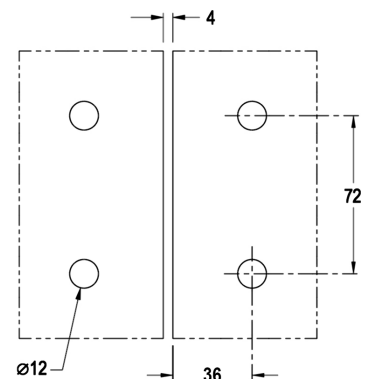
Dimensions



PGL



PGL/PL2



PL2

Glass Preparation


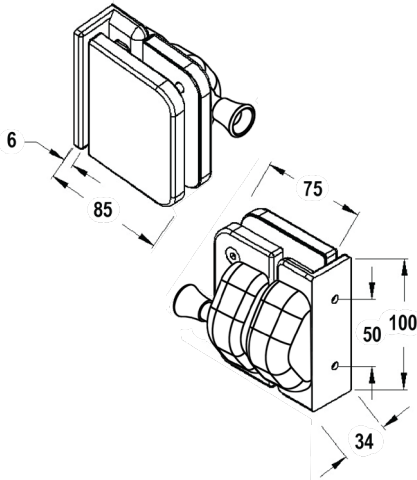
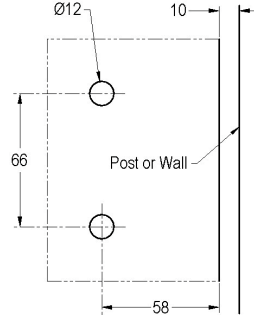

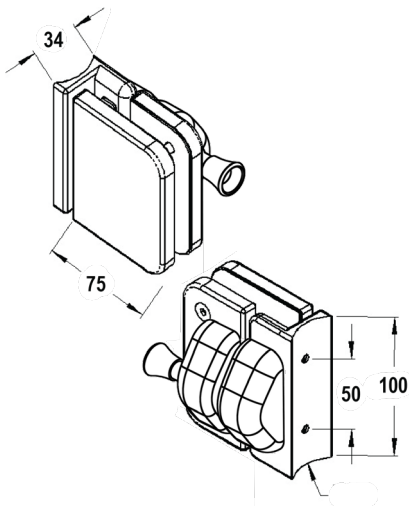
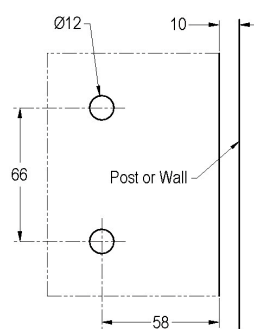
DETAILS
Elite Glass to Glass Latch

- To suit 10/12mm Glass Thickness
- D & D Magna latch
- Also available with lockable black Magna Latch

FINISHES

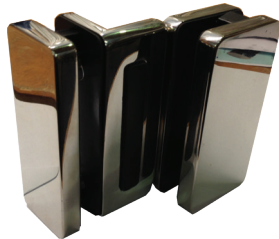
- Black Latch
- Polished SS
- Satin SS

Base material:
Moulded Polymer Latch
316 Stainless Steel

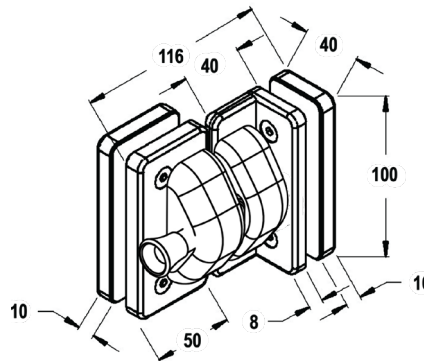
| PGL-PF | | FRAMELESS GLASS POOL GATE HARDWARE | |
|--|---|--|--|
|  |  |  | |
| Product Image | Dimensions | Glass Preparation | |
| DETAILS | | FINISHES | |
| <p><u>Elite Glass to Post/Wall Latch</u></p> <ul style="list-style-type: none">• To suit 10/12mm Glass Thickness• D & D Magna latch• Also available with lockable black Magna Latch | | <ul style="list-style-type: none">• Black Latch• Polished SS• Satin SS <p>Base material: Moulded Polymer Latch 316 Stainless Steel</p> | |
| PGL-PR | | FRAMELESS GLASS POOL GATE HARDWARE | |
|  |  |  | |
| Product Image | Dimensions | Glass Preparation | |
| DETAILS | | FINISHES | |
| <p><u>Elite Glass to Ø50mm Post Latch</u></p> <ul style="list-style-type: none">• To suit 10/12mm Glass Thickness• D & D Magna latch• Also available with lockable black Magna Latch | | <ul style="list-style-type: none">• Black Latch• Polished SS• Satin SS <p>Base material: Moulded Polymer Latch 316 Stainless Steel</p> | |

FRAMELESS GLASS POOL GATE HARDWARE

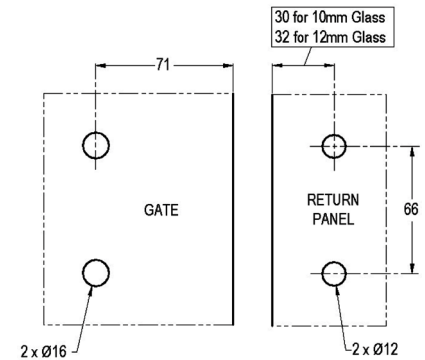
PGL-90



Product Image



Dimensions



Glass Preparation

DETAILS

90° Glass to Glass Latch

- To suit 10mm or 12mm Glass Thickness
- Black D & D Magna latch
- Also available with lockable black Magna Latch

FINISHES

- Black Latch
- Polished SS
- Satin SS

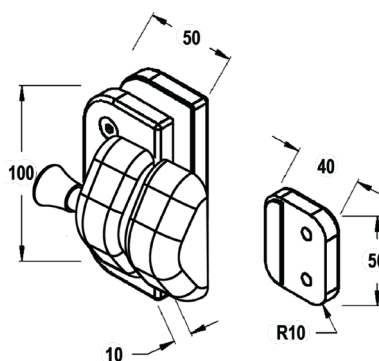
Base material:
Moulded Polymer Latch
316 Stainless Steel

FRAMELESS GLASS POOL GATE HARDWARE

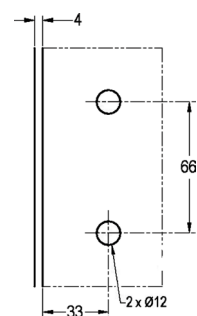
PGL-P



Product Image



Dimensions



Glass Preparation

DETAILS

Glass to Post Latch

- To suit 10mm or 12mm Glass Thickness
- Black D & D Magna latch
- Also available with lockable black Magna Latch

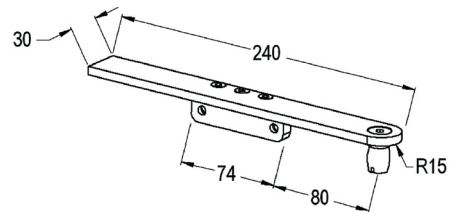
FINISHES

- Black Latch
- Polished SS
- Satin SS

Base material:
Moulded Polymer Latch
316 Stainless Steel

PGA-1

FRAMELESS GLASS BALUSTRADE & POOL FENCE HARDWARE



Product Image

Dimensions

DETAILS

Patch to Patch Pivot Arm

- 5mm clearance between gate & pivot panel
- Used with MP20 patch fitting (see page 9.4a)

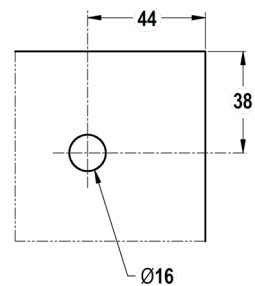
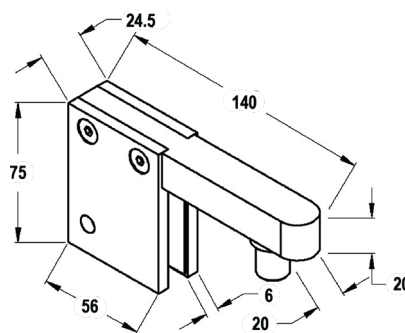
FINISHES

- Polished
- Satin

Base material: 316 Stainless Steel

PGA-2

FRAMELESS GLASS BALUSTRADE & POOL FENCE HARDWARE



Product Image

Dimensions

Glass Preparation

DETAILS

Glass to Patch Pivot Arm

- 5mm clearance between gate & pivot panel

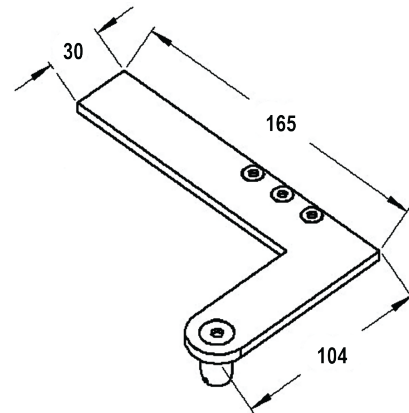
FINISHES

- Polished
- Satin

Base material: 316 Stainless Steel

FRAMELESS GLASS POOL GATE HARDWARE
PGA-3R/L


Product Image



Dimensions

DETAILS
90° Patch to Patch Pivot Arm

- 15mm clearance between gate & side panel
- End of side panel overlaps gate by 9mm
- Used with MP20 patch fitting (see page 9.4a)
- Right hand shown above (PGA-3R), as in fixed panel on the right when gate opening out, fixed panel on the left when gate opening in.

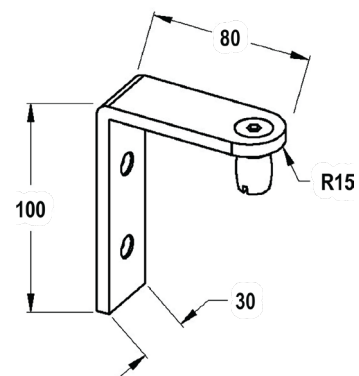
FINISHES

- Polished
- Satin

Base material: 316 Stainless Steel

FRAMELESS GLASS POOL GATE HARDWARE
PWA-1


Product Image



Dimensions

DETAILS
Wall / Square Post Mount Pivot Arm

- 10mm clearance between gate & wall/post

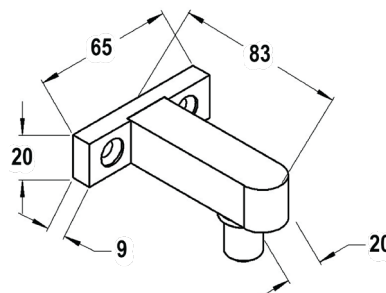
FINISHES

- Polished
- Satin

Base material: 316 Stainless Steel

PWA-2

FRAMELESS GLASS POOL GATE HARDWARE



Product Image

Dimensions

DETAILS

Wall / Square Post Mount Pivot Arm

- 10mm clearance between gate & wall

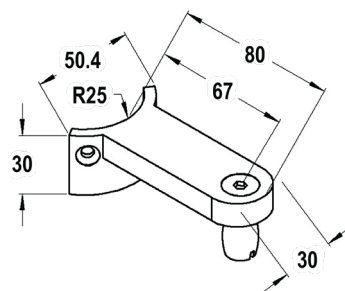
FINISHES

- Polished
- Satin

Base material: 316 Stainless Steel

PWA-3

FRAMELESS GLASS POOL GATE HARDWARE



Product Image

Dimensions

DETAILS

Ø50mm Post Mount Pivot Arm

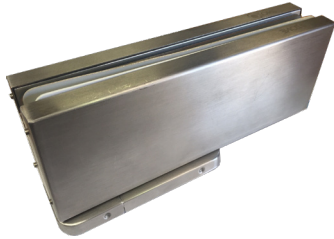
- 12mm clearance between gate & Ø50mm post

FINISHES

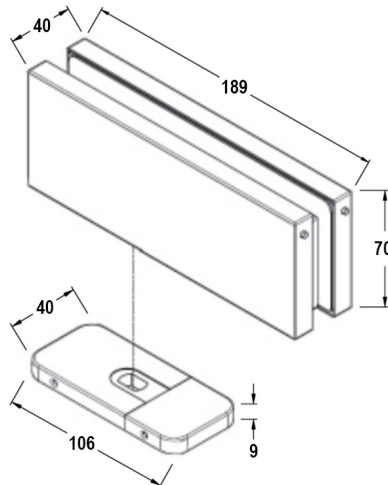
- Polished
- Satin

Base material: 316 Stainless Steel

FRAMELESS GLASS POOL GATE HARDWARE

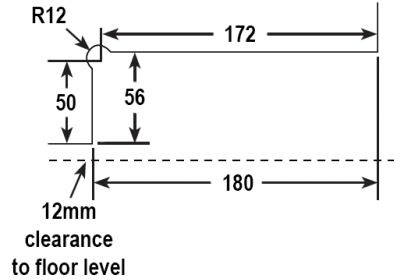
FH-100NHO


Product Image



Dimensions

Where the radius corner meets the cutout the points should be tipped or R5



Glass Preparation

DETAILS

Ozone Hydraulic Patch Fitting

- Suitable for 8-12mm toughened glass
- Non Hold Open
- When used with a PWA-1 a 12mm clearance is required to wall/post
- When used with a PGA-1 a 7mm clearance is required between panels
- 100kg weight capacity with max 1000mm gate width

FINISHES

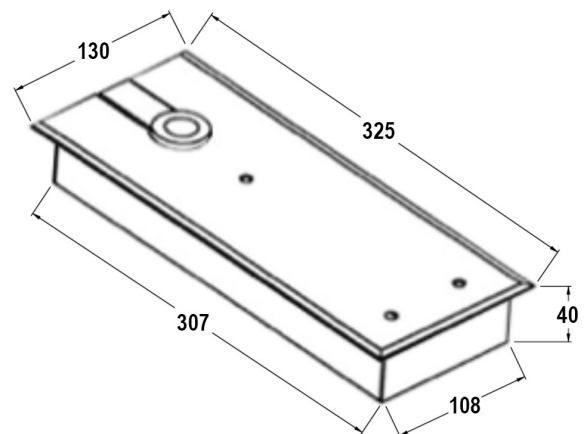
- Polished
- Satin

Base material:
Aluminium Body
316 Stainless Steel Covers

FRAMELESS GLASS POOL GATE HARDWARE

MFx840WNHO


Product Image



Dimensions

DETAILS

Modern Floorspring

- Weak Strength (15nm)
- Non Hold Open
- 100kg weight capacity with max 1100mm gate width
- 12mm clearance under gate

FINISHES

- Polished
- Satin

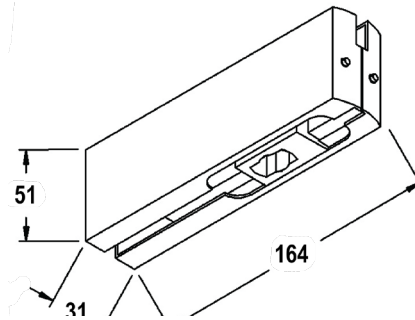
Base material:
Cast Steel Body
304 Stainless Steel Painted Box
316 Stainless Steel Cover

MP10P

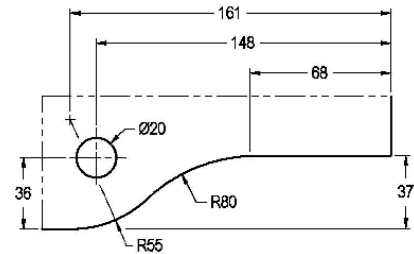
FRAMELESS GLASS POOL GATE HARDWARE



Product Image



Dimensions



Glass Preparation

DETAILS

Bottom Patch Fitting

- Suitable for 10 & 12mm glass

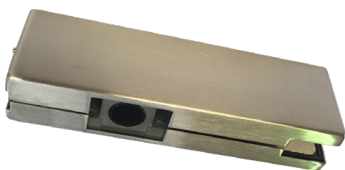
FINISHES

- Polished
- Satin

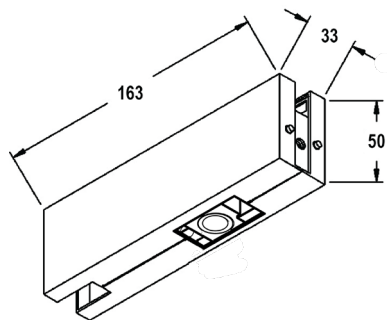
Base Material:
Aluminium Body
316 Stainless Steel Covers

MP20P

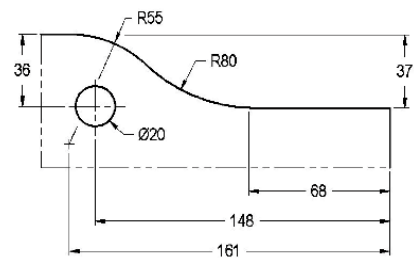
FRAMELESS GLASS POOL GATE HARDWARE



Product Image



Dimensions



Glass Preparation

DETAILS

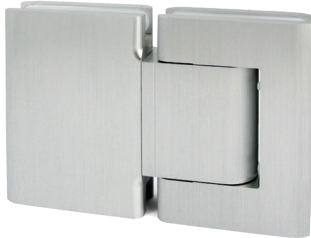
Top Patch Fitting

- Suitable for 10 & 12mm glass
- MP20 patch body with MP34 covers to close in around the pivot point

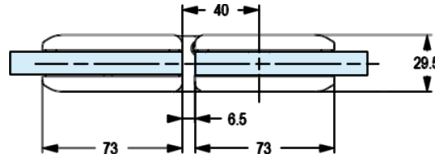
FINISHES

- Polished
- Satin

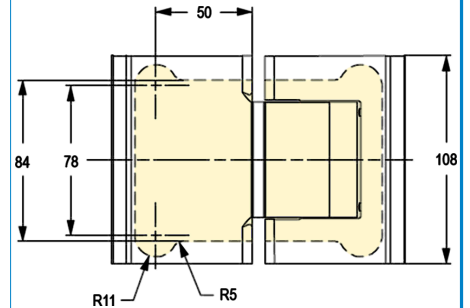
Base Material:
Aluminium Body
316 Stainless Steel Covers

FRAMELESS GLASS POOL GATE HARDWARE
SH-070


Product Image



Dimensions



Glass Preparation

DETAILS
Biloba Glass to Glass Hydraulic Hinge

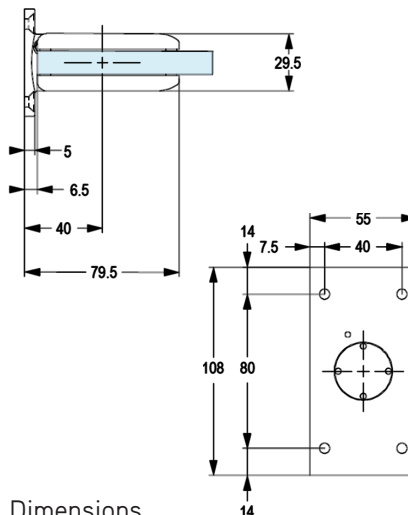
- Suitable for 10 & 12mm glass
- 80kg weight capacity
- Non Hold Open
- Max 1000mm width

FINISHES

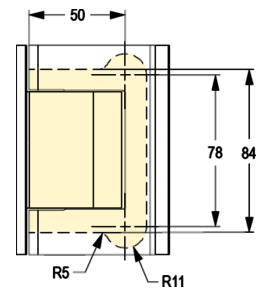
- 25 Micron Brushed NA
- Base material: Aluminium

FRAMELESS GLASS POOL GATE HARDWARE
SH-071


Product Image



Dimensions



Glass Preparation

DETAILS
Biloba Glass to Wall Centre Fix Hydraulic Hinge

- Suitable for 10 & 12mm glass
- 100kg weight capacity
- Non Hold Open
- Max 1000mm width

FINISHES

- 25 Micron Brushed NA
- Base material: Aluminium

INTENTIONALLY

LEFT

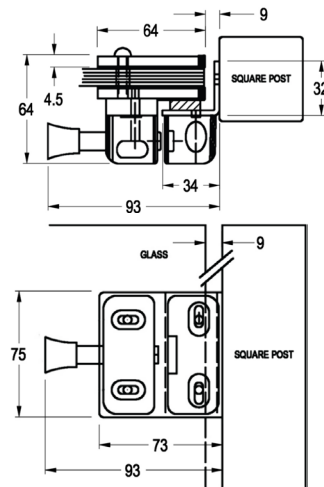
BLANK

FRAMELESS GLASS POOL GATE HARDWARE

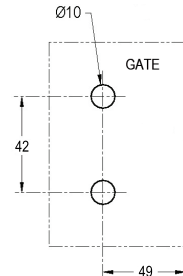
PGS75



Product Image



Dimensions



Glass Preparation

DETAILS

Slimline Glass to Wall Latch

- Suitable for 10 & 12mm Glass
- Black D & D Magna latch
- Also available with lockable black Magna Latch or Stainless Steel Vizage Latch

FINISHES

- Black Latch
- Polished SS
- Satin SS

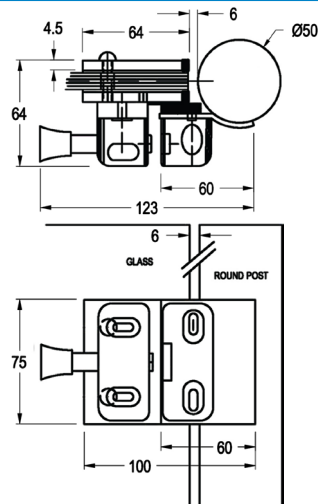
Base material:
Moulded Polymer Latch
316 Stainless Steel

FRAMELESS GLASS POOL GATE HARDWARE

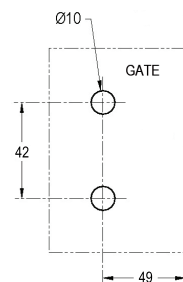
PGR75



Product Image



Dimensions



Glass Preparation

DETAILS

Slimline Glass to Ø50mm Post Latch

- Suitable for 10 & 12mm Glass
- Black D & D Magna latch
- Also available with lockable black Magna Latch or Stainless Steel Vizage Latch
- Product image shown with Vizage Latch but standard with black Magna Latch

FINISHES

- Black Latch
- Polished SS
- Satin SS

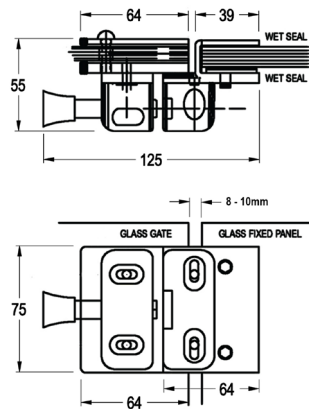
Base material:
Moulded Polymer Latch
316 Stainless Steel

PG180

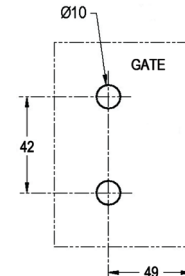
FRAMELESS GLASS POOL GATE HARDWARE



Product Image



Dimensions



Glass Preparation

DETAILS

Slimline 180° Glass to Glass Latch

- Suitable for 10 & 12mm Glass
- Clamp mounted keeper
- Black D & D Magna latch
- Also available with lockable black Magna Latch or Stainless Steel Vizage Latch

FINISHES

- Black Latch
- Polished SS
- Satin SS

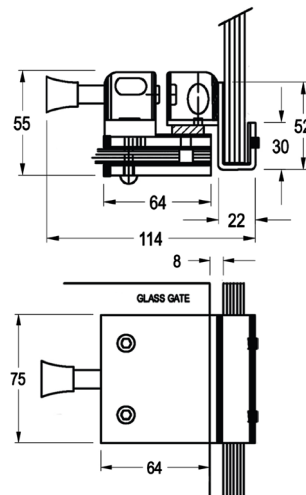
Base material:
Moulded Polymer Latch
316 Stainless Steel

PGC90

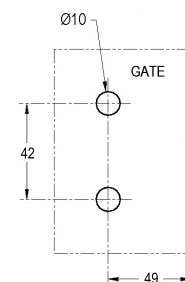
FRAMELESS GLASS POOL GATE HARDWARE



Product Image



Dimensions



Glass Preparation

DETAILS

Slimline 90° Glass to Glass Latch

- Suitable for 10 & 12mm Glass
- Clamp mounted keeper
- Black D & D Magna latch
- Also available with lockable black Magna Latch or Stainless Steel Vizage Latch

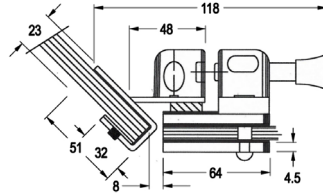
FINISHES

- Black Latch
- Polished SS
- Satin SS

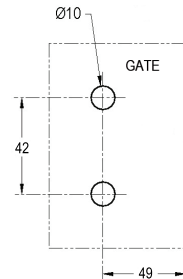
Base material:
Moulded Polymer Latch
316 Stainless Steel

FRAMELESS GLASS POOL GATE HARDWARE
PG135


Product Image



Dimensions



Glass Preparation

DETAILS
Slimline 135° Glass to Glass Latch

- Suitable for 10 & 12mm Glass
- Clamp mounted keeper
- Black D & D Magna latch
- Also available with lockable black Magna Latch or Stainless Steel Vizage Latch

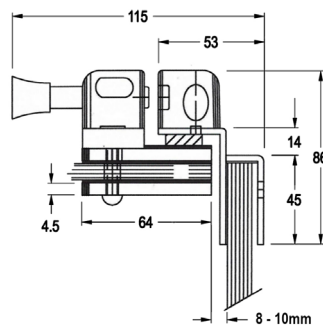
FINISHES

- Black Latch
- Polished SS
- Satin SS

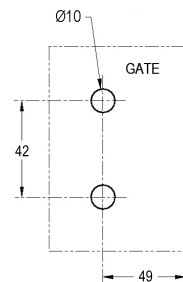
Base material:
Moulded Polymer Latch
316 Stainless Steel

FRAMELESS GLASS POOL GATE HARDWARE
PGC90-IN


Product Image



Dimensions



Glass Preparation

DETAILS
Slimline 90° Inswing Glass to Glass Latch

- Suitable for 10 & 12mm Glass
- Clamp mounted keeper
- Black D & D Magna latch
- Also available with lockable black Magna Latch or Stainless Steel Vizage Latch

FINISHES

- Black Latch
- Polished SS
- Satin SS

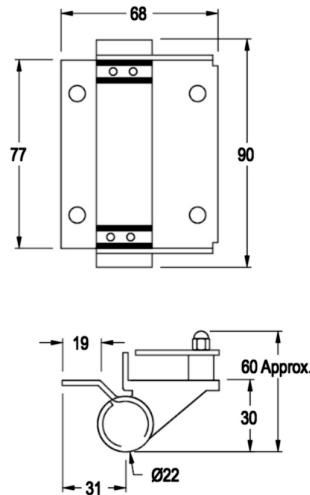
Base material:
Moulded Polymer Latch
316 Stainless Steel

PGH77

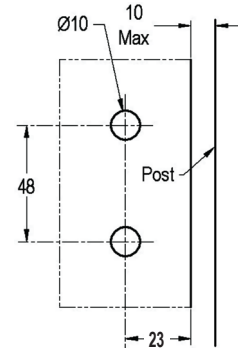
FRAMELESS GLASS POOL GATE HARDWARE



Product Image



Dimensions



Glass Preparation

DETAILS

Slimline Glass to Square Post Hinge

- Suitable for 8 & 10mm Glass
- Non hold open
- 35kg weight capacity with max gate width 800mm

FINISHES

- Polished
- Satin

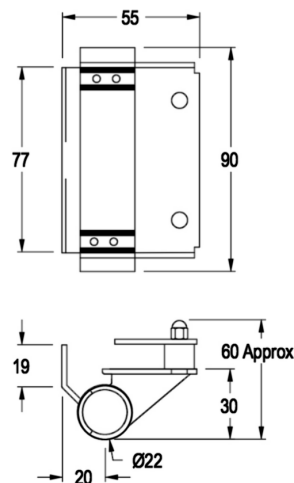
Base material: 316 Stainless Steel

PGH77L

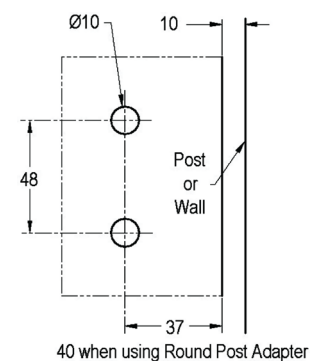
FRAMELESS GLASS POOL GATE HARDWARE



Product Image



Dimensions



Glass Preparation

DETAILS

Slimline Glass to Wall/Post Hinge

- Suitable for 8 & 10mm Glass
- Non hold open
- 35kg weight capacity with max gate width 800mm

FINISHES

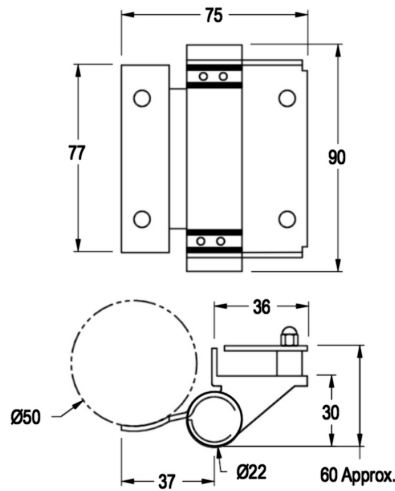
- Polished
- Satin

Base material: 316 Stainless Steel

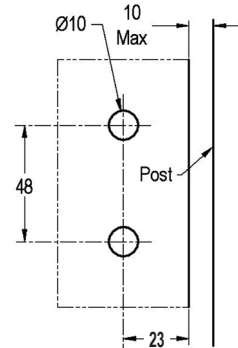
FRAMELESS GLASS POOL GATE HARDWARE

PGH77EM


Product Image



Dimensions



Glass Preparation

DETAILS

Slimline 90° Glass to Ø50 Post Hinge

- Suitable for 8 & 10mm Glass
- Non hold open
- 35kg weight capacity with max gate width 800mm

FINISHES

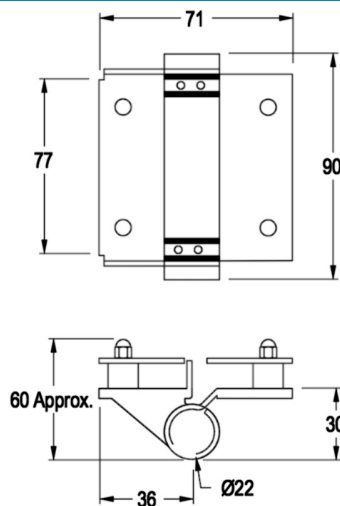
- Polished
- Satin

 Base material:
316 Stainless Steel

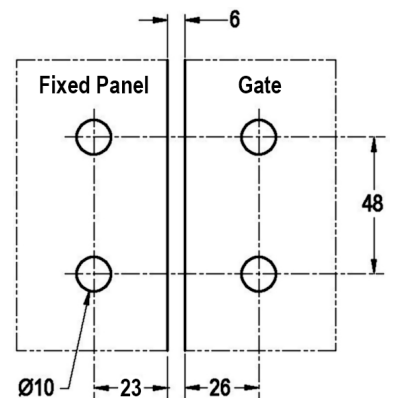
FRAMELESS GLASS POOL GATE HARDWARE

PH01


Product Image



Dimensions



Glass Preparation

DETAILS

Slimline 180° Glass to Glass Hinge

- Suitable for 8 & 10mm Glass
- Non hold open
- 35kg weight capacity with max gate width 800mm

FINISHES

- Polished
- Satin

 Base material:
316 Stainless Steel