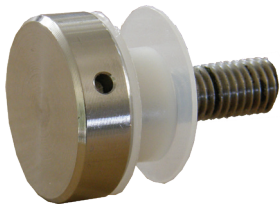


Button Head & Thread

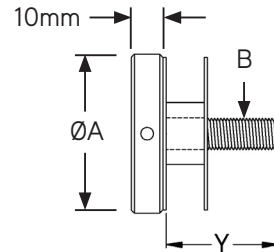
FRAMELESS GLASS ANCHOR FIXINGS



Product Image

PRODUCT CODE	A	B	Ø GLASS HOLE
BT19-Y	19mm	M6	10mm
BT25-Y	25mm		
BT32-Y	32mm	M8	12mm
BT38-Y	38mm	M10	20mm
BT50-Y	50mm		

Glass Preparation



Dimensions

DETAILS

Button Head & Thread

- “Y” in code is required length of threaded rod from button head.
- Stock length of threaded rod is 18mm
- Supplied with plastic sleeve & 2 nylon washers
- 5mm & 10mm Spacers available (POA)
- Thread (B) in table can be supplied in alternate size by request (POA)
- [Email manufactured@mfgs.com.au](mailto:manufactured@mfgs.com.au) to order

FINISHES

- Polished
- Satin

Base material:
304 or 316 Stainless Steel
Plastic Sleeve
Nylon Washers