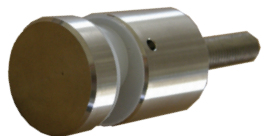


# Button Head Anchors

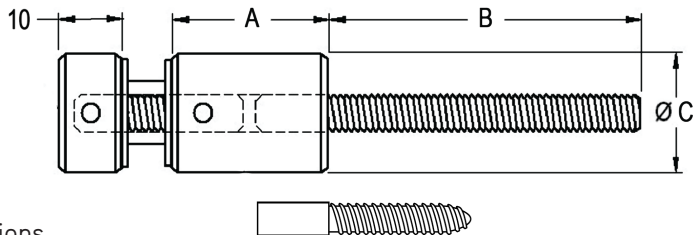
# FRAMELESS GLASS ANCHOR FIXINGS



Product Image

PRODUCT CODE	Ø GLASS HOLE	A	B	C
GSBH-19x25	10mm	25mm	M6 x 50mm	19mm
GSBH-19x50		50mm		25mm
GSBH-25x25		25mm	50mm	
GSBH-25x50		50mm		
GSBH-32x25	12mm	25mm	M8 x 50mm	32mm
GSBH-32x50		50mm		

Glass Preparation



Dimensions

## DETAILS

### Button Head Anchors

- Also available with 25mm Lagscrew
- 5mm & 10mm Spacers available (POA)
- Thread (B) in table can be supplied in alternate size by request (POA)
- [Email manufactured@mfgs.com.au](mailto:manufactured@mfgs.com.au) to order custom sizes

## FINISHES

- Translucent Washers
- Polished SS
- Satin SS

Base material:

Nylon Washers

Plastic Sleeve

304 or 316 stainless steel