

FRAMELESS GLASS ANCHOR FIXINGS

Button Head & Lagscrew

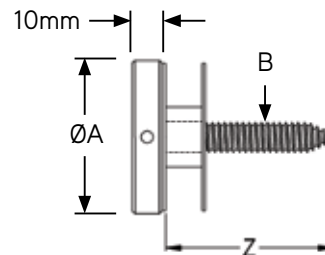


Product Image

Glass Preparation

| PRODUCT CODE | A | B | Z MINIMUM | Ø GLASS HOLE |
|--------------|------|-----|-----------|--------------|
| BL19-Z | 19mm | M6 | 25mm | 10mm |
| BL25-Z | 25mm | | | |
| BL32-Z | 32mm | M10 | 30mm | 20mm |
| BL38-Z | 38mm | | 50mm | |
| BL50-Z | 50mm | M12 | | 22mm |

Dimensions



DETAILS

Button Head & Lag Screw

- Replace "Z" in code with required length of lag screw from button head
- Supplied with plastic sleeve & 2 nylon washers
- Maximum lag screw length 55mm for M6
- 5mm & 10mm Spacers available (POA)
- Lagscrew (B) in table can be supplied in alternate size by request (POA)

FINISHES

- Polished
- Satin

Base material:
304 or 316 Stainless Steel
Plastic Sleeve
Nylon Washers