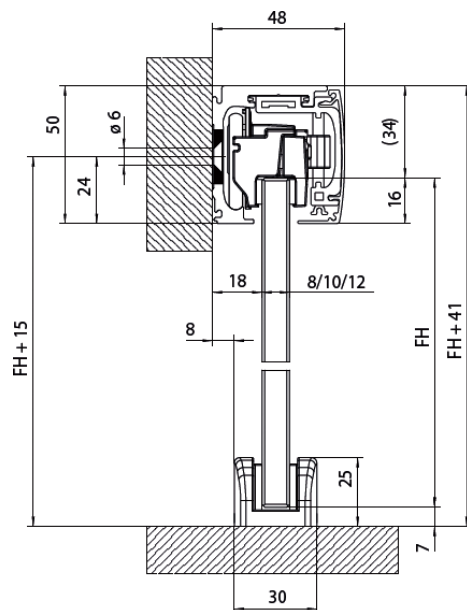
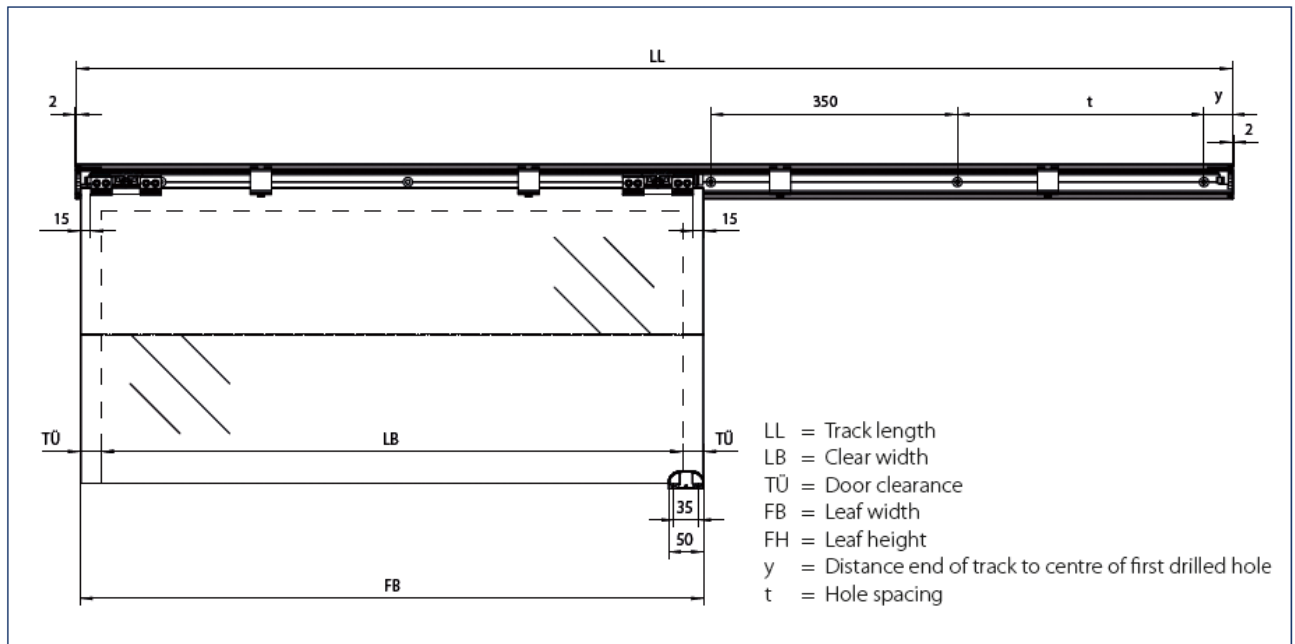
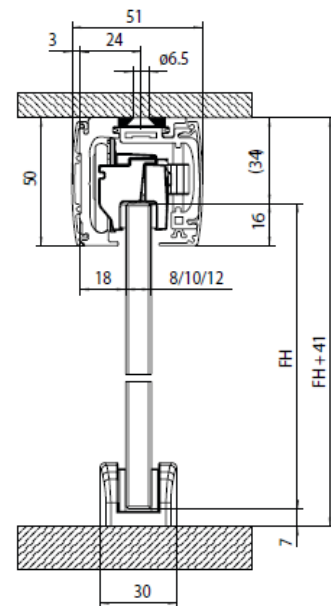


# FRAMELESS GLASS SLIDING DOOR SYSTEMS

## Geze Levolan 60



**Wall Installation  
(GL60-2450)**



**Ceiling Installation  
(GL60-2450 + GLBC-2850)**

### DETAILS

#### Geze Levolan 60

- 60kg weight capacity for 8/10/12mm toughened glass
- Suitable for door widths between 400 & 1240mm
- See page 4.1b for GL60-2450 kit inclusions & softstop details
- Email [manufactured@mfgs.com.au](mailto:manufactured@mfgs.com.au) for custom length kits including those requiring glass mounting, spacer and/or fixed panel profile.
- For further information please refer to download section at [www.mfgs.com.au](http://www.mfgs.com.au)

### FINISHES

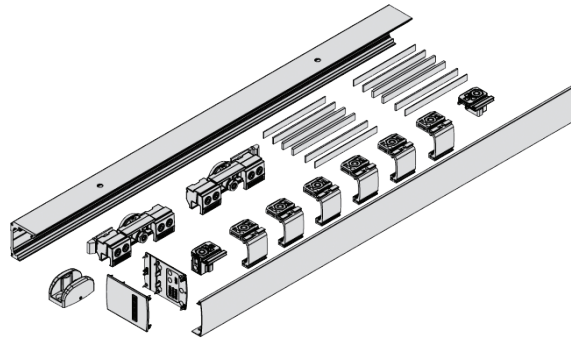
- Natural Anodised
- Satin Stainless Anodised

Base material:  
Aluminium

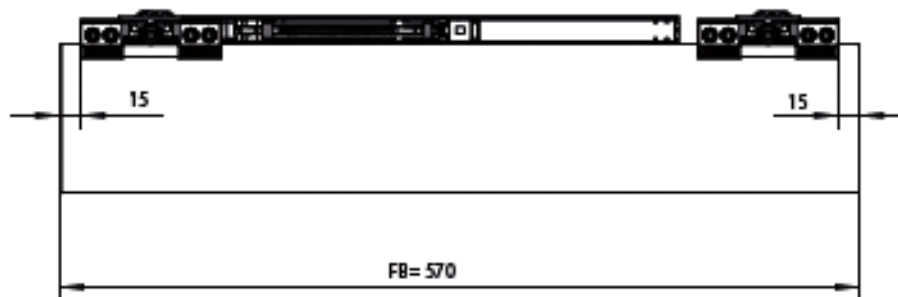
**Geze Levolan 60****FRAMELESS GLASS SLIDING DOOR SYSTEMS**

GL60-2450 Wall Installation Kit Includes:

- 1 x 2450mm track & front cover profile
- 2 x roller carriages
- 2 x buffers
- 2 x end covers
- 1 x adjustable floor guide
- No handle included

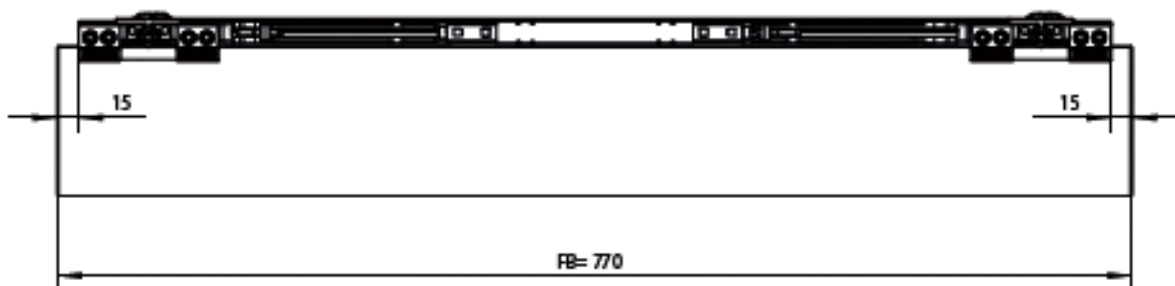


**Draw-in damping on one side**



FB = Leaf width (min)

**Draw-in damping on both sides**



FB = Leaf width (min)