



METRO FRAMELESS GLASS SYSTEMS

Unit O, 35 Maurice Road, Penrose

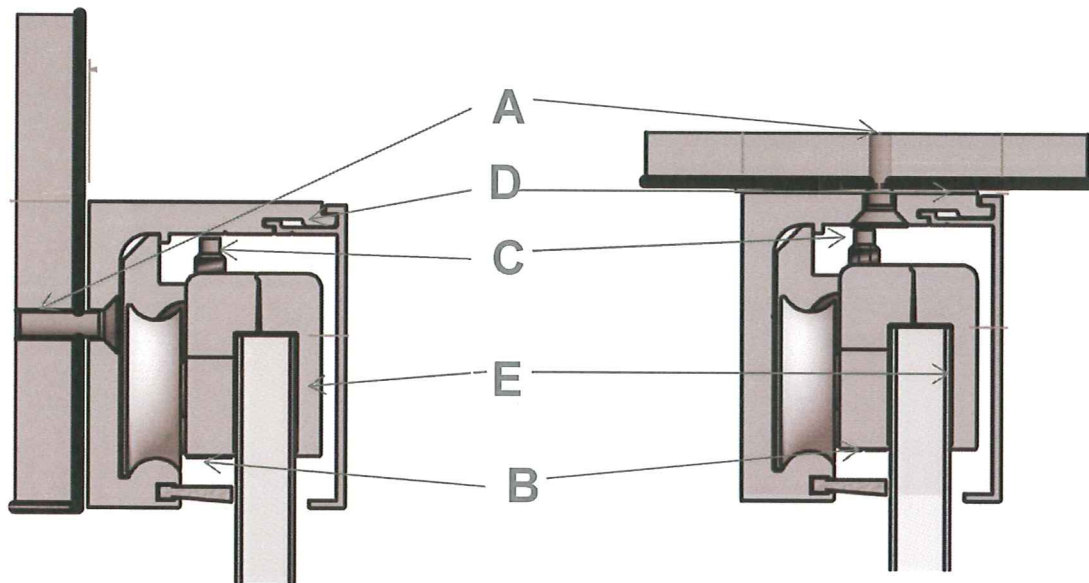
PO Box 112 186, Penrose, Auckland 1642, New Zealand

Phone 09 622 2643 Fax 09 622 2648

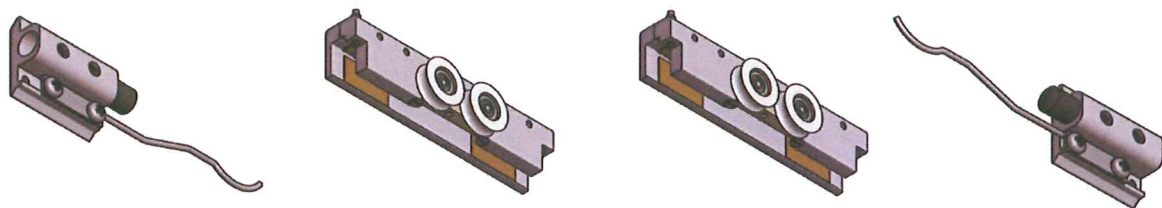
Website www.metroframeless.co.nz

SPECIALITY FRAMELESS DOOR SYSTEMS

Glass Glide Installation Guide



- A. To fix the track into the ceiling or wall use 10 gauge CSK screws at 300mm to 600mm centre's. Ensure screw heads are counter sunk flush into the track
- B. Once the door and hangers are installed onto the track and the door is fitted you can then if required use the height adjustment allen screw to raise or lower the door.
- C. Adjust the anti jump screw so it clears the underside of the track by 1mm to 2mm max.
- D. To secure the pelmet cover in place use several short beads of silicon between the track and pelmet cover. For a 2000mm track use 3 beads of silicon at 2mm x 20mm long.
- E. **Note:** Clamps have gaskets glued in place for 12mm glass. For 10mm glass use the additional 2mm thick gasket. Fix these to outer section of the clamps.



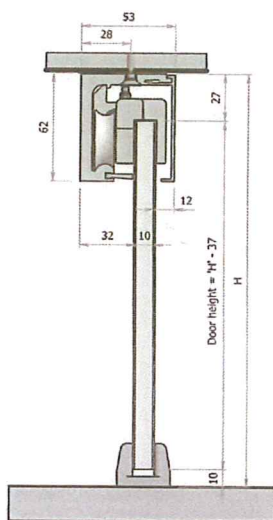


METRO FRAMELESS GLASS SYSTEMS

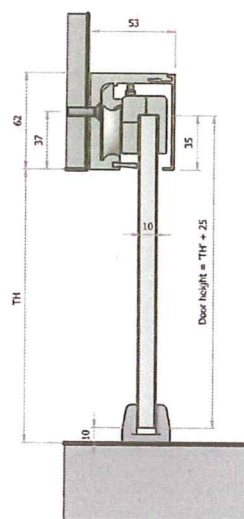
Unit O, 35 Maurice Road, Penrose
 PO Box 112 186, Penrose, Auckland 1642, New Zealand
 Phone 09 622 2643 Fax 09 622 2648
 Website www.metroframeless.co.nz

SPECIALITY FRAMELESS DOOR SYSTEMS

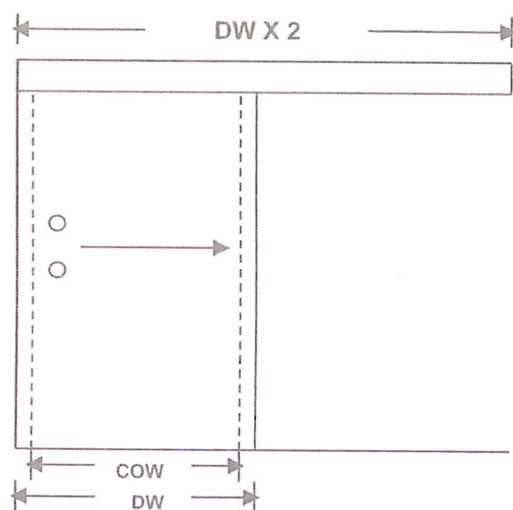
Glass Glide Installation Guide



Ceiling fix
 To determine door height
 H = Overall opening height
 DH = Glass door height
 $DH = H$ less 37mm



Wall fix
 To determine door height
 TH = Opening height to underside of transom
 DH = Glass door height
 $DH = TH$ plus 25mm



To determine door width
 COW = Clear opening width
 DW = Door width
 Doors typically overlap the clear opening by 35mm each side
 Eg. $DW = COW + 70mm$
 Track length is 2 x door width



METRO FRAMELESS GLASS SYSTEMS

Unit O, 35 Maurice Road, Penrose

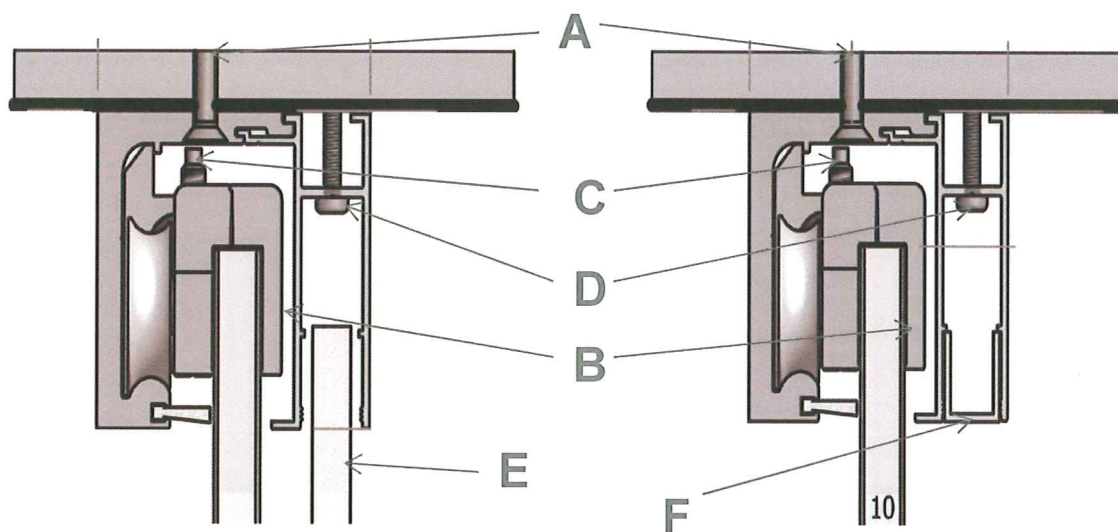
PO Box 112 186, Penrose, Auckland 1642, New Zealand

Phone 09 622 2643 Fax 09 622 2648

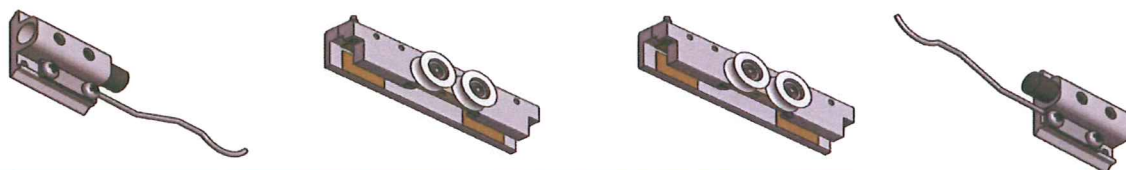
Website www.metroframeless.co.nz

SPECIALITY FRAMELESS DOOR SYSTEMS

Glass Glide Installation Guide



- A. To fix the track into the ceiling use 10 gauge CSK screws at 300mm to 600mm centre's. Ensure screw heads are counter sunk flush into the track
- B. Once the door and hangers are installed onto the track and the door is fitted you can then if required use the height adjustment allen screw to raise or lower the door.
- C. Adjust the anti jump screw so it clears the underside of the track by 1mm to 2mm max.
- D. Fit side light carrier to the track & secure with screws at 300mm to 600mm centers
- E. Fit & glaze the side light glass into the side light carrier and wall/floor channel.
- F. Cut the side light infill section (CS15 channel) to the width of the opening and secure in place with clear silicon.
- G. **Note:** Clamps have gaskets glued in place for 12mm glass. For 10mm glass use the additional 2mm thick gasket. Fix these to outer section of the clamps.



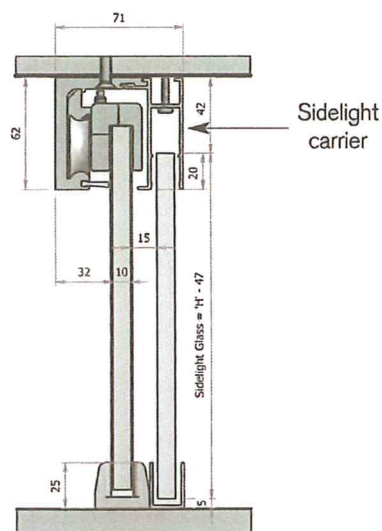
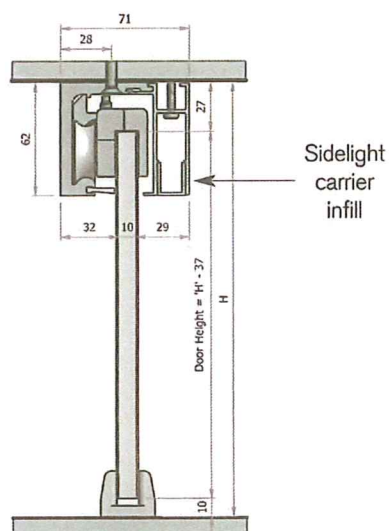


METRO FRAMELESS GLASS SYSTEMS

Unit O, 35 Maurice Road, Penrose
 PO Box 112 186, Penrose, Auckland 1642, New Zealand
 Phone 09 622 2643 Fax 09 622 2648
 Website www.metroframeless.co.nz

SPECIALITY FRAMELESS DOOR SYSTEMS

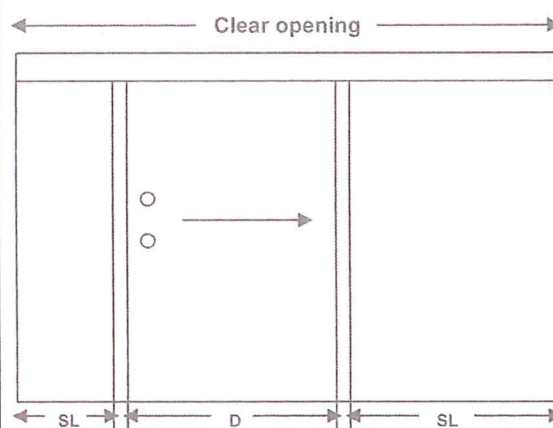
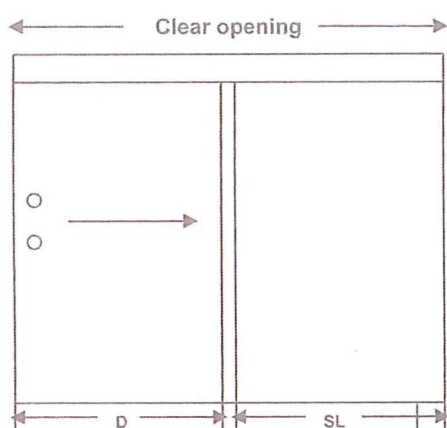
Glass Glide Installation Guide



To determine the height of glass doors & sidelights

H = Overall opening height
 DH = Glass door height
 DH = H less 37mm

SL = Glass sidelight height
 SL = H less 47mm



With the Metro Glass Glide sliding door & sidelight system there are numerous set out options.

Above are two of the more common options.

Note: It is recommended that the door and sidelight overlap be 35mm each side.

When glazing side lights specify CS25 channel.