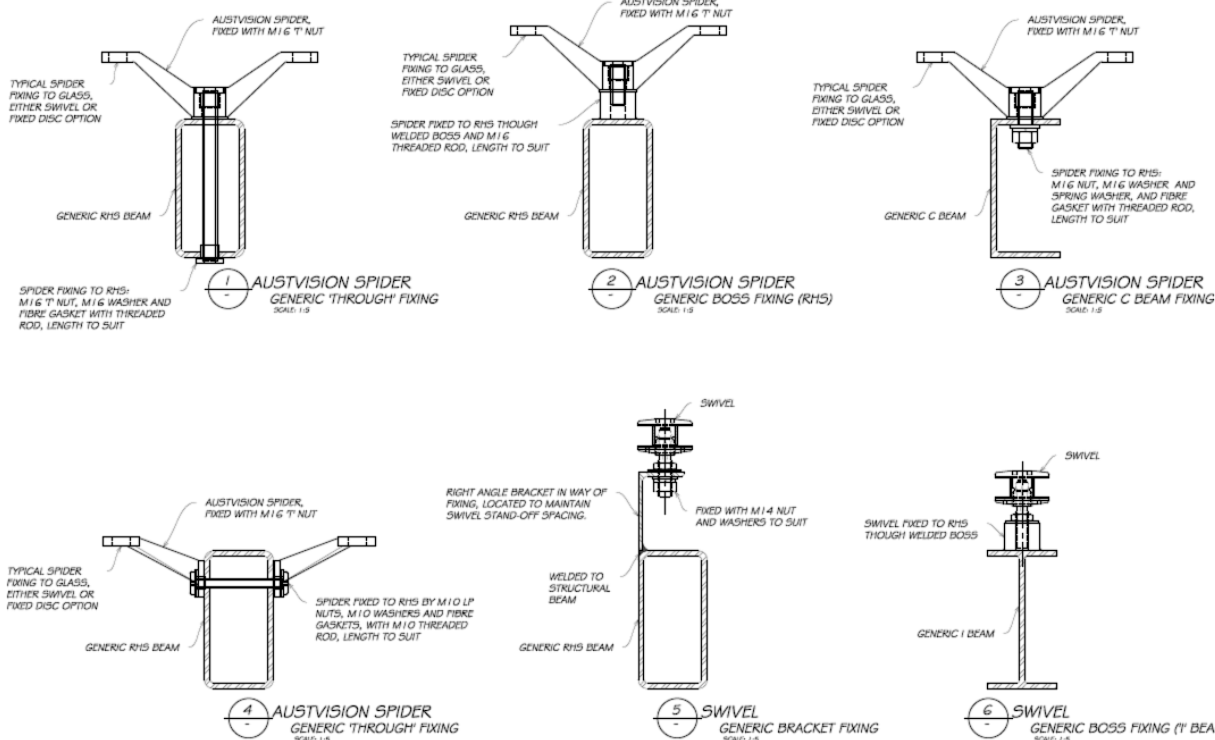


1 TYPICAL CANOPY COMPONENTS  
CANOPY DESIGN ILLUSTRATION ONLY  
SCALE: 1:15



## DETAILS

### Austvision Frameless Glass Heavyweight Spider Canopy

- Suitable for 10 to 19mm toughened glass & 11.5 to 22mm toughened laminated
- 445 or 446 series – four or two way heavy duty spider fittings
- Glass fixings - M10 CSK Disc or 60/22-22n swivel disc to suit the application
- Email [manufactured@mfgs.com.au](mailto:manufactured@mfgs.com.au) to order or discuss your requirements

## FINISHES

- Polished
- Satin

Base material: 316 Stainless Steel