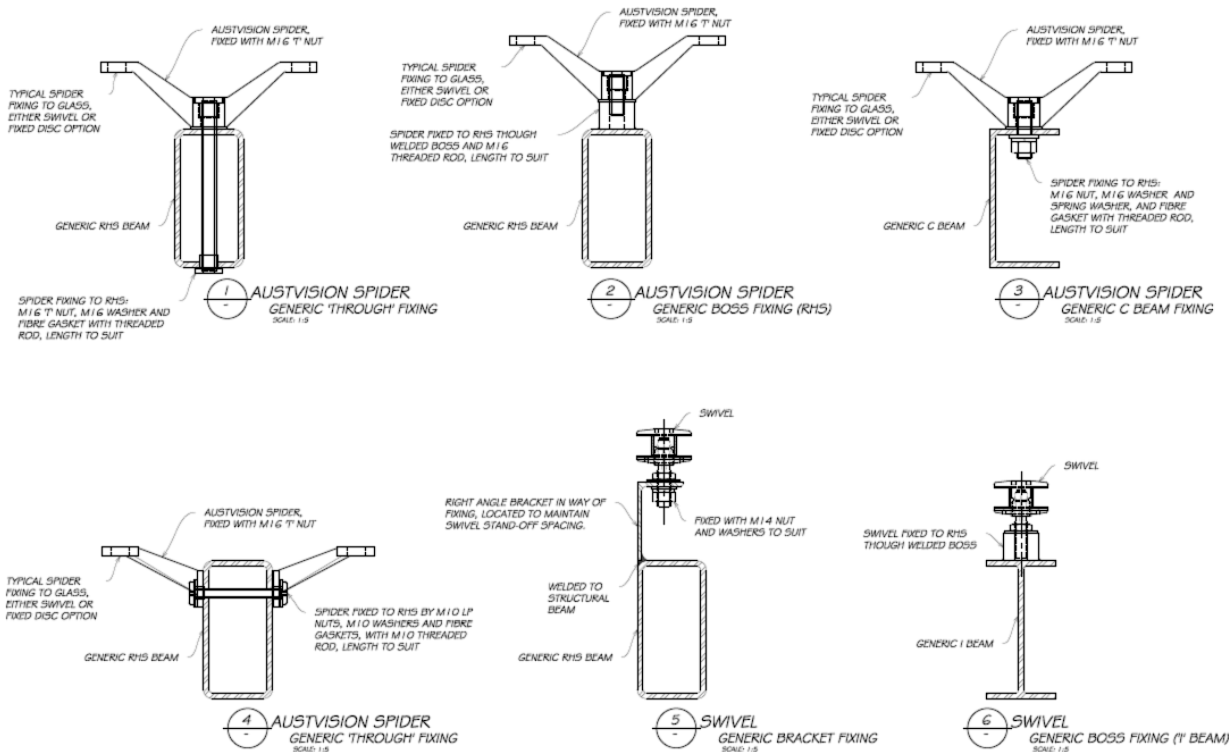


1 TYPICAL CANOPY COMPONENTS
CANOPY DESIGN ILLUSTRATION ONLY
SCALE: 1:15



DETAILS

Austvision Frameless Glass Lightweight Spider Canopy

- Suitable for 10 to 19mm toughened glass & 11.5 to 22mm toughened laminated
- 443 or 444 series – four or two way light duty spider fittings
- Generic drawings above show M16 fixing methods for 445 & 446 series spiders, M10 fixings are used for 443 & 444 series spiders.
- Glass fixings - M10 CSK Disc or 60/22-22n swivel disc to suit the application
- Email manufactured@mfgs.com.au to order or discuss your requirements

FINISHES

- Polished
- Satin

Base material: 316 Stainless Steel