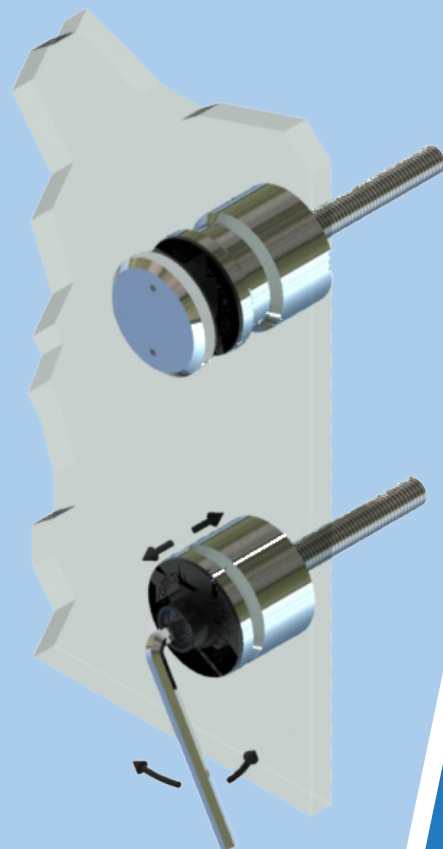


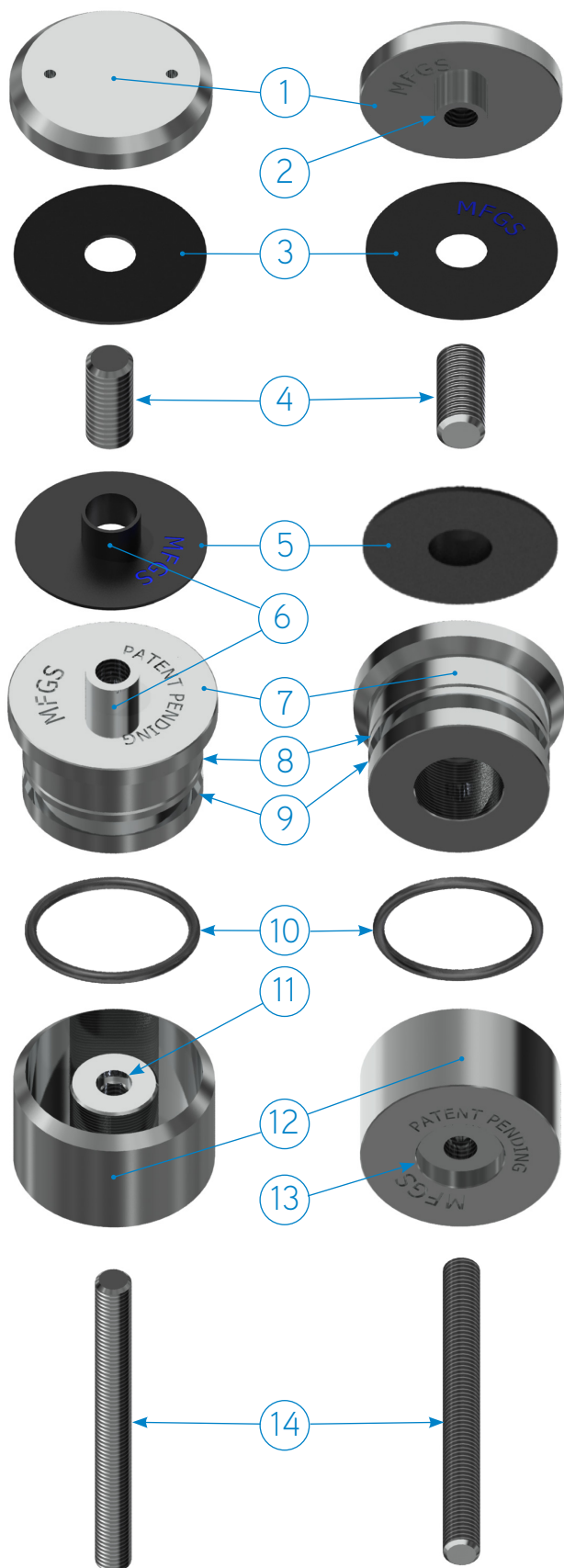
MODERN ADJUSTABLE GLASS ANCHOR MB50x40-50

MFGS

MODERN FRAMELESS
GLASS SYSTEMS

- Adjustable with Allen Key before & after installation of glass panels
- Passed AS/NZS1170 Testing Loads due to a 20mm Diameter glass hole preparation & 50mm Diameter Mounting Body/Cap
- Telescopic Body hides the thread for a seamless appearance.
- See over for more Innovative & Superior Features





1. Cap with snake eyes and chamfered edge to match mounting body. Square edge cap with Countersunk Machine Screw fixing also available.
2. Step in Cap allows correct penetration of M10 threaded rod.
3. 49mm x 1mm Acetal Plastic Cap Washer
4. M10 threaded rod to suit 12mm toughened glass, other lengths available on request.
5. 49mm x 1mm Acetal Plastic Mounting Body Washer with integrated Bush.
6. Step in Mounting Body in conjunction with Washer/Bush aids in supporting the glass panel while the Caps are being installed and during adjustment.
7. Mounting Body is adjustable for a wall clearance between 40mm & 50mm via the use of an Allen Key through the centre before and after installation of the glass panels.
8. Recessed mark in mounting body indicates maximum recommended adjustment of 10mm.
9. Recess for Rubber O-Ring.
10. Rubber O-Ring creates friction for finer adjustment, restricts movement prior to glass panels being installed and also helps to prevent foreign matter entering the inside of the anchor.
11. Allen Key recess at centre of the Base Body allows tightening onto M10 threaded rods and helps with insertion of Lagscrews into timber with the use of a battery drill and Allen Key Bit.
12. Base Body
13. Recess in Base Body allows for tightening hard against concrete slab after excess epoxy may have emerged around the M10 threaded rod.
14. 115mm x M10 Threaded Rod. Other fixing methods including Lagscrews available on request.

MFGS

MODERN FRAMELESS
GLASS SYSTEMS

Modern Frameless Glass Systems Pty Ltd

Unit 13 / 205-213 Port Hacking Road, Miranda NSW 2228

P 02 9522 3983 | F 02 9522 4102

customer.service@mfgs.com.au

mfgs.com.au