



# MF75 GLASSTECH FRAMELESS FOLDING DOOR SYSTEM



The MF75 Glasstech Folding Door System is ideal for all internal folding door installations. With the full frameless effect the MF75 Glasstech system is not only an effective room divider, it is also a stunning design feature being able to be used with many styles of glass.

MF75 is very versatile by being able to fold doors from two panels to six panels in one direction. This means that up to twelve doors per opening is possible.

MF75 can be used in folding applications such as room dividers, pantry doors, wardrobe doors, cupboard doors & folding serving windows to name but a few.

Max Door Height 2700mm

Max Door Width 900mm

Glass type 10mm Clear Toughened

All components are corrosion resistant and satin silver finish.

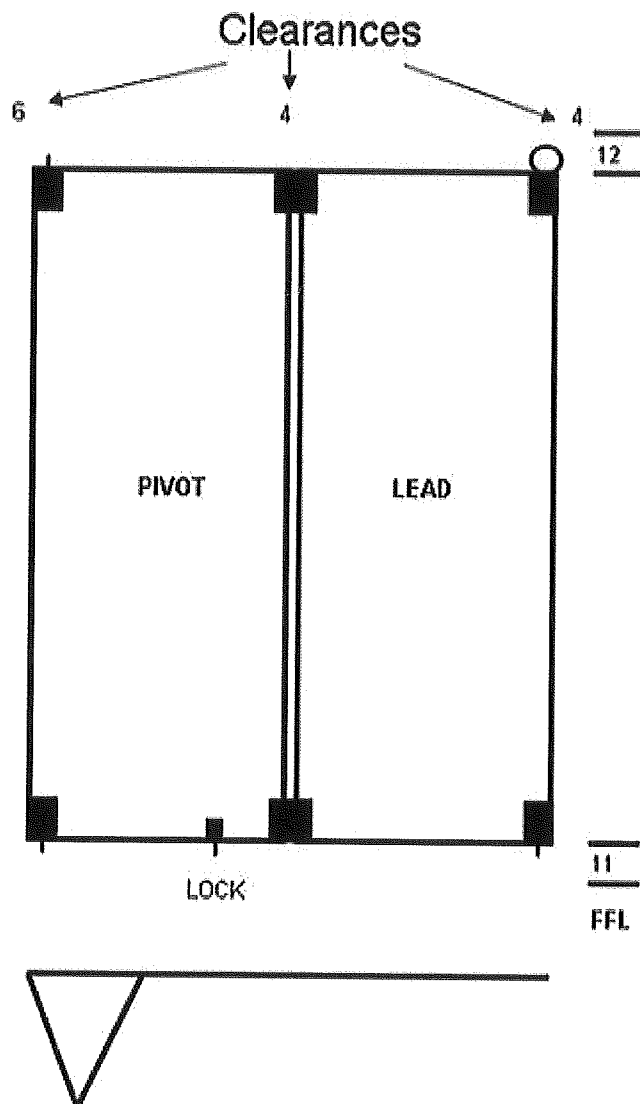
The hanger wheels are fitted with double sealed precision stainless steel bearing to ensure a long life & smooth operation.

For sets with more than two panels operating an aluminium floor channel with a polypropylene insert is recessed into the floor.

Locking can either be a slide bolt type or key turn.



MF75 Glasstech  
Frameless Folding  
Door System



## To Calculate Door Widths

Finished Opening Width  
 Less Door Clearance -14mm  
 Less Pivot & Lead Door -24mm

Divide Net Figure 2 = 'D'  
 'D' + 6mm = Pivot Door Width  
 'D' + 18mm = Lead Door Width

## To Calculate Door Height

Finished Opening Height Less 73mm

## Hardware Required:

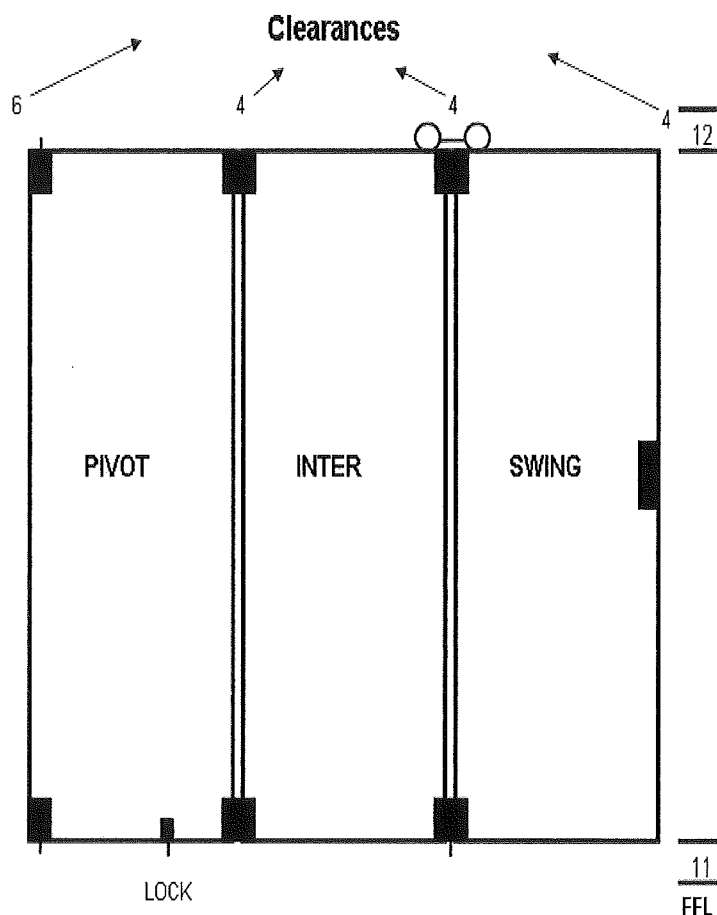
1 x MF75 Top Track  
 2 x MF75 Hinges  
 1 x MF75 End Bottom Guide  
 1 x MF75 Bottom Lock Bolt

1 x MF75 Top & Bottom Pivot Set  
 2 x MF75 End Hanger  
 1 x MF75 Bottom Channel



# MF75 FOLDING DOOR SETOUT DETAIL

## 3 DOOR SET



### To Calculate Door Widths

Finished Opening Size

Less Door Clearance -18mm

Less Pivot Door Extension -6mm

Divide Net Figure By 3 = 'D'

'D' is the width of the intermediate & Swing doors.

'D'+6mm = Pivot Door Width

### To Calculate Door Height

Finished Opening Height Less 73mm



### Hardware Required:

1 x MF75 Top Track

2 x MF75 Hinges

1 x MF75 Intermediate Bottom Guide

1 x MF75 Bottom Lock Bolt

1 x MF75 Top & Bottom Pivot Set

1 x MF75 Intermediate Hanger

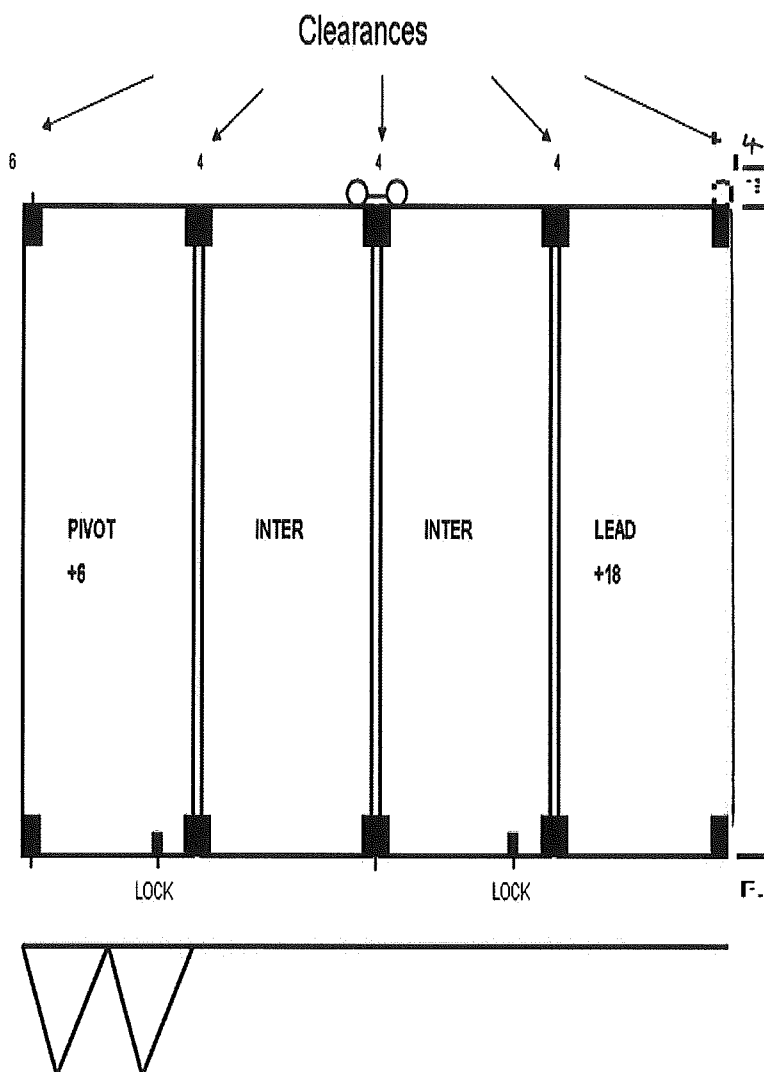
1 x MF75 Bottom Channel

1 x Lock for Swing Door



# MF75 FOLDING DOOR SETOUT DETAIL

## 4 DOOR SET



## To Calculate Door Widths

Finished Opening Size  
 Less Door Clearance -22mm  
 Less Pivot & Lead Door -24mm  
 Extensions

Divide Net Figure By 4 = 'D'

"D" is the width of the Intermediate Doors

"D" + 6 equals Pivot Door

"D" + 18 equals Lead Door

## To Calculate Door Height

Finished Opening Height Less 73mm

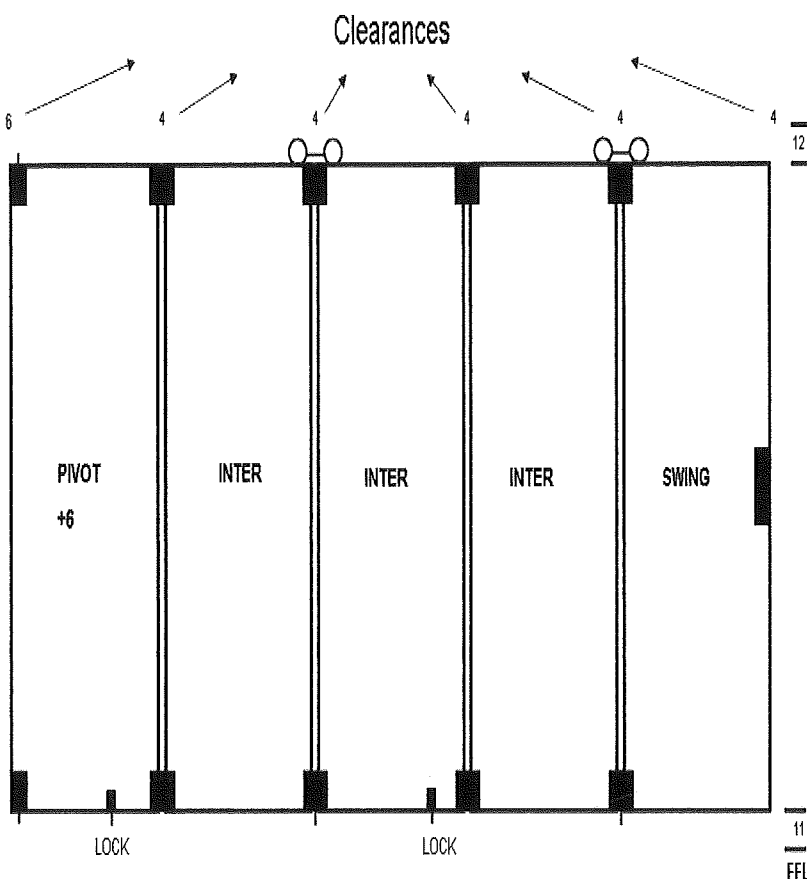
## Hardware Required:

- |                                    |                                 |
|------------------------------------|---------------------------------|
| 1 x MF75 Top Track                 | 1 x MF75 Top & Bottom Pivot Set |
| 4 x MF75 Hinges                    | 1 x MF75 Intermediate Hanger    |
| 1 x MF75 End Hanger                | 1 x MF75 Bottom Channel         |
| 1 x MF75 Intermediate Bottom Guide | 1 x MF75 End Bottom Guide       |
| 2 x MF75 Bottom Bolt Lock          |                                 |



# MF75 FOLDING DOOR SETOUT DETAIL

5 DOOR SET



## To Calculate Door Widths

Finished Opening Size  
 Less Door Clearance -26mm  
 Less Pivot Door Extension -6mm

Divide Net Figure By 5 = 'D'  
 "D" is the width of the Intermediate Doors  
 "D" + 6 equals Pivot Door

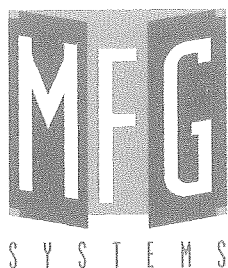
## To Calculate Door Height

Finished Opening Height Less 73mm

## Hardware Required:

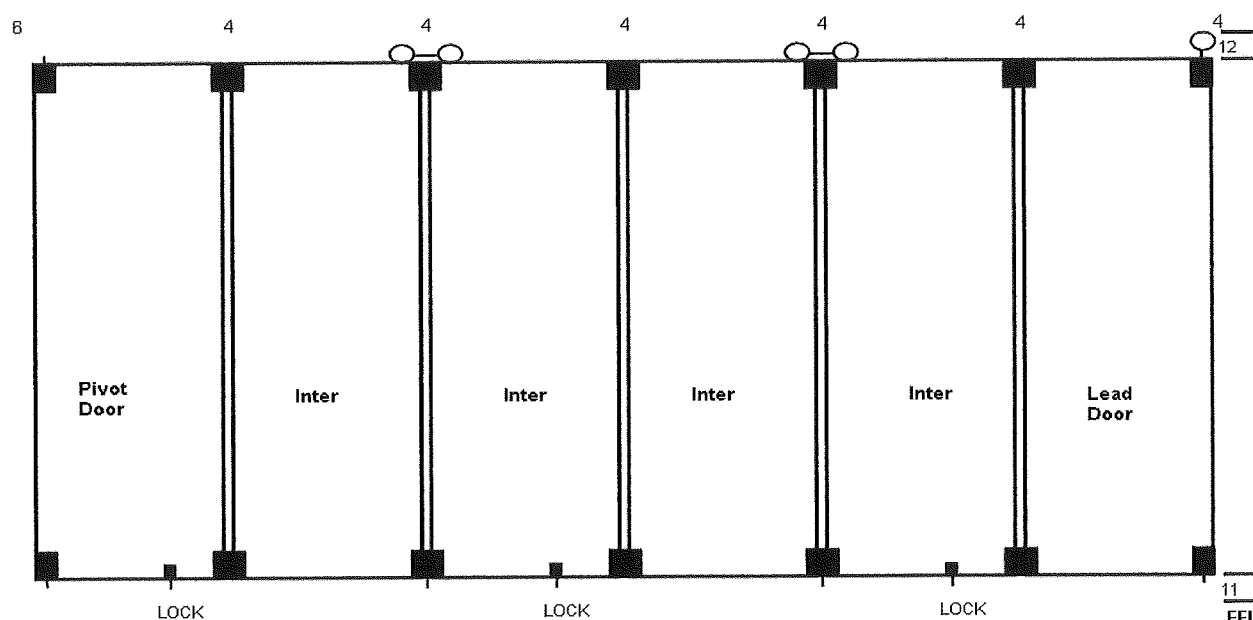
1 x MF75 Top Track  
 4 x MF75 Hinges  
 1 x MF75 Bottom Channel  
 2 x MF75 Bottom Bolt Lock

1 x MF75 Top & Bottom Pivot Set  
 2 x MF75 Intermediate Hanger  
 2 x MF75 Intermediate Bottom Guide  
 1 x Lock For Swing Door



# MF75 FOLDING DOOR SETOUT DETAIL

## 6 DOOR SET



### To Calculate Door Widths

Finished Opening Size

Less Door Clearance -30mm

Less Pivot & Lead Door Extension -24mm

Divide Net Figure By 6 = 'D'

"D" is the width of the Intermediate Doors

"D" + 6 = Pivot Door Width

"D" + 18 = Lead Door Width

### To Calculate Door Height

Finished Opening Height Less 73mm

### Hardware Required:

1 x MF75 Track

6 x MF75 Hinges

1 x MF75 End Hanger

2 x MF75 Intermediate Bottom Guide

3 x MF75 Bottom Lock Bolt

1 x MF75 Top & Bottom Pivot Set

2 x MF75 Intermediate Hanger

1 x MF75 Bottom Channel

1 x MF75 End Bottom Guide



S Y S T E M S

## METRO FRAMELESS GLASS SYSTEMS

Unit O, 35 Maurice Road, Penrose

PO Box 112 186, Penrose, Auckland, New Zealand

Phone 09 622 2643 Fax 09 622 2648

Website [www.metroframeless.co.nz](http://www.metroframeless.co.nz)

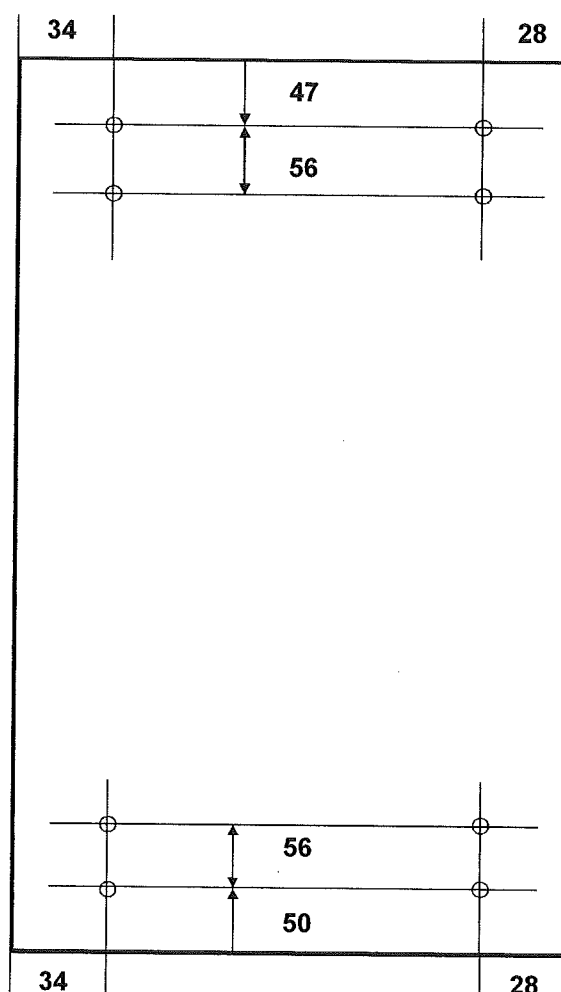
## Glass Order Sheet

## MF75 Jamb Pivot Panel

Customer Name

Order Number

Date Ordered \_\_\_\_ / \_\_\_\_ / \_\_\_\_

**10mm Clear Toughened****Flat Polish All Edges****TFA as Marked****8 x 16mm Diameter Holes****Please list special  
instructions below****Metropolitan Glass Office Use**

EDI No. \_\_\_\_\_ Diagram Reference No: \_\_\_\_\_

Delivery Date

\_\_\_\_ / \_\_\_\_ / \_\_\_\_





# METRO FRAMELESS GLASS SYSTEMS

Unit O, 35 Maurice Road, Penrose  
PO Box 112 186, Penrose, Auckland, New Zealand  
Phone 09 622 2643 Fax 09 622 2648  
Website [www.metroframeless.co.nz](http://www.metroframeless.co.nz)

## Glass Order Sheet

### MF75 Intermediate Panel

Customer Name

Order Number

Date Ordered \_\_\_\_ / \_\_\_\_ / \_\_\_\_

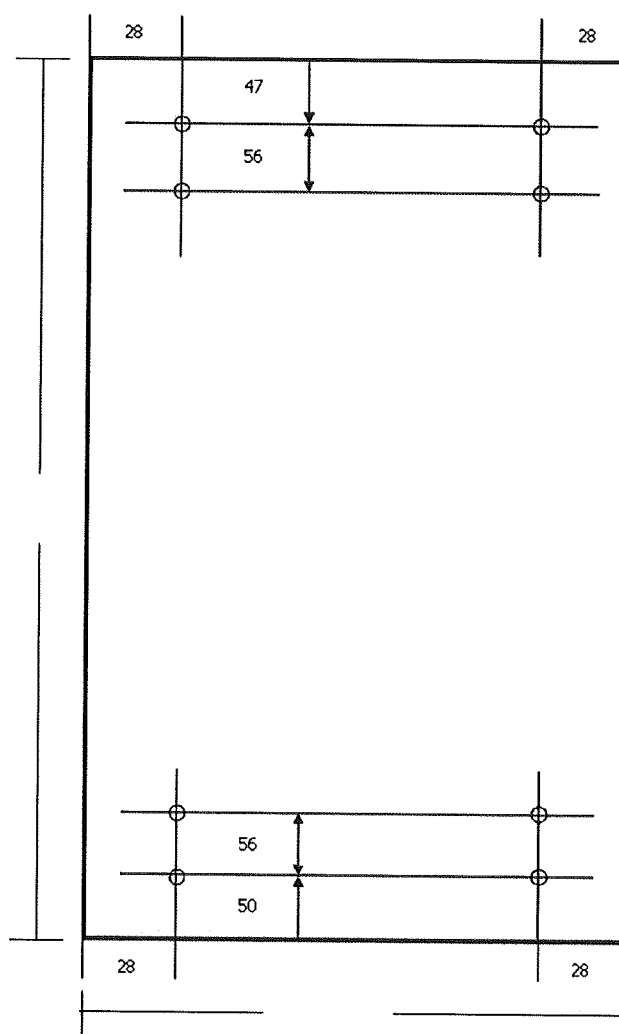
**10mm Clear Toughened**

**Flat Polish All Edges**

**TFA as Marked**

**8 x 16mm Diameter Holes**

**Please list special  
instructions below**



#### Metropolitan Glass Office Use

EDI No. \_\_\_\_\_ Diagram Reference No:

Delivery Date

\_\_\_\_ / \_\_\_\_ / \_\_\_\_



# METRO FRAMELESS GLASS SYSTEMS

Unit O, 35 Maurice Road, Penrose  
PO Box 112 186, Penrose, Auckland, New Zealand  
Phone 09 622 2643 Fax 09 622 2648  
Website [www.metroframeless.co.nz](http://www.metroframeless.co.nz)

## Glass Order Sheet

### MF75 Lead Panel (For EVEN number of doors)

Customer Name

Order Number

Date Ordered \_\_\_\_ / \_\_\_\_ / \_\_\_\_

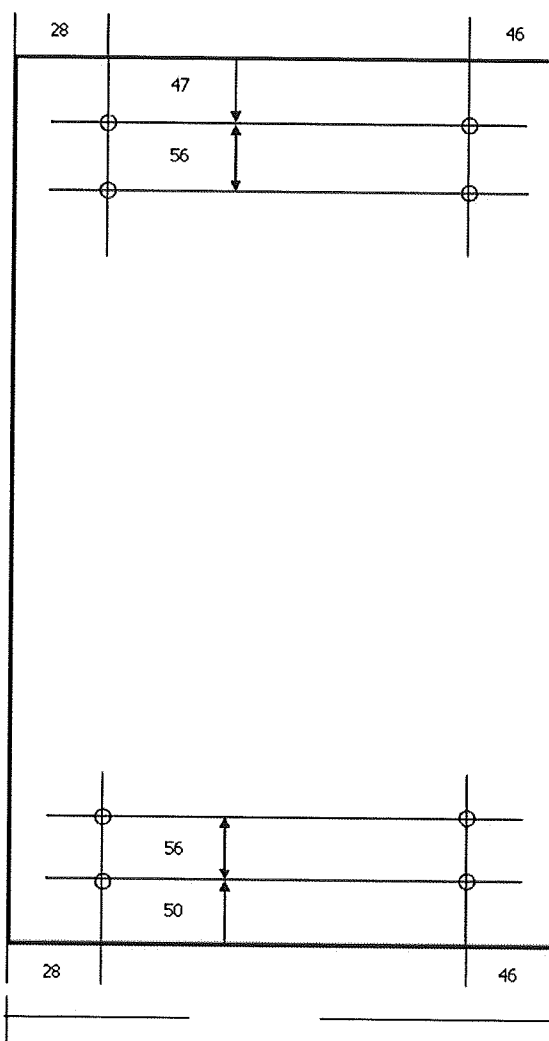
**10mm Clear Toughened**

**Flat Polish All Edges**

**TFA as Marked**

**8 x 16mm Diameter Holes**

**Please list special  
instructions below**



#### Metropolitan Glass Office Use

EDI No. \_\_\_\_\_ Diagram Reference No: \_\_\_\_\_

Delivery Date

\_\_\_\_ / \_\_\_\_ / \_\_\_\_



# METRO FRAMELESS GLASS SYSTEMS

Unit O. 35 Maurice Road, Penrose  
PO Box 112 186, Penrose, Auckland, New Zealand  
Phone 09 622 2643 Fax 09 622 2648  
Website [www.metroframeless.co.nz](http://www.metroframeless.co.nz)

S Y S T E M S

Glass Order Sheet

## MF75 Swing Panel ( For uneven numbers of doors)

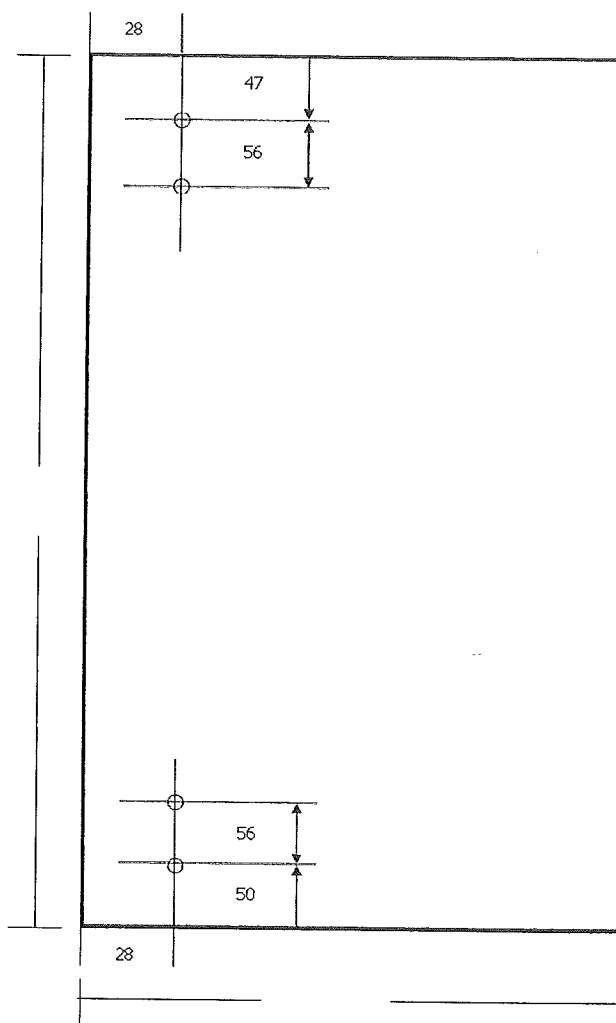
Customer Name

Order Number

Date Ordered \_\_\_\_ / \_\_\_\_ / \_\_\_\_

**10mm Clear Toughened**  
**Flat Polish All Edges**  
**TFA as Marked**  
**4 x 16mm Diameter Holes**

**Please list special  
instructions below**



### Metropolitan Glass Office Use

EDI No. \_\_\_\_\_ Diagram Reference No:

Delivery Date

\_\_\_\_ / \_\_\_\_ / \_\_\_\_