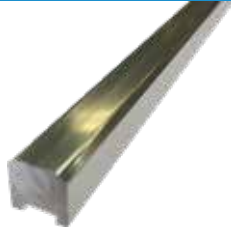
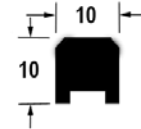


FRAMELESS GLASS BATHROOM HARDWARE

MWS3
MWS3-1M



Product Image



Dimensions

DETAILS

Square Waterbar

- 10mm x 10mm x 2500mm for Polished SilverAnodised
- 10mm x 10mm x 1000mm for other finishes to match shower hardware
- Due to the base material of the MWS3-1M being brass, when it is cut to length the end should be sealed to prevent peeling of the finish over time

FINISHES

- Natural Anodised (MWS3)
 - Polished Silver Anodised (MWS3)
 - Polished & Satin Chrome
 - Polished & Satin Gold
 - Matt Black (MWS3 & MWS3-1m)
 - Brushed Nickel
- Base Material: Aluminium/Brass