

## FRAMELESS GLASS ANCHOR FIXINGS SUBSECTION INDEX

**2.1 Uncovered / Covered Countersunk Bushes**

**2.2 Double Button Head & Thread**

**Button Head & Thread**

**Button Head & Lagscrew**

**2.3 Covered Countersunk / Button Head Anchors**

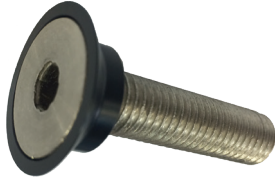
**INTENTIONALLY**

**LEFT**

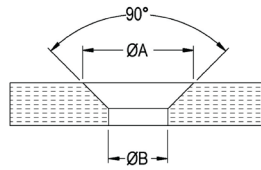
**BLANK**

## FRAMELESS GLASS ANCHOR FIXINGS

### Uncovered Csk Bushes

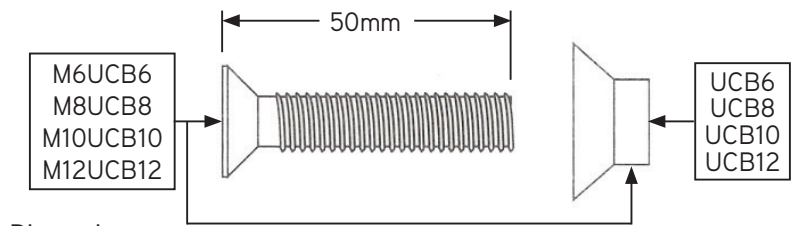


Product Image



Glass Preparation

SETSCREW & BUSH	BUSH ONLY	A	B	GLASS THICKNESS
M6UCB6	UCB6	18mm	10mm	8/10mm
M8UCB8	UCB8	20mm	12mm	8/10/12mm
M10UCB10	UCB10	24mm	16mm	8/10/12mm
M12UCB12	UCB12	28mm	18mm	10/12/15mm



Dimensions

#### DETAILS

##### 50mm Countersunk Socket Screw & Bush or Bush Only

- Also available with countersunk woodscrew
- White bush also available
- 5mm & 10mm Spacers available POA

#### FINISHES

- Black bush
- Satin socket screw

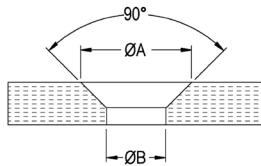
Base material:  
Nylon bush  
304 stainless steel screw

## FRAMELESS GLASS ANCHOR FIXINGS

### Covered Csk Bushes

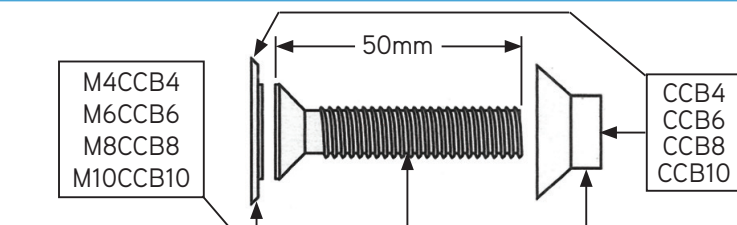


Product Image



Glass Preparation

SETSCREW, BUSH & COVER	BUSH & COVER ONLY	A	B	GLASS THICKNESS
M4CCB4	CCB4	16mm	7mm	6mm
M6CCB6	CCB6	22mm	10mm	8/10mm
M8CCB8	CCB8	26mm	14mm	8/10/12mm
M10CCB10	CCB10	30mm	18mm	10/12/15mm



Dimensions

#### DETAILS

##### 50mm Countersunk Socket Screw with Covered Bush or Covered Bush Only

- Also available with countersunk woodscrew
- 5mm & 10mm Spacers available POA

#### FINISHES

- Black bush
- Satin socket screw

Base material:  
Nylon bush  
304 stainless steel screw

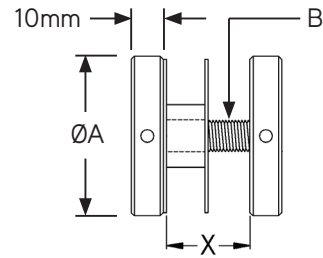
**Double Button  
Head & Thread****FRAMELESS GLASS ANCHOR FIXINGS**

Product Image

Glass Preparation

PRODUCT CODE	A	B	Ø GLASS HOLE
DB19-X	19mm	M6	10mm
DB25-X	25mm		
DB32-X	32mm	M8	12mm
DB38-X	38mm	M10	20mm
DB50-X	50mm		

Dimensions

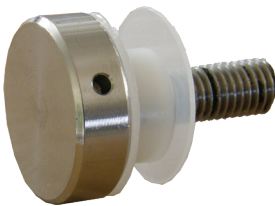
**DETAILS**Double Button Head & Thread

- "X" in code is required length of thread between button heads when tightened
- Supplied with plastic sleeve & 2 nylon washers
- 5mm & 10mm Spacers available (POA)
- Thread (B) in table can be supplied in alternate size by request (POA)
- Email [luke.pritchard@mfgs.com.au](mailto:luke.pritchard@mfgs.com.au) to order

**FINISHES**

- Polished
- Satin

Base material:  
304 or 316 Stainless Steel  
Plastic Sleeve  
Nylon Washers

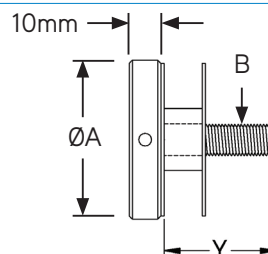
**Button Head  
& Thread****FRAMELESS GLASS ANCHOR FIXINGS**

Product Image

Glass Preparation

PRODUCT CODE	A	B	Ø GLASS HOLE
BT19-Y	19mm	M6	10mm
BT25-Y	25mm		
BT32-Y	32mm	M8	12mm
BT38-Y	38mm	M10	20mm
BT50-Y	50mm		

Dimensions

**DETAILS**Button Head & Thread

- "Y" in code is required length of threaded rod from button head.
- Stock length of threaded rod is 18mm
- Supplied with plastic sleeve & 2 nylon washers
- 5mm & 10mm Spacers available (POA)
- Thread (B) in table can be supplied in alternate size by request (POA)
- Email [luke.pritchard@mfgs.com.au](mailto:luke.pritchard@mfgs.com.au) to order

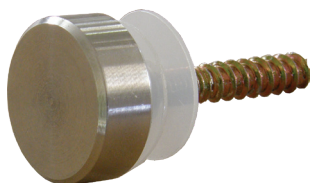
**FINISHES**

- Polished
- Satin

Base material:  
304 or 316 Stainless Steel  
Plastic Sleeve  
Nylon Washers

## FRAMELESS GLASS ANCHOR FIXINGS

### Button Head & Lagscrew

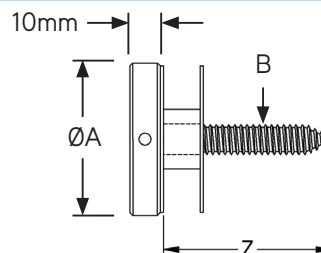


Product Image

Glass Preparation

PRODUCT CODE	A	B	Z MINIMUM	Ø GLASS HOLE
BL19-Z	19mm	M6	25mm	10mm
BL25-Z	25mm			
BL32-Z	32mm	M8	30mm	12mm
BL38-Z	38mm	M10	50mm	20mm
BL50-Z	50mm			

Dimensions



#### DETAILS

##### Button Head & Lag Screw

- Replace "Z" in code with required length of lag screw from button head
- Supplied with plastic sleeve & 2 nylon washers
- Maximum lag screw length 55mm for M6 & M8
- 5mm & 10mm Spacers available (POA)
- Lagscrew (B) in table can be supplied in alternate size by request (POA)
- Email [manufactured@mfgs.com.au](mailto:manufactured@mfgs.com.au) to order

#### FINISHES

- Polished
- Satin

Base material:  
304 or 316 Stainless Steel  
Plastic Sleeve  
Nylon Washers

## FRAMELESS GLASS ANCHOR FIXINGS

### MB19S



Product Image

Glass Preparation

Glass Hole Size Ø10mm

Dimensions

19mm Dia x 6mm Button Head with Countersunk Bush

#### DETAILS

##### 19mm Buttonhead with Bush & Screw

- Includes plastic washers, tube & 45mm long screw

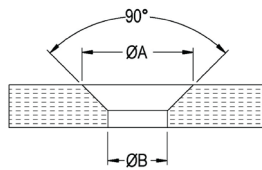
#### FINISHES

- Satin

Base material:  
316 Stainless Steel  
Plastic Bush

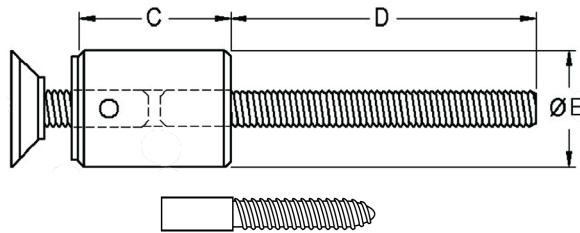
**Covered Csk  
Anchors****FRAMELESS GLASS ANCHOR FIXINGS**

Product Image



Glass Preparation

PRODUCT CODE	BUSH	A	B	C	D	E
GSCC-19x25	CCB6	22mm	10mm	25mm	M6 x 50mm	19mm
GSCC-19x50				50mm		
GSCC-25x25				25mm		25mm
GSCC-25x50				50mm		
GSCC-32x25	CCB8	26mm	14mm	25mm	M8 x 50mm	32mm
GSCC-32x50				50mm		



Dimensions

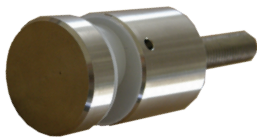
**DETAILS**Covered Countersunk Anchors

- Also available with 25mm Lagscrew
- Various fixings available including flat washers, spring washers, hex nuts, dome nuts, spring toggles, hollow wall anchors, masonry anchors.
- 5mm & 10mm Spacers available (POA)
- Thread (D) in table can be supplied in alternate size by request (POA)
- Email [luke.pritchard@mfgs.com.au](mailto:luke.pritchard@mfgs.com.au) to order custom sizes

**FINISHES**

- Black bush
- Translucent Washer
- Polished SS
- Satin SS

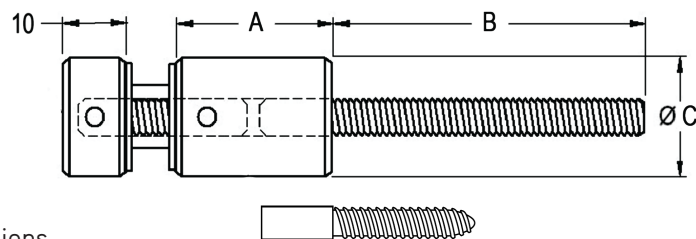
Base material:  
Nylon bush & Washer  
304 stainless steel

**Button Head  
Anchors****FRAMELESS GLASS ANCHOR FIXINGS**

Product Image

Glass Preparation

PRODUCT CODE	Ø GLASS HOLE	A	B	C
GSBH-19x25	10mm	25mm	M6 x 50mm	19mm
GSBH-19x50		50mm		
GSBH-25x25		25mm		25mm
GSBH-25x50		50mm		
GSBH-32x25	12mm	25mm	M8 x 50mm	32mm
GSBH-32x50		50mm		



Dimensions

**DETAILS**Button Head Anchors

- Also available with 25mm Lagscrew
- 5mm & 10mm Spacers available (POA)
- Thread (B) in table can be supplied in alternate size by request (POA)
- Email [luke.pritchard@mfgs.com.au](mailto:luke.pritchard@mfgs.com.au) to order custom sizes

**FINISHES**

- Translucent Washers
- Polished SS
- Satin SS

Base material:  
Nylon Washers  
Plastic Sleeve  
304 or 316 stainless steel