

## FRAMELESS GLASS FOLDING DOOR SYSTEMS INDEX

### **5.1 Metro MF75**

### **5.2 GCC Frameless Glass Folding Door Systems**

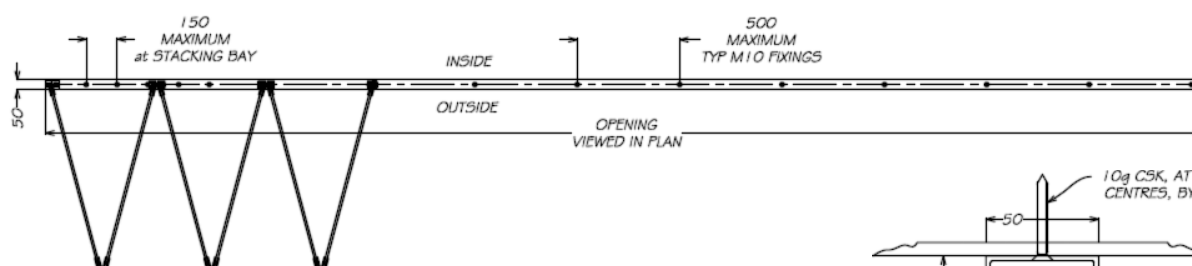
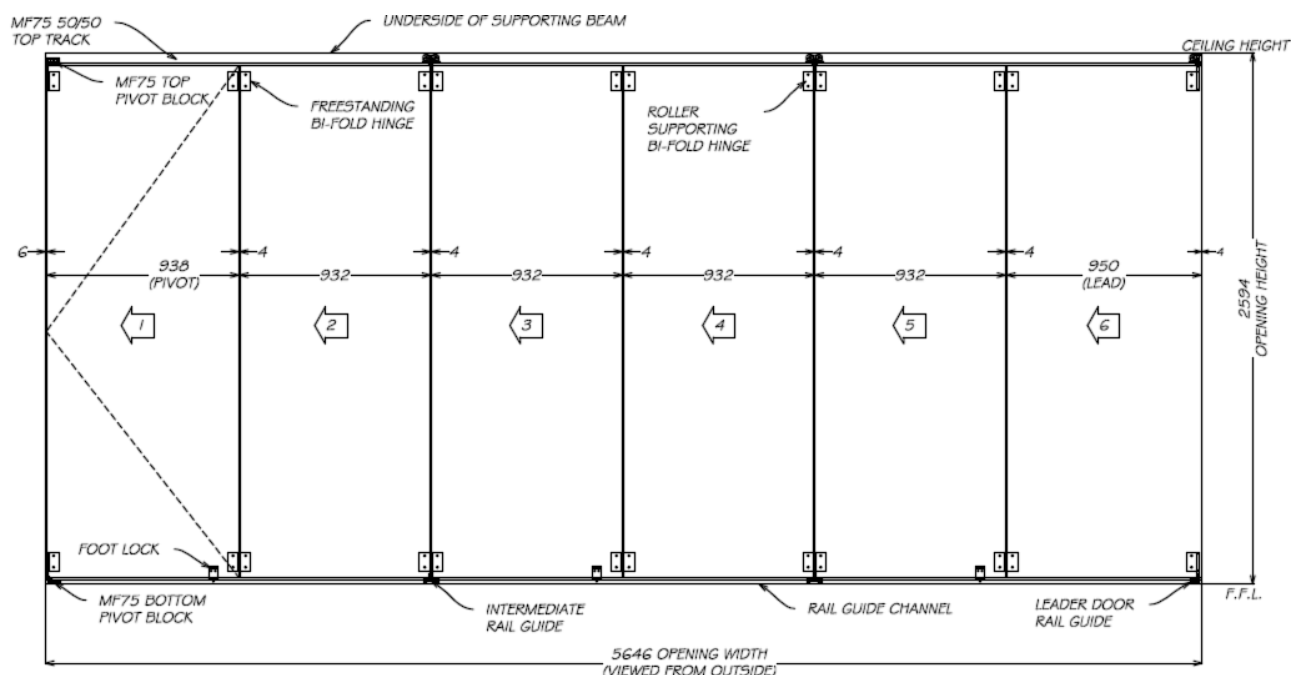
### **5.3 Austvision Folding Door Systems**

**INTENTIONALLY**

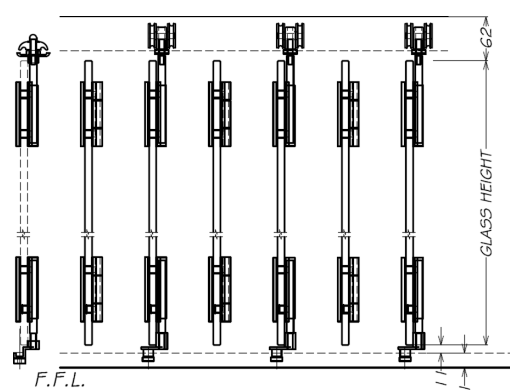
**LEFT**

**BLANK**

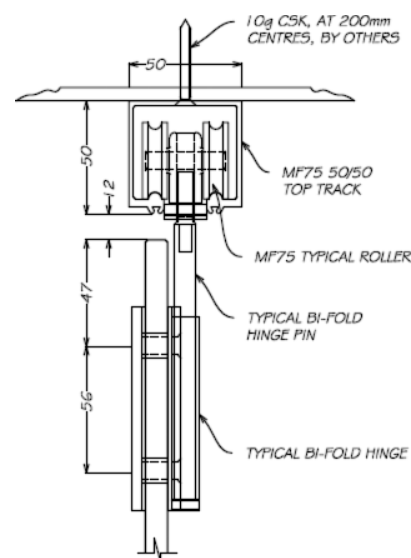
# FRAMELESS GLASS FOLDING DOOR SYSTEMS

**MF75-2/3/4/5/6**


1 TYPICAL SYSTEMS SCHEMATICS  
SCALE: NTS



3 STACKING PROFILE  
SCALE: NTS



2 TOP RAIL SECTION  
SCALE: NTS

## DETAILS

### Metro MF75 Internal Folding Door Kits

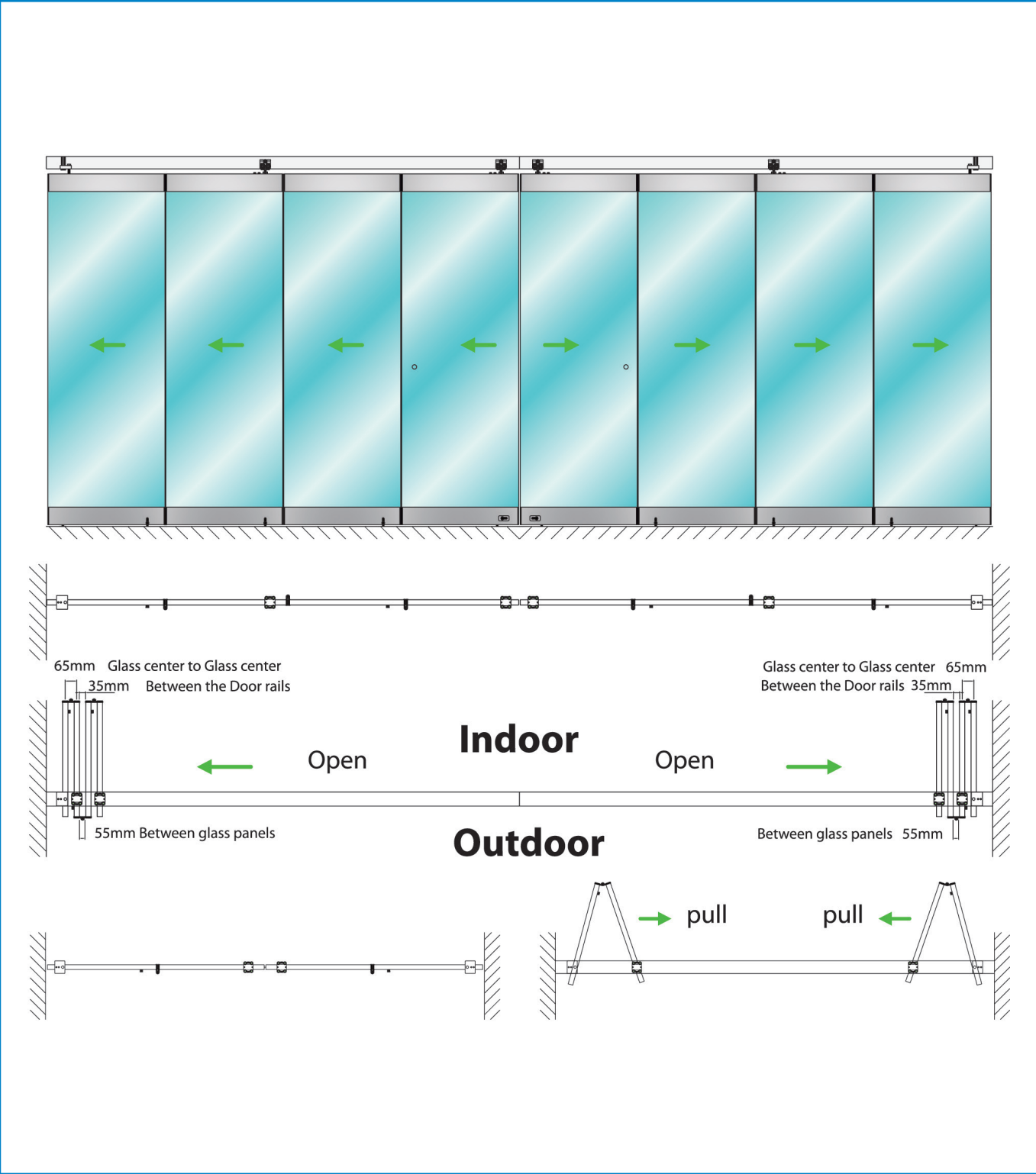
- 75kg weight capacity for 10mm toughened glass 2700mm H x 950mm W
- Each kit contains: Top Track, Roller Hangers, Pivot Set, Guide Hinges, Bottom Locks & Floor Guide Channel
- Email [luke.pritchard@mfgs.com.au](mailto:luke.pritchard@mfgs.com.au) for 2/3/4/5/6 door systems
- End door on uneven sets can be fitted with latch or lockset
- For further information please refer to download section at [www.mfgs.com.au](http://www.mfgs.com.au)

## FINISHES

- Natural Anodised Top Track & Floor Channel Guide
  - Brushed Satin Chrome Pivot Sets & Guide Hinges
- Base material:  
Aluminium Track & Floor Channel Guide  
Brass Pivot Sets & Guide Hinges

GCC SFW-DR-O

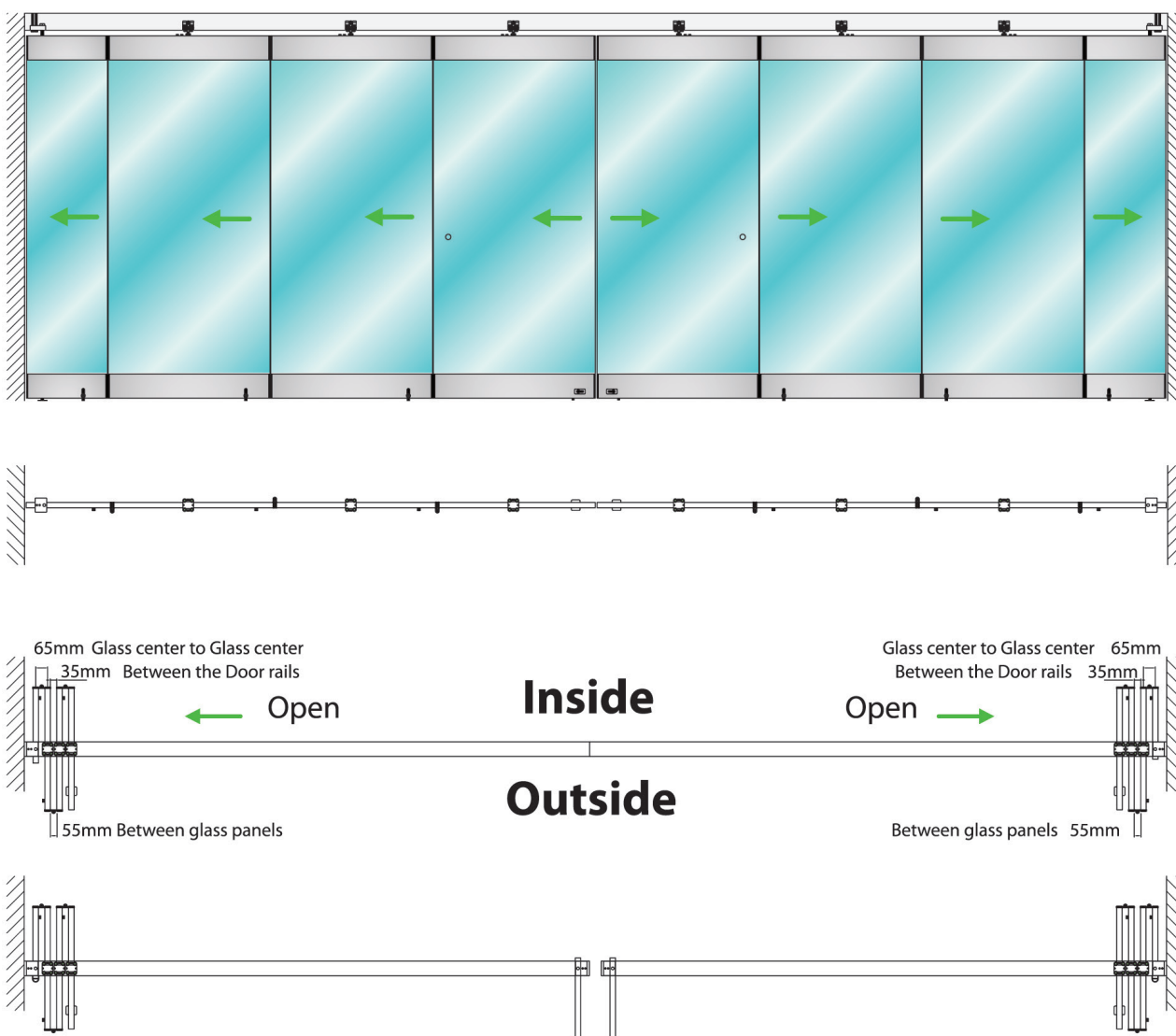
FRAMELESS GLASS FOLDING DOOR SYSTEMS



DETAILS	FINISHES
<p>GCC Frameless Glass Folding Door System with Door Rails - Offset Rollers</p> <ul style="list-style-type: none"><li>80kg weight capacity for 10 or 12mm toughened glass 3000mm H x 850mm W</li><li>Email <a href="mailto:luke.pritchard@mfgs.com.au">luke.pritchard@mfgs.com.au</a> to order or discuss your requirements</li><li>Every panel is fixed to the floor by flush bolt and last panel can be locked</li><li>If last panel is not to act as a swing door, even number of panels is required</li><li>For further information please refer to download section at <a href="http://www.mfgs.com.au">www.mfgs.com.au</a></li></ul>	<ul style="list-style-type: none"><li>Natural Anodised Top Track &amp; Rails</li><li>Other finishes may be available</li></ul> <p>Base material: Aluminium Track &amp; Door Rails</p>

## FRAMELESS GLASS FOLDING DOOR SYSTEMS

## GCC SFW-DR-C



### DETAILS

#### GCC Frameless Glass Folding Door System with Door Rails - Centre Rollers

- 80kg weight capacity for 10 or 12mm toughened glass 3000mm H x 1000mm W
- Email [luke.pritchard@mfgs.com.au](mailto:luke.pritchard@mfgs.com.au) to order or discuss your requirements
- First base panel width = half panel width + (65mm +/- 2mm)
- 3-8 panels are available & last panel can be one side swing with no roller
- For further information please refer to download section at [www.mfgs.com.au](http://www.mfgs.com.au)

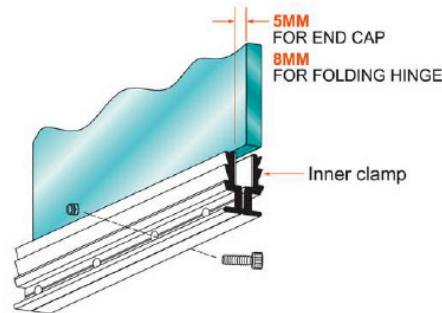
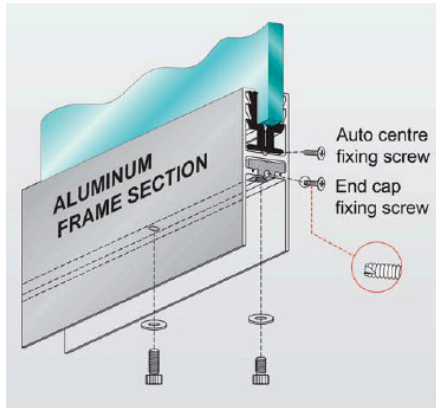
### FINISHES

- Natural Anodised Top Track & Rails
- Other finishes may be available

Base material:  
Aluminium Track & Door Rails

GCC SFW-DR  
Details

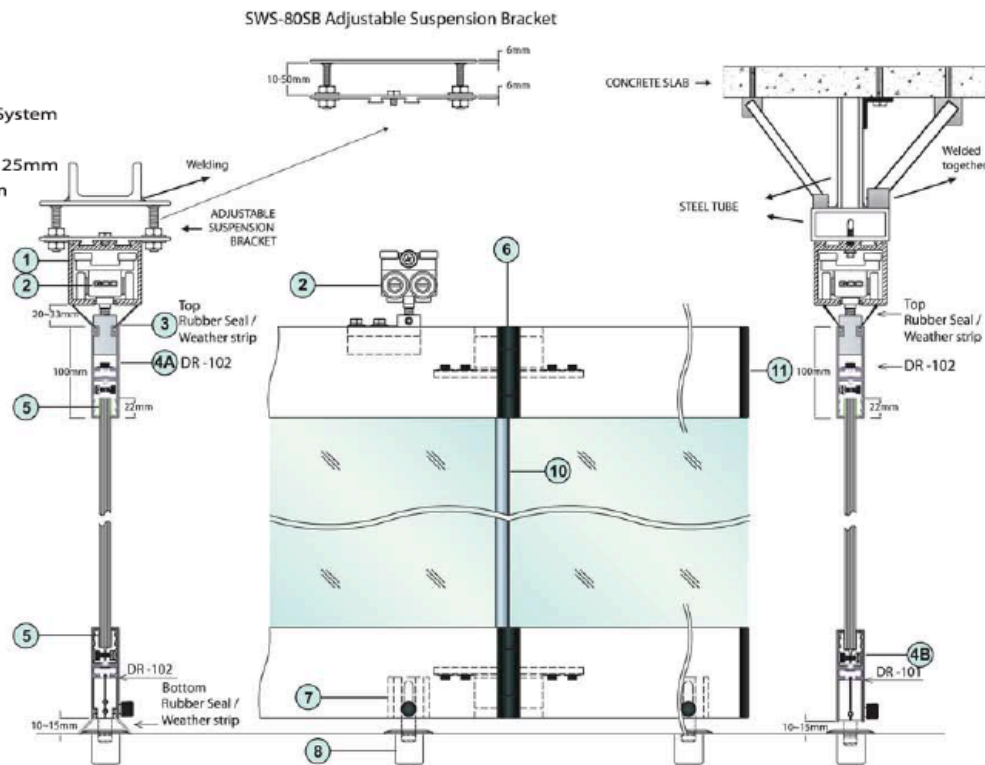
## FRAMELESS GLASS FOLDING DOOR SYSTEMS



1. **SWS -80ST**  
Sliding track for rollers
2. **FRH - 102**  
The roller hanger for SFW-DR System
3. Top Weather Strip 25mm  
Top : Rubber Seal in 20 mm or 25mm  
Bottom : Rubber Seal in 15 mm

- 4A. **DR-102**  
Main section door rail for top hanging and bottom
- 4B **DR-101**  
Main section door rail for bottom use only  
( Easy to install accessories )

5. **INNER CLAMP**
6. **FDH-102**  
Folding door hinge with fixing blocks.
7. **DFB - 102S**  
Side Flush Bolt for DR - 102
8. **9147/DR**  
Floor Socket
9. **9150**  
Adjustable free pivot for first panel
10. **PU10/12 BS**  
Bubble seal plastic strip for protecting glass and seal the gap.
11. End Cap.



\* For door rail information , please refer to GCC Door Rails catalogue.

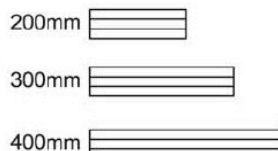
For 10mm Glass



For 12mm Glass



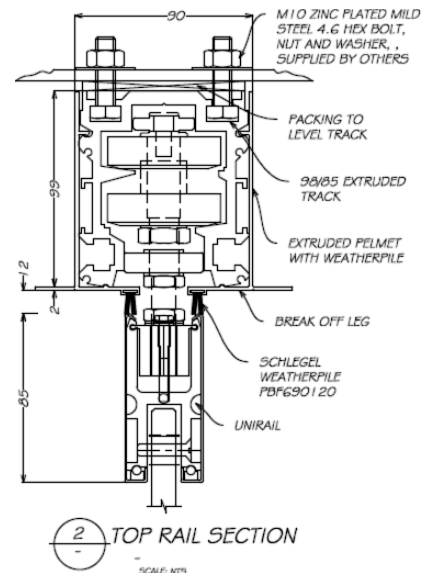
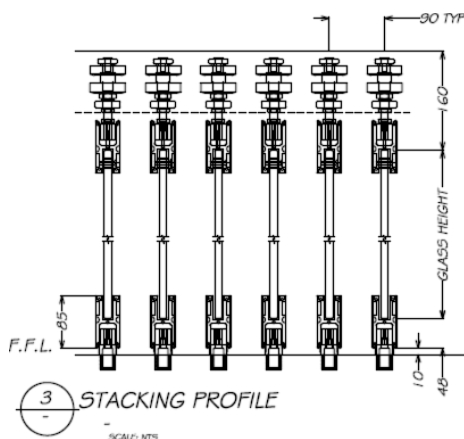
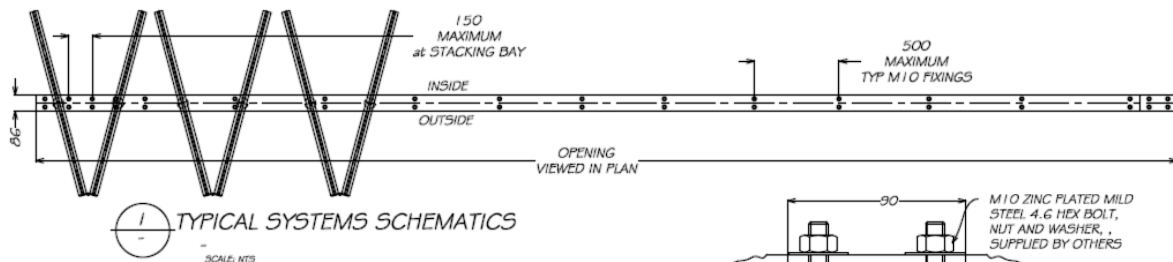
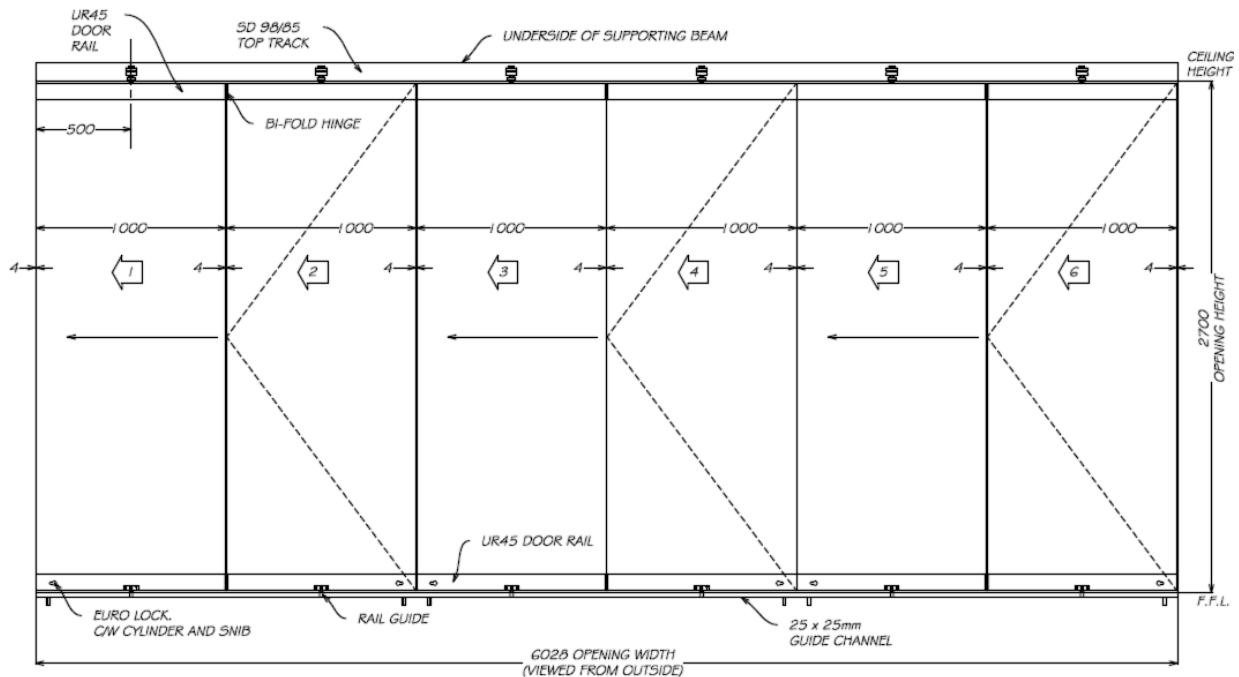
Inner Clamp  
Length :



- \* Clean up the glass on both edges for clamps.
- \* Put the clamp on the glass and make sure edge to edge.
- \* Tighten each bolts and nuts levelly.

# FRAMELESS GLASS FOLDING DOOR SYSTEMS

## Austvision Bi-Fold (Rail)



### DETAILS

#### Austvision Bifold Doors with Rails

- For heavy duty commercial applications up to 3m maximum opening height
- A maximum of 15mm toughened, heat soaked glass can be supported
- Austvision frameless door systems feature innovative dual nylon wheels in the roller carriages for better weight distribution and stability.
- Email [luke.pritchard@mfgs.com.au](mailto:luke.pritchard@mfgs.com.au) to order or discuss your requirements
- For further information please refer to download section at [www.mfgs.com.au](http://www.mfgs.com.au)

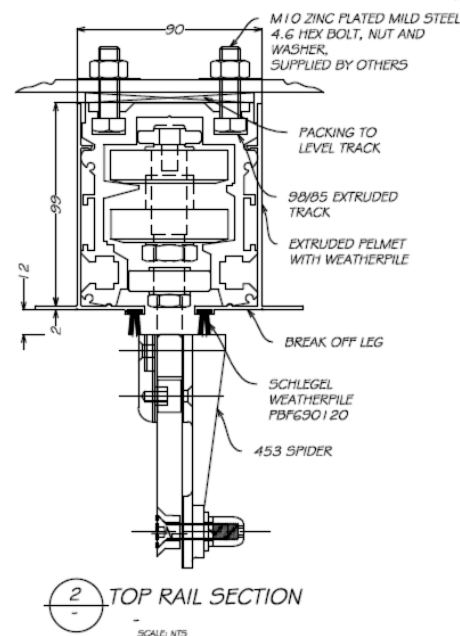
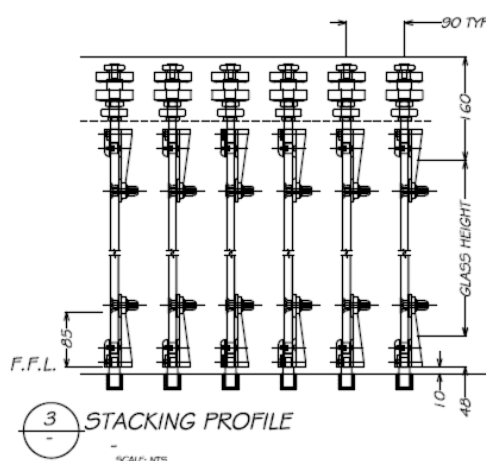
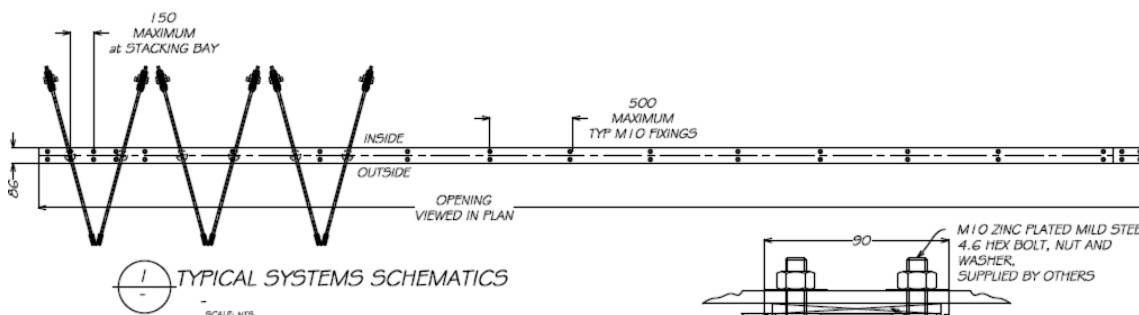
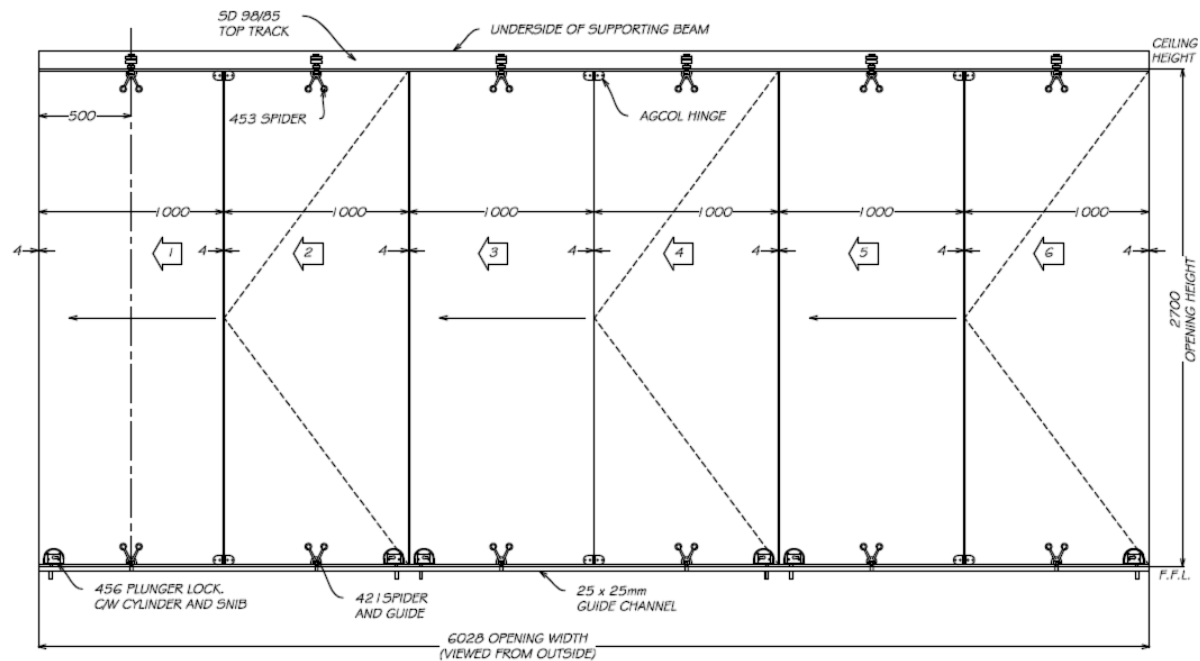
### FINISHES

- Natural Anodised Top Track
  - Polished
  - Satin
  - Other finishes may be available
- Base material:  
Stainless Steel & Aluminium Rail Covers  
Aluminium Top Track & Door Rail Body



Austvision  
Bi-Fold (Spider)

## FRAMELESS GLASS FOLDING DOOR SYSTEMS



## DETAILS

## FINISHES

## Austvision Bifold Doors with Spiders

- For heavy duty commercial applications up to 3m maximum opening height
- A maximum of 15mm toughened, heat soaked glass can be supported
- Austvision frameless door systems feature innovative dual nylon wheels in the roller carriages for better weight distribution and stability.
- Email [luke.pritchard@mfgs.com.au](mailto:luke.pritchard@mfgs.com.au) to order or discuss your requirements
- For further information please refer to download section at [www.mfgs.com.au](http://www.mfgs.com.au)

- Natural Anodised Top Track
- Polished
- Satin

Base material:  
Stainless Steel Spiders & Hinges  
Stainless & Aluminium Locks  
Aluminium Top Track