

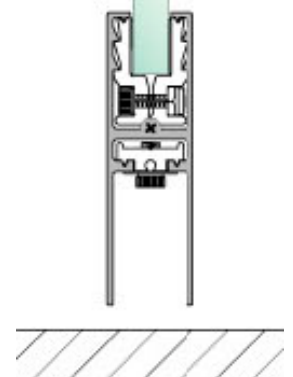
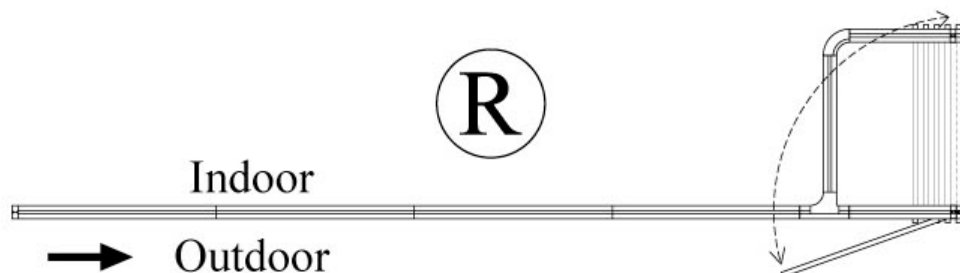
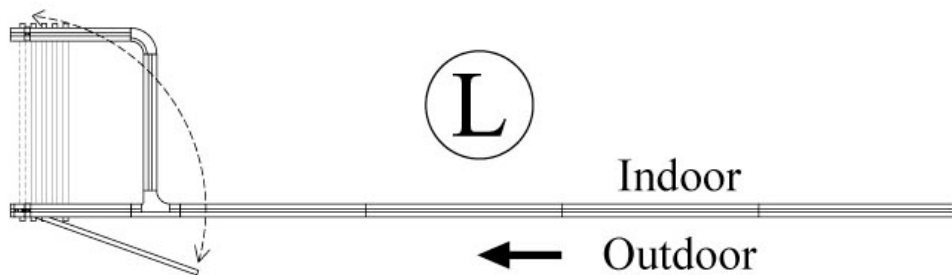
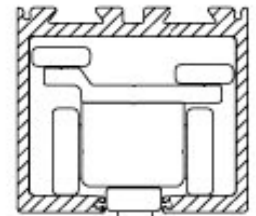
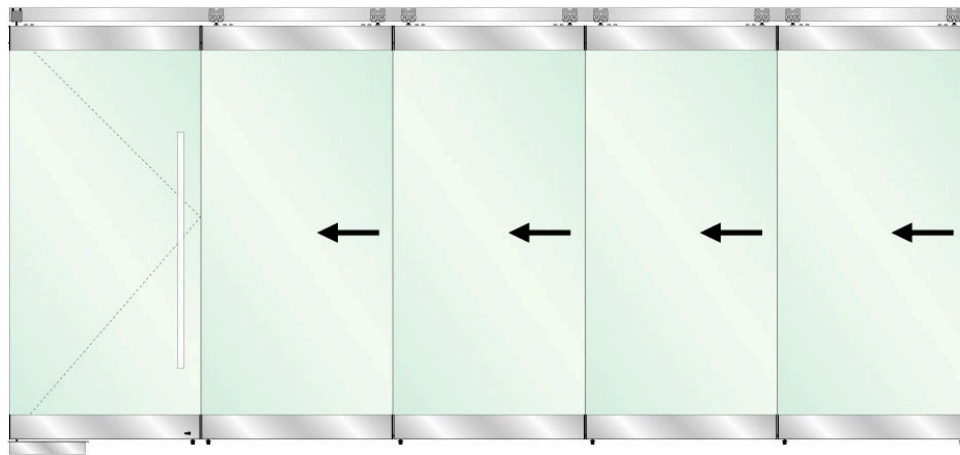
## FRAMELESS GLASS STACKING DOOR SYSTEMS INDEX

- 6.1 GCC Stacking Door Systems**
- 6.2 GEZE MSW Stacking Door System**
- 6.3 Austvision Slydstak Door System**

**INTENTIONALLY**

**LEFT**

**BLANK**

**FRAMELESS GLASS STACKING DOOR SYSTEMS**
**GCC SWS-DR**

**DETAILS**
GCC Frameless Glass Stacking Door System with Door Rails

- 150kg weight capacity for 10/12/15mm toughened glass with maximum panel size of 4000mm High x 1250mm Wide
- Email [luke.pritchard@mfgs.com.au](mailto:luke.pritchard@mfgs.com.au) to order or discuss your requirements
- For further information please refer to download section at [www.mfgs.com.au](http://www.mfgs.com.au)

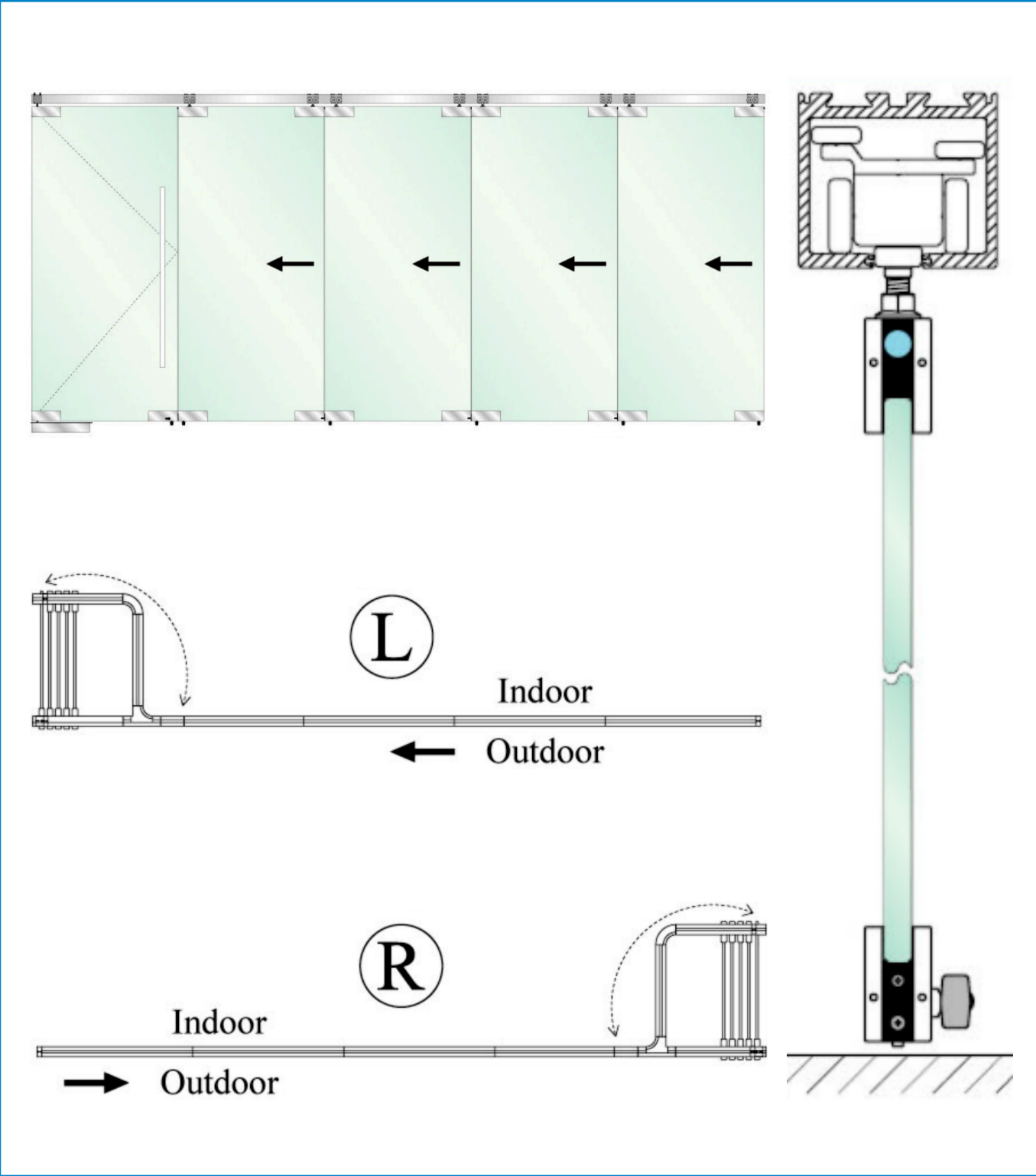
**FINISHES**

- Natural Anodised Top Track & Rails
- Other finishes may be available

Base material:  
Aluminium Track & Door Rails

GCC SWS-PF

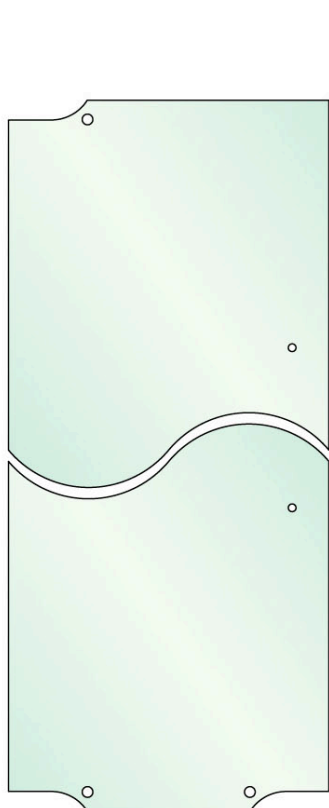
FRAMELESS GLASS STACKING DOOR SYSTEMS



DETAILS	FINISHES
<p><u>GCC Frameless Glass Stacking Door System with Patch Fittings</u></p> <ul style="list-style-type: none"><li>85kg weight capacity for 10/12/15mm toughened glass with maximum panel size of 3000mm High x 1000mm Wide</li><li>Email <a href="mailto:luke.pritchard@mfgs.com.au">luke.pritchard@mfgs.com.au</a> to order or discuss your requirements</li><li>For further information please refer to download section at <a href="http://www.mfgs.com.au">www.mfgs.com.au</a></li></ul>	<ul style="list-style-type: none"><li>Natural Anodised Top Track</li><li>Polished Stainless Patch Covers</li><li>Satin Stainless Patch Covers</li><li>Other finishes may be available</li></ul> <p>Base material: Aluminium Track &amp; Patch Bodies 304 Stainless Steel Patch Covers</p>

## FRAMELESS GLASS STACKING DOOR SYSTEMS

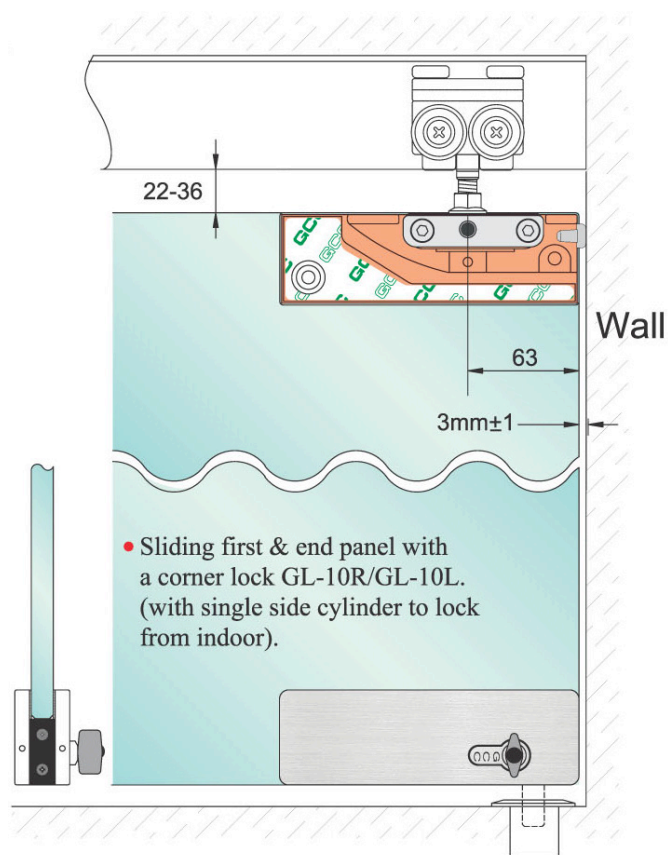
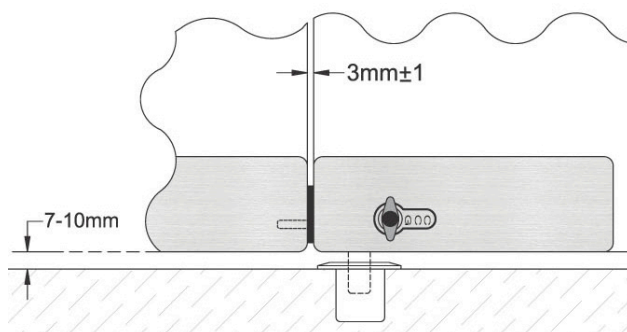
### GCC SWS-PF Glass Preparation



Swing Door Panel



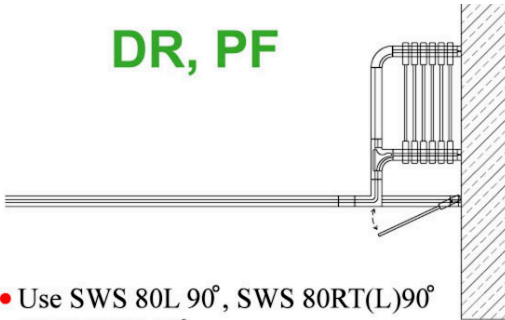
Sliding Door Panel



GCC SWS  
Parking Bays

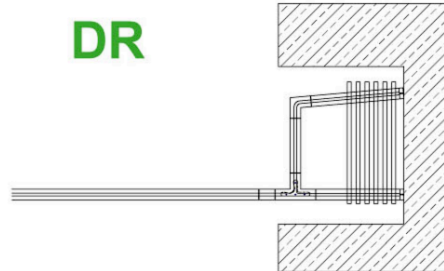
## FRAMELESS GLASS STACKING DOOR SYSTEMS

DR, PF



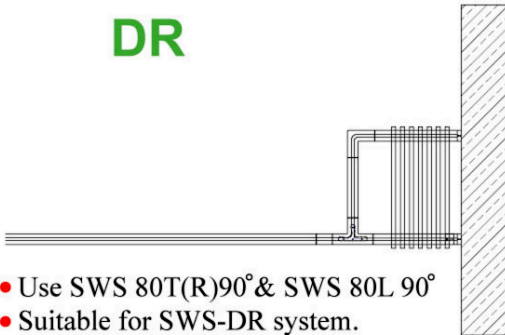
- Use SWS 80L 90°, SWS 80RT(L)90° SWS 80RL 90°.
- Suitable for SWS-DR & SWS-PF systems.

DR



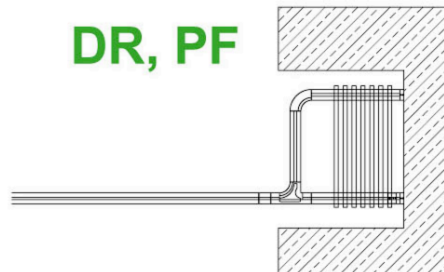
- Use SWS 80T(R)90° & SWS 80L 95°
- Suitable for SWS-DR system.

DR



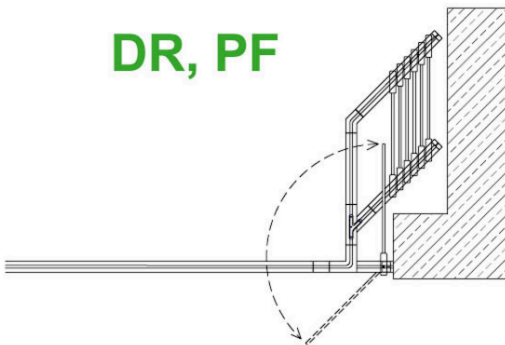
- Use SWS 80T(R)90° & SWS 80L 90°
- Suitable for SWS-DR system.

DR, PF



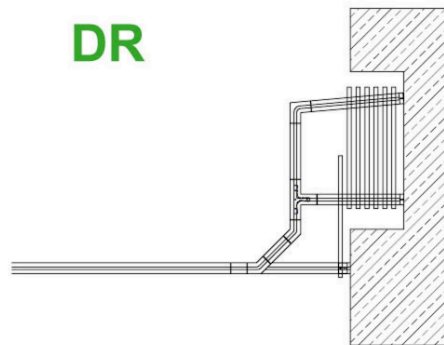
- Use SWS 80RT(R)90° & SWS 80RL90°
- Suitable for SWS-DR & SWS-PF systems.

DR, PF



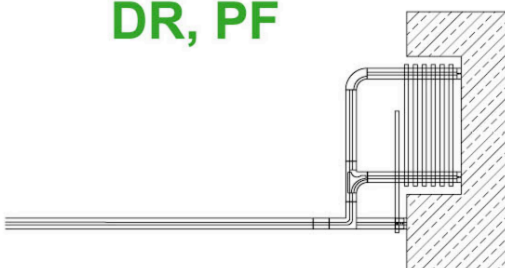
- Use SWS 80L 90° & SWS 80T(L)135° & SWS 80L 135°.
- Suitable for SWS-DR & SWS-PF systems.

DR



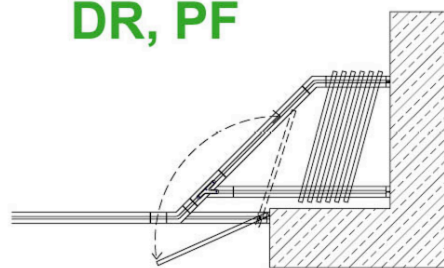
- Use SWS 80L135° & SWS 80T(L) 90° & SWS 80L 95°
- Suitable for SWS-DR system.

DR, PF

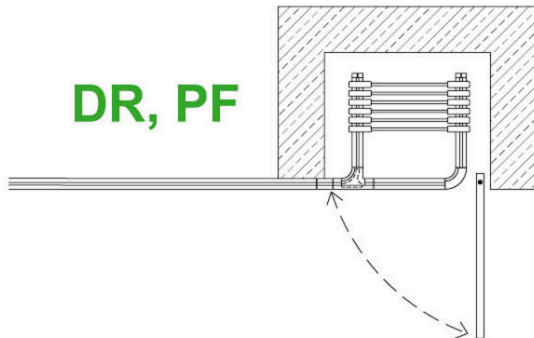


- Use SWS 80L 90°, SWS 80RT(L) 90° & SWS 80RL 90°.
- Suitable for SWS-DR & SWS-PF systems.

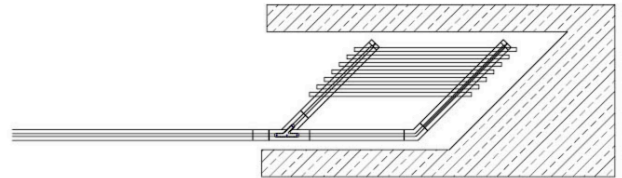
DR, PF



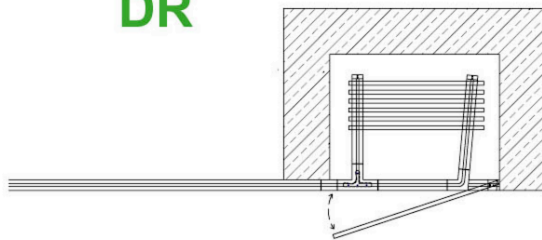
- Use SWS 80L 135°, SWS 80T(L) 135° & SWS 80L 135°
- Suitable for SWS-DR & SWS-PF systems.

**FRAMELESS GLASS STACKING DOOR SYSTEMS**
**GCC SWS  
Parking Bays**
**DR, PF**


- Use SWS 80RT(R) 90°, SWS 80RL 90°
- Suitable for SWS-DR & SWS-PF systems.

**DR, PF**


- Use SWS 80T(R) 135°, SWS 80L 135°
- Suitable for SWS-DR & SWS-PF systems.

**DR**


- Use SWS 80T(R) 90° & SWS 80L 95°
- Suitable for SWS-DR system.

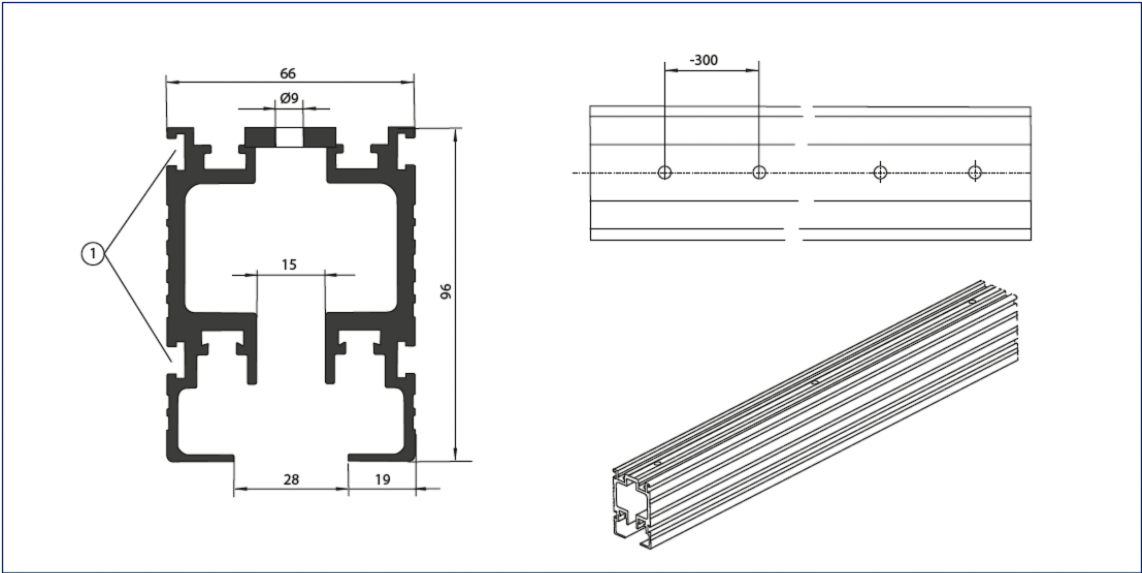
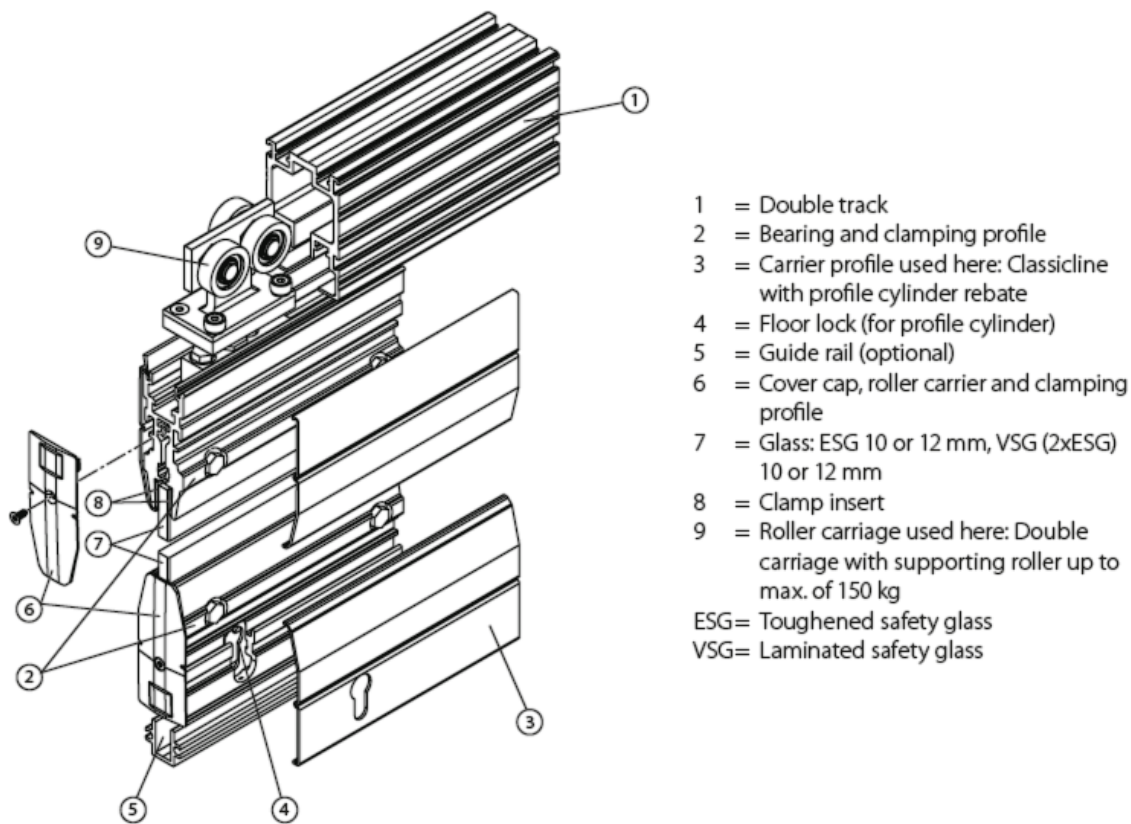
**DR**


- Use SWS 80T(R) 90°, SWS 80L 90°
- Suitable for SWS-DR system.



GEZE MSW

FRAMELESS GLASS STACKING DOOR SYSTEMS

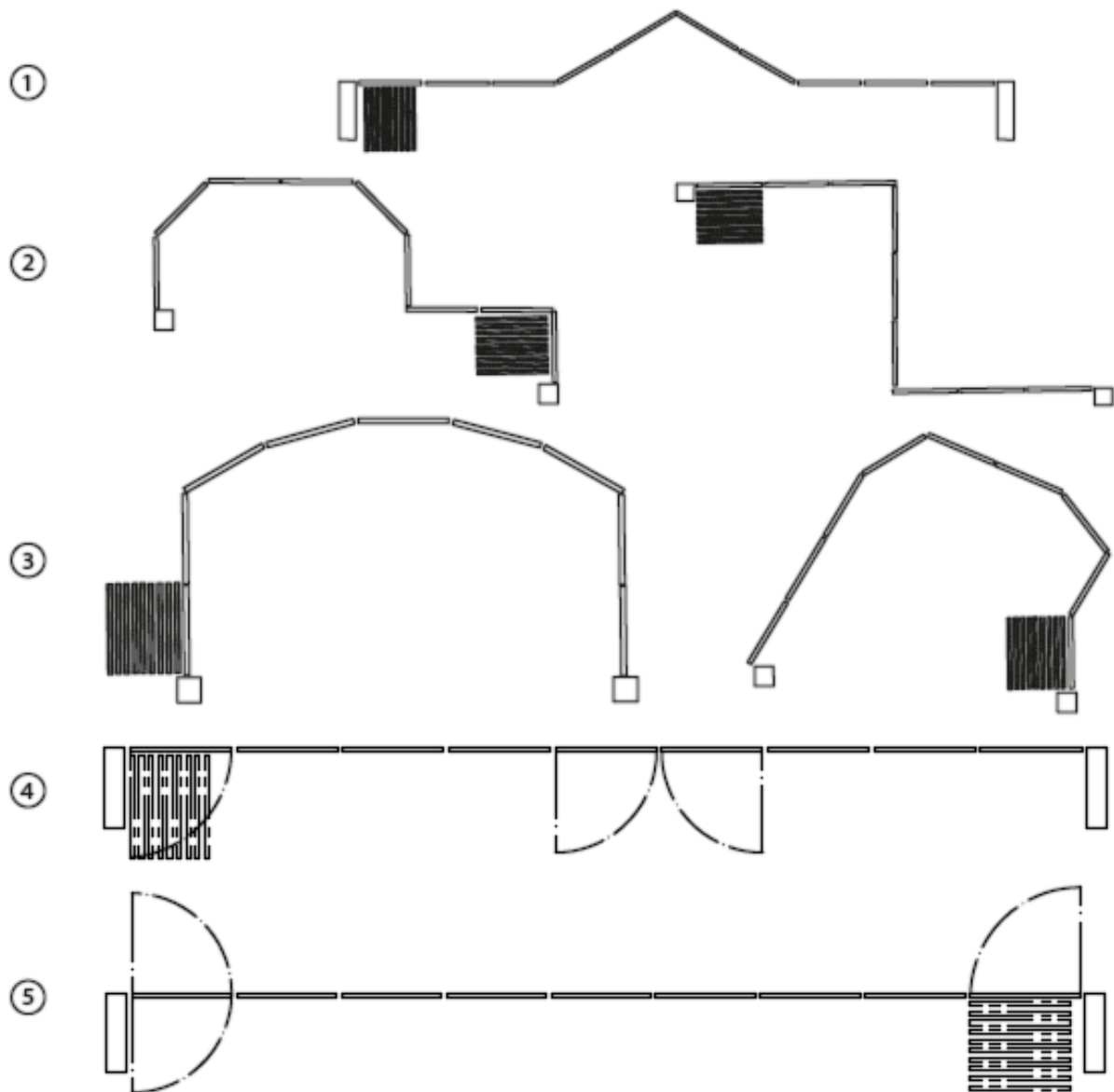


DETAILS	FINISHES
<p><u>GEZE MSW Stacking Doors</u></p> <ul style="list-style-type: none"><li>150kg weight capacity for 10/12mm toughened glass with maximum panel size of 4120mm High x 1500mm Wide</li><li>Email <a href="mailto:luke.pritchard@mfgs.com.au">luke.pritchard@mfgs.com.au</a> to order or discuss your requirements</li><li>For further information please refer to download section at <a href="http://www.mfgs.com.au">www.mfgs.com.au</a></li></ul>	<ul style="list-style-type: none"><li>Natural Anodised Top Track &amp; Rails</li><li>Other finishes may be available</li></ul> <p>Base material: Aluminium Track &amp; Door Rails</p>



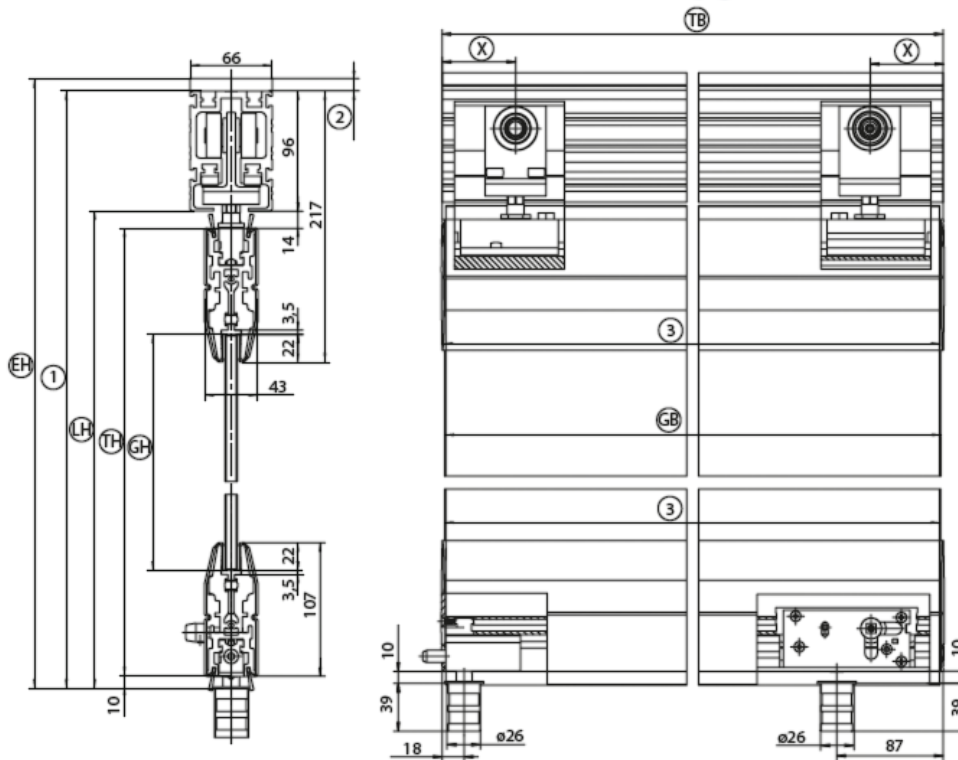
## FRAMELESS GLASS STACKING DOOR SYSTEMS

### GEZE MSW Details



#### Examples of system layouts

- 1 = Straight glass wall with directional change
- 2 = Curve layout with variable angle positions
- 3 = Free forms from wall to wall thanks to polygon layout
- 4 = Straight glass wall with 2 sliding swing doors (here sliding single-action door)
- 5 = Straight glass wall with 1 sliding swing door (here sliding double-action door)

**GEZE MSW**  
**Glass Preparation****FRAMELESS GLASS STACKING DOOR SYSTEMS**

Calculating the door height and door weight

EH = Installation height

GB = Glass width

GH = Glass height

LH = Clear height

TB = Sliding door width

TH = Door height

X = Variable dimension  $X_{max} = TB / 3$  (depending on the type of stacking area and position of the door or carriage) and additionally  $X_{max} = 167$  mm for sliding single-action door with Boxer on the hinge side

1 = System height

2 = Space adjustment (on site)

3 = Length of carrier clamping profile =  $TB - 6$

**Door height formulas:**

Door height = system height - 120 mm

**Door weight formula, with 10 mm glass:**

Door weight = door width x door height x 31 kg/m<sup>2</sup>

**Door weight formula, with 12 mm glass:**

Door weight = door width x door height x 36 kg/m<sup>2</sup>

**IGG door weight formula, with 2 x 6 mm ESG:**

Door weight = door width x door height x 34 kg/m<sup>2</sup>

Note:

The fittings are already taken into account in the calculations.

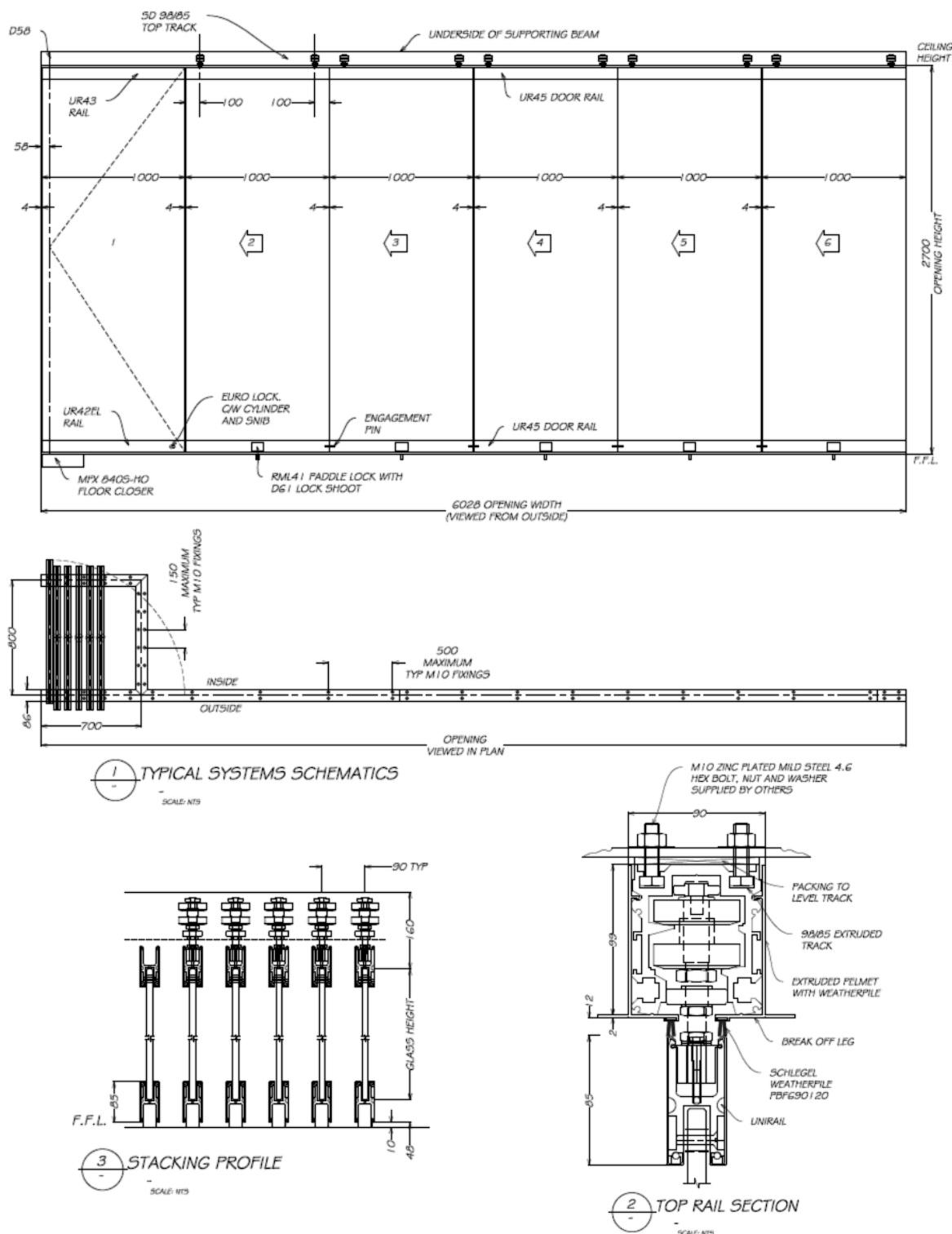
**Calculation of glass dimensions:**

Glass height = Door height - 170 mm

Glass width = sliding door width - 4 mm (or -7 mm for sliding fixed leaves)

## FRAMELESS GLASS STACKING DOOR SYSTEMS

## Austvision Slydstak (Rail)



## DETAILS

## Austvision Slydstak Doors with Rails

- For heavy duty commercial applications up to 3m maximum opening height
- A maximum of 15mm toughened, heat soaked glass can be supported
- Austvision frameless door systems feature innovative dual nylon wheels in the roller carriages for better weight distribution and stability.
- **Email [luke.pritchard@mfgs.com.au](mailto:luke.pritchard@mfgs.com.au) to order or discuss your requirements**
- For further information please refer to download section at [www.mfgs.com.au](http://www.mfgs.com.au)

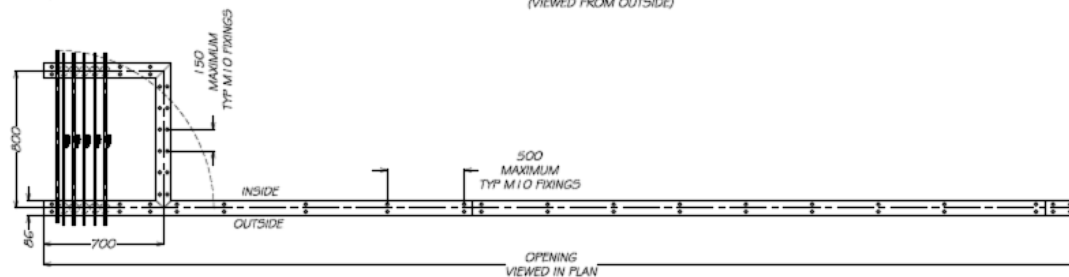
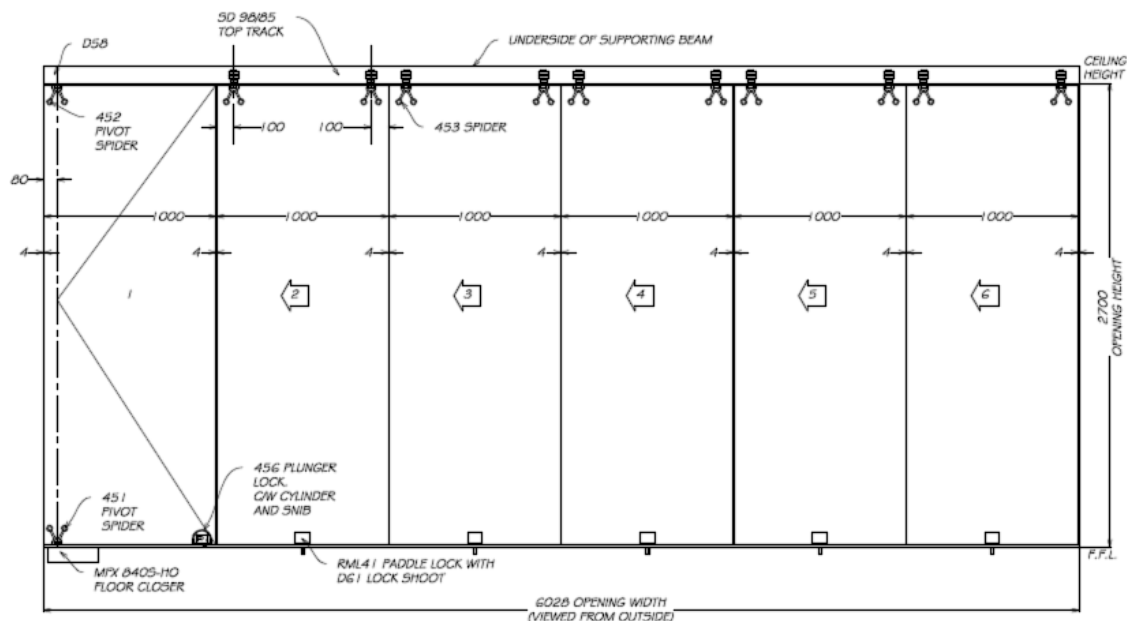
## FINISHES

- Natural Anodised
- Polished
- Satin

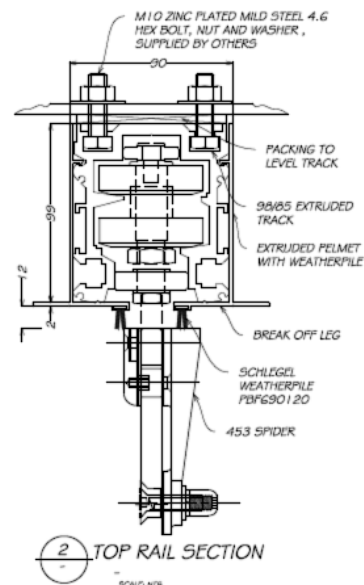
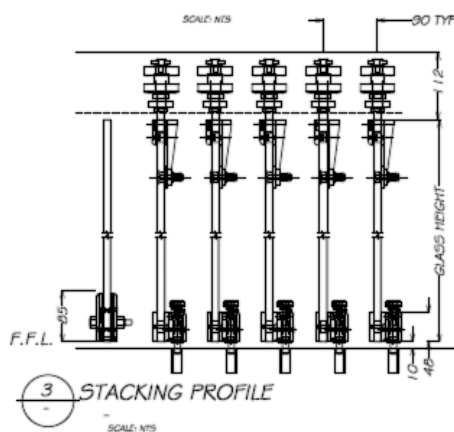
Base material:  
Stainless Steel Door Rail Covers  
Aluminium Top Track & Door Rail Bodies

Austvision  
Slydstak (Spider)

## FRAMELESS GLASS STACKING DOOR SYSTEMS



1 TYPICAL SYSTEMS SCHEMATICS  
SCALE: NTS



## DETAILS

## Austvision Slydstak Doors with Spiders

- For heavy duty commercial applications up to 3m maximum opening height
- A maximum of 15mm toughened, heat soaked glass can be supported
- Austvision frameless door systems feature innovative dual nylon wheels in the roller carriages for better weight distribution and stability.
- For further information please refer to download section at [www.mfgs.com.au](http://www.mfgs.com.au)
- Email [luke.pritchard@mfgs.com.au](mailto:luke.pritchard@mfgs.com.au) to order or discuss your requirements

## FINISHES

- Natural Anodised Top Track
- Polished Stainless Spiders & Locks
- Satin Stainless Spiders & Locks

Base material:  
Stainless Steel Spiders & Locks  
Aluminium Top Track