

## FRAMELESS GLASS CANOPY HARDWARE INDEX

- 7.1 Austvision Canopy Hardware Kits & Parts**
- 7.2 Austvision Heavyweight Spider Canopy**
- 7.3 Austvision Lightweight Spider Canopy**

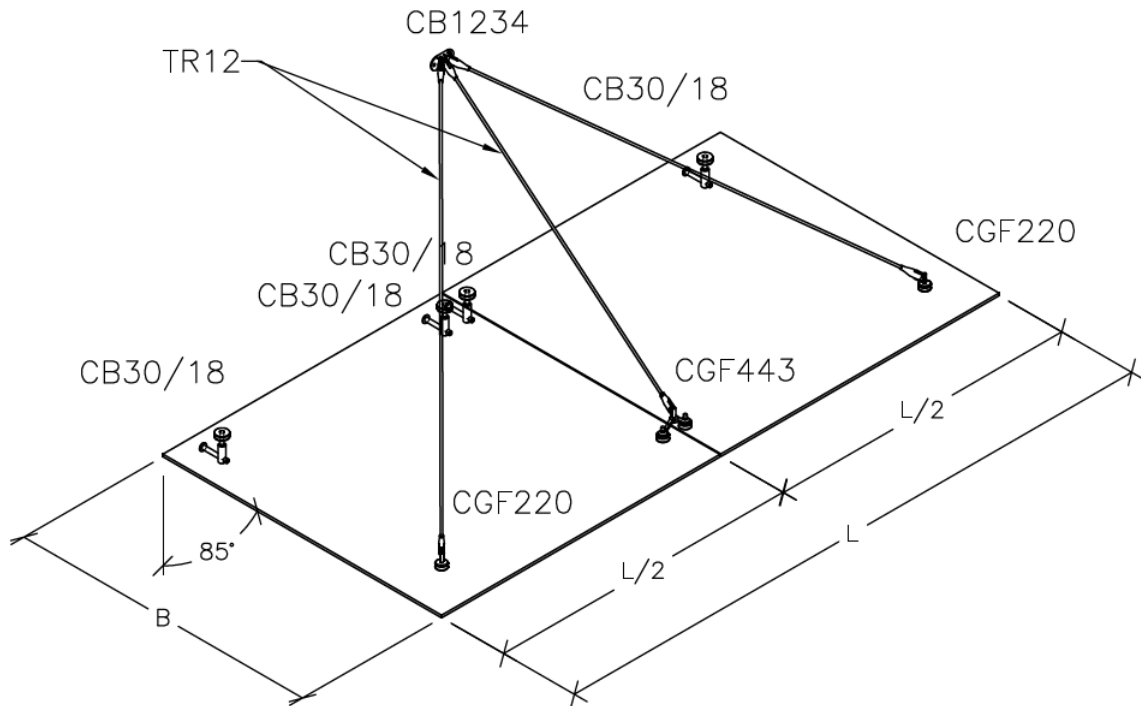
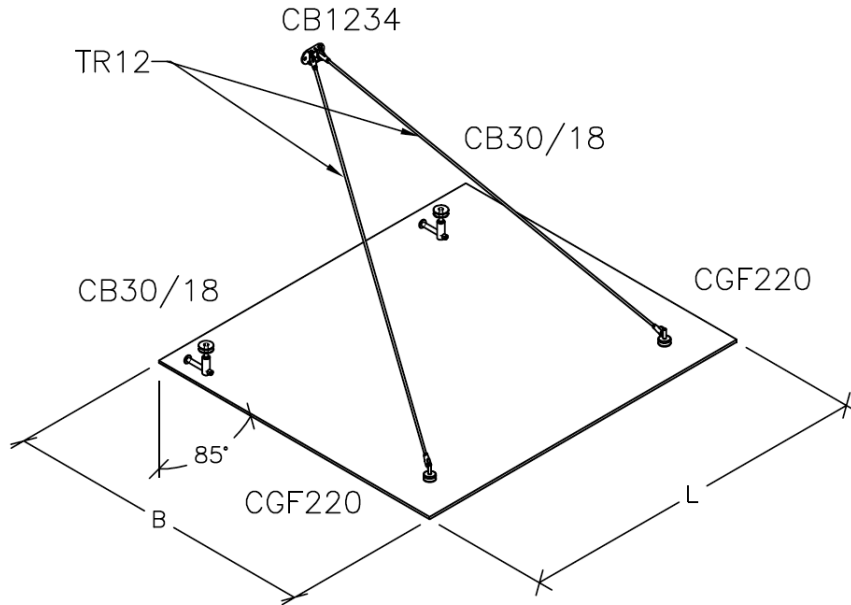
**INTENTIONALLY**

**LEFT**

**BLANK**

**FRAMELESS GLASS CANOPY HARDWARE**

**C1-10/12  
C2-10/12**



**DETAILS**

Austvision Frameless Glass Canopy Hardware Kits

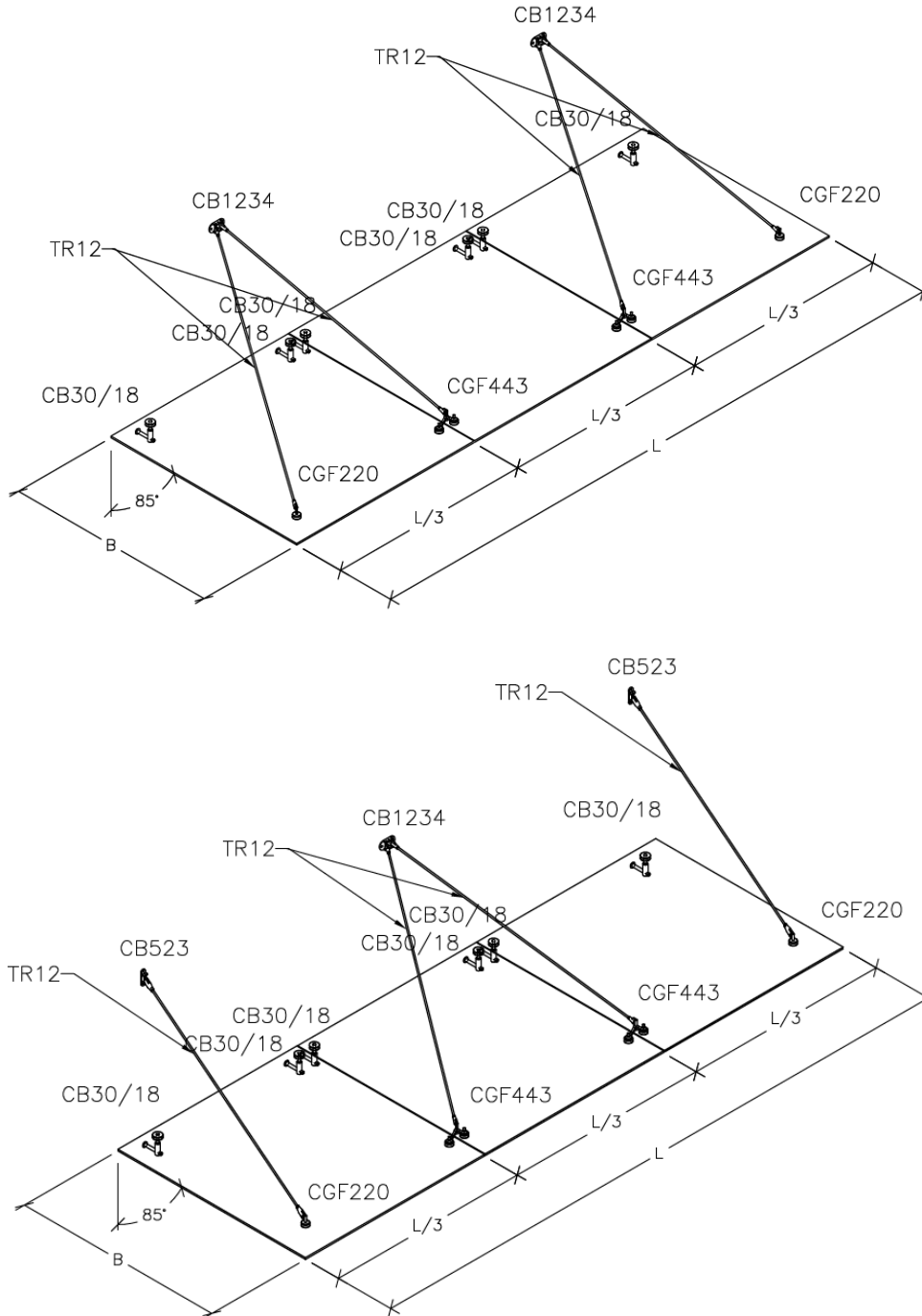
- Suitable for 10/12mm toughened glass (not included with kit)
- C1-10 (L= 1500mm & B = 1400mm) for 10mm glass
- C1-12 (L = 1700mm & B = 1600mm) for 12mm glass
- C2-10 (L = 2600mm & 1400mm) for 10mm glass
- C2-12 (L = 3000mm & 1600mm) for 12mm glass
- [Email luke.pritchard@mfgs.com.au](mailto:luke.pritchard@mfgs.com.au) to order or discuss your requirements

**FINISHES**

- Satin
- Base material: 316 Stainless Steel

C3-10/12  
C4-10/12

FRAMELESS GLASS CANOPY HARDWARE



DETAILS

Austvision Frameless Glass Canopy Hardware Kits

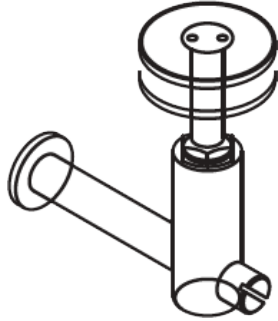
- Suitable for 10/12mm toughened glass (not included with kit)
- C3-10 (L= 3700mm & B = 1400mm) for 10mm glass
- C3-12 (L = 4300mm & B = 1600mm) for 12mm glass
- C4-10 (L = 3700mm & 1400mm) for 10mm glass
- C4-12 (L = 4300mm & 1600mm) for 12mm glass
- Email [luke.pritchard@mfgs.com.au](mailto:luke.pritchard@mfgs.com.au) to order or discuss your requirements

FINISHES

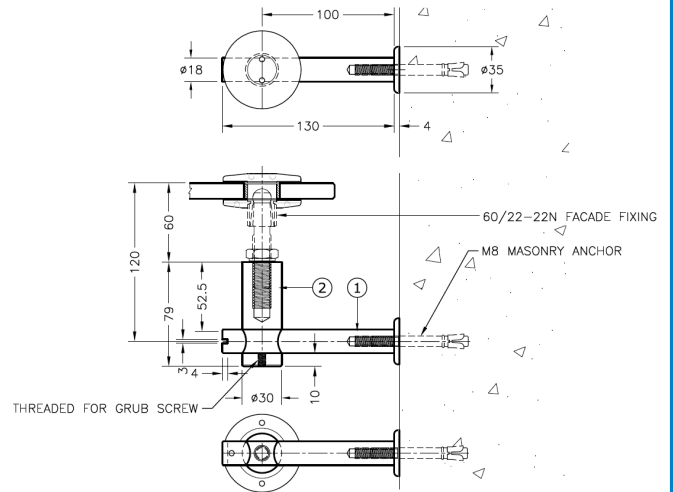
- Satin
- Base material: 316 Stainless Steel

FRAMELESS GLASS CANOPY HARDWARE

CB30-18



Product Image



Dimensions

DETAILS

One Way Glass to Wall Bracket

- Suitable for 10/12mm toughened glass & TR12 tie rods
- Ø27mm Hole required in glass
- Email [luke.pritchard@mfgs.com.au](mailto:luke.pritchard@mfgs.com.au) to order or discuss your requirements

FINISHES

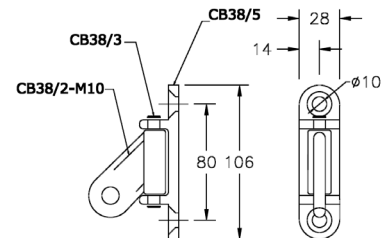
- Satin
- Base material: 316 Stainless Steel

FRAMELESS GLASS CANOPY HARDWARE

CB523



Product Image



Dimensions

DETAILS


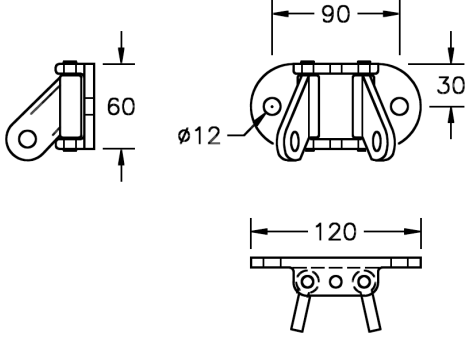
One Way Wall to Tie Rod Bracket

- Suitable for TR12 tie rods
- Email [luke.pritchard@mfgs.com.au](mailto:luke.pritchard@mfgs.com.au) to order or discuss your requirements

FINISHES


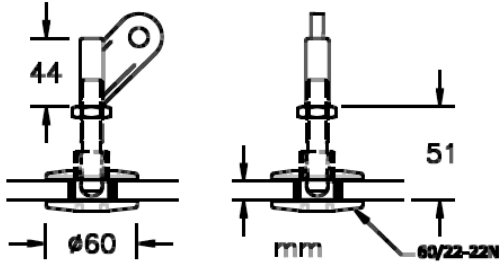
- Satin
- Base material: 316 Stainless Steel

<b>CB1234</b>	<b>FRAMELESS GLASS CANOPY HARDWARE</b>
---------------	--

	
Product Image	Dimensions

<b>DETAILS</b>	<b>FINISHES</b>
<p><u>Two Way Wall to Tie Rod Bracket</u></p> <ul style="list-style-type: none"> <li>Suitable for TR12 tie rods</li> <li>Email <a href="mailto:luke.pritchard@mfgs.com.au">luke.pritchard@mfgs.com.au</a> to order or discuss your requirements</li> </ul>	<ul style="list-style-type: none"> <li>Satin</li> </ul> <p>Base material: 316 Stainless Steel</p>

<b>CGF220</b>	<b>FRAMELESS GLASS CANOPY HARDWARE</b>
---------------	--

	
Product Image	Dimensions

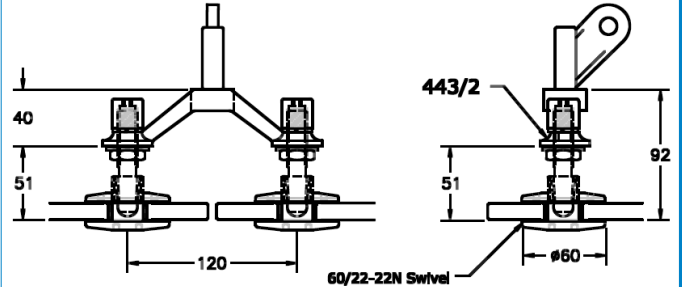
<b>DETAILS</b>	<b>FINISHES</b>
<p><u>One Way Tie Rod to Glass Bracket</u></p> <ul style="list-style-type: none"> <li>Suitable for 10/12mm toughened glass &amp; TR12 tie rods</li> <li>Ø27mm Hole required in glass</li> <li>Email <a href="mailto:luke.pritchard@mfgs.com.au">luke.pritchard@mfgs.com.au</a> to order or discuss your requirements</li> </ul>	<ul style="list-style-type: none"> <li>Satin</li> </ul> <p>Base material: 316 Stainless Steel</p>

FRAMELESS GLASS CANOPY HARDWARE

CGF443



Product Image



Dimensions

DETAILS

Two Way Tie Rod to Glass Bracket

- Suitable for 10/12mm toughened glass & TR12 tie rods
- Ø27mm Hole required in glass
- Email [luke.pritchard@mfgs.com.au](mailto:luke.pritchard@mfgs.com.au) to order or discuss your requirements

FINISHES

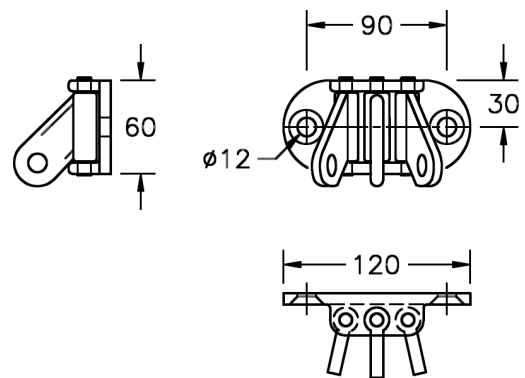
- Satin
- Base material: 316 Stainless Steel

FRAMELESS GLASS CANOPY HARDWARE

CB1235



Product Image



Dimensions

DETAILS

Three Way Wall to Tie Rod Bracket

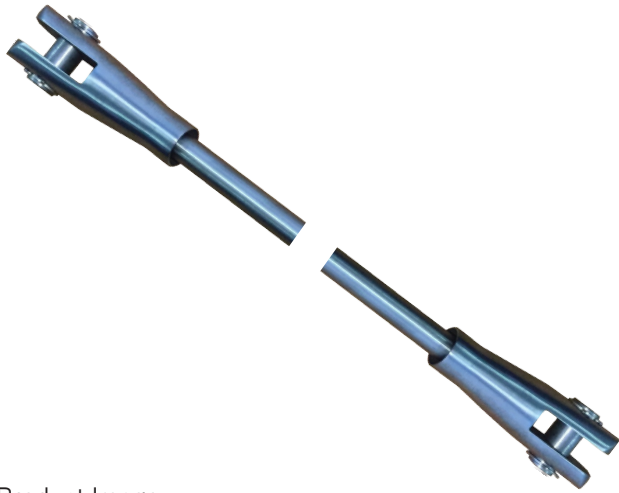
- Suitable for TR12 Tie Rods
- Email [luke.pritchard@mfgs.com.au](mailto:luke.pritchard@mfgs.com.au) to order or discuss your requirements

FINISHES

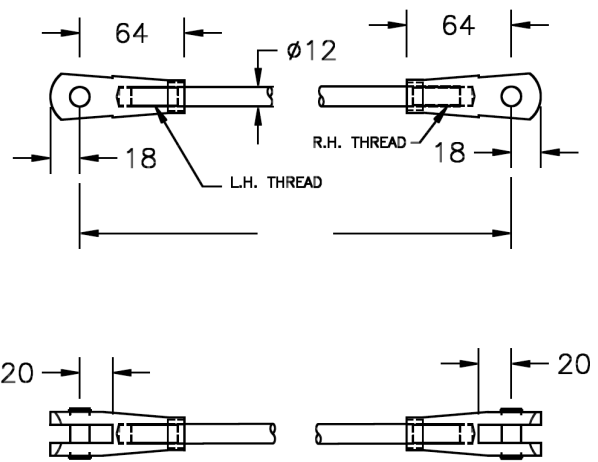
- Satin
- Base material: 316 Stainless Steel

TR12

## FRAMELESS GLASS CANOPY HARDWARE



Product Image



Dimensions

## DETAILS

Tie Rod with Forks

- Suitable for CB1235, CGF443, CGF220, CB1234 & CB523
- [Email luke.pritchard@mfgs.com.au](mailto:luke.pritchard@mfgs.com.au) to order or discuss your requirements

## FINISHES

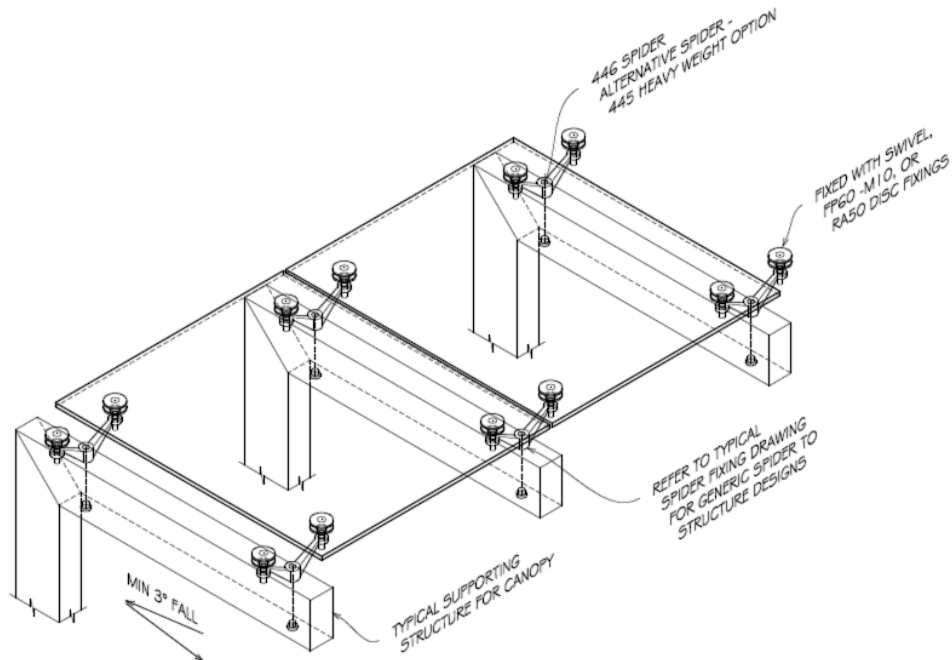
- Satin

Base material: 316 Stainless Steel

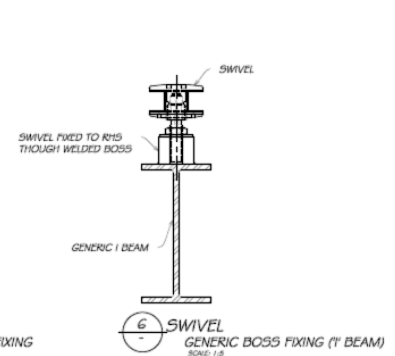
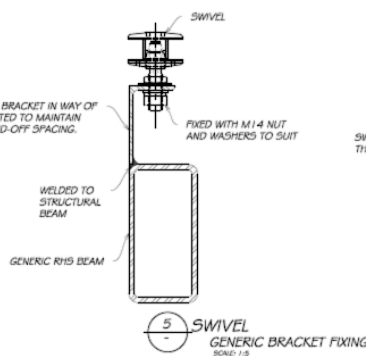
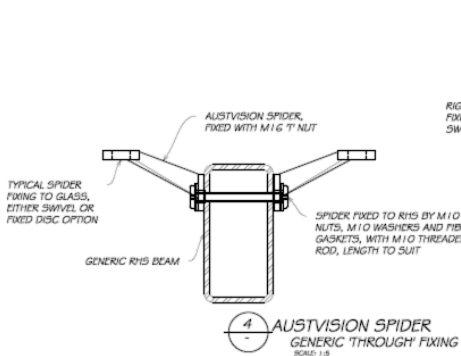
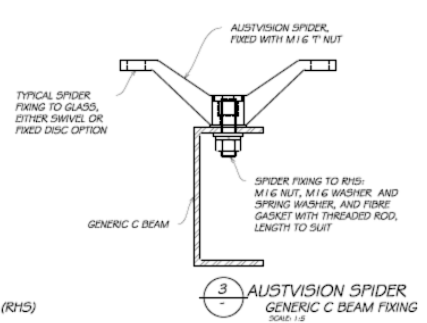
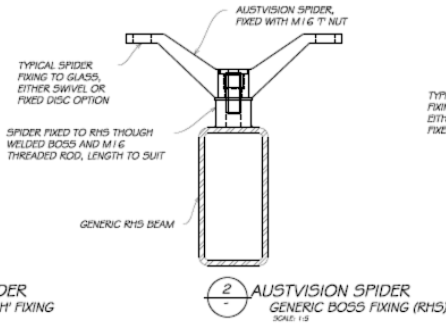
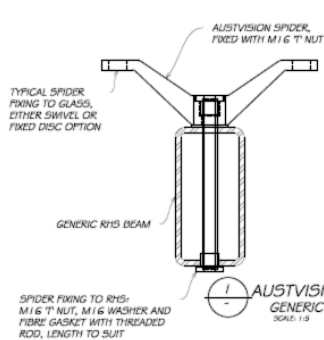


FRAMELESS GLASS CANOPY HARDWARE

Heavyweight  
Spider Canopy



1 TYPICAL CANOPY COMPONENTS  
CANOPY DESIGN ILLUSTRATION ONLY  
SCALE: 1:1.5



DETAILS

Austvision Frameless Glass Heavyweight Spider Canopy

- Suitable for 10 to 19mm toughened glass & 11.5 to 22mm toughened laminated
- 445 or 446 series – four or two way heavy duty spider fittings
- Glass fixings - M10 CSK Disc or 60/22-22n swivel disc to suit the application
- Email [luke.pritchard@mfgs.com.au](mailto:luke.pritchard@mfgs.com.au) to order or discuss your requirements

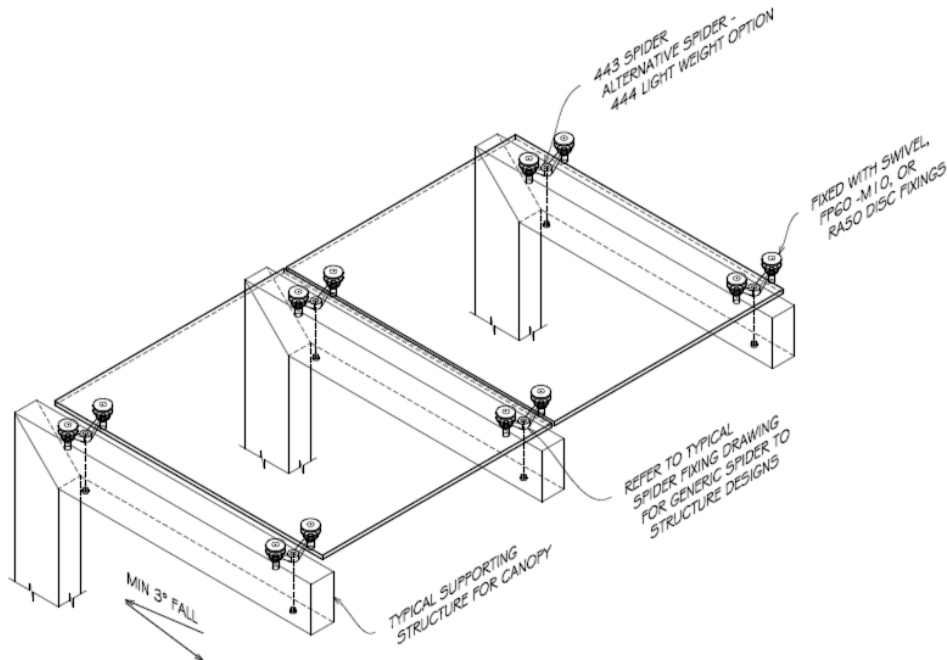
FINISHES

- Polished
- Satin

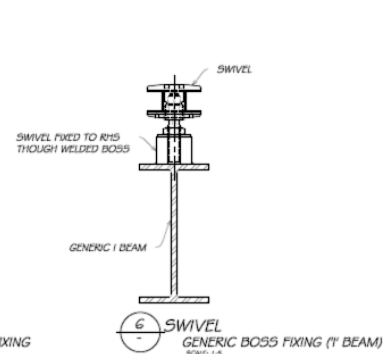
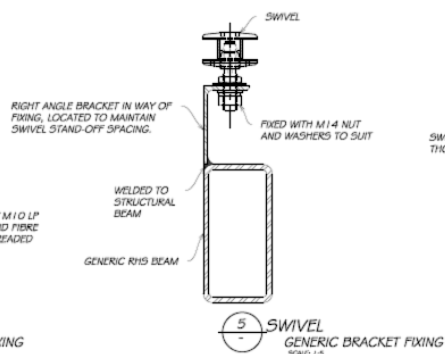
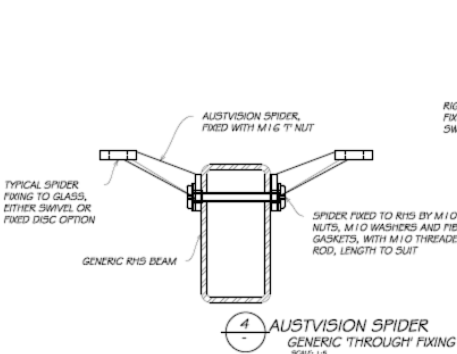
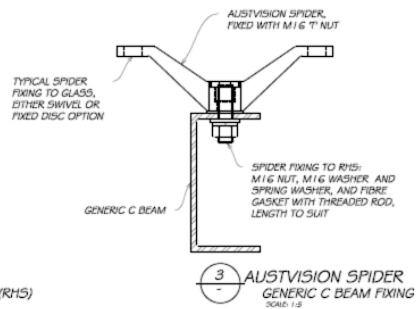
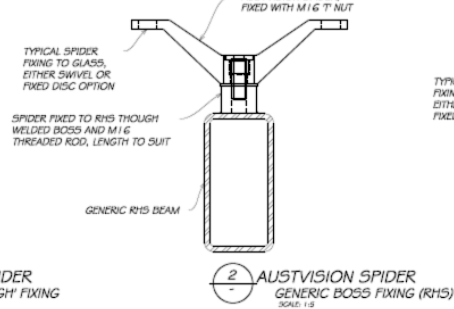
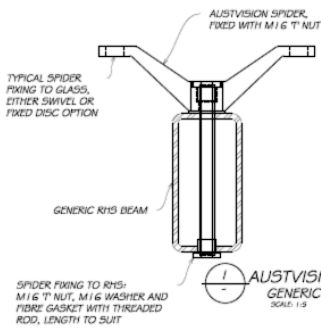
Base material: 316 Stainless Steel

Lightweight  
Spider Canopy

FRAMELESS GLASS CANOPY HARDWARE



1 TYPICAL CANOPY COMPONENTS  
CANOPY DESIGN ILLUSTRATION ONLY  
SCALE: 1:1.5



DETAILS

- Austvision Frameless Glass Lightweight Spider Canopy**
- Suitable for 10 to 19mm toughened glass & 11.5 to 22mm toughened laminated
  - 443 or 444 series – four or two way light duty spider fittings
  - Generic drawings above show M16 fixing methods for 445 & 446 series spiders, M10 fixings are used for 443 & 444 series spiders.
  - Glass fixings - M10 CSK Disc or 60/22-22n swivel disc to suit the application
  - Email [luke.pritchard@mfgs.com.au](mailto:luke.pritchard@mfgs.com.au) to order or discuss your requirements

FINISHES

- Polished
  - Satin
- Base material: 316 Stainless Steel